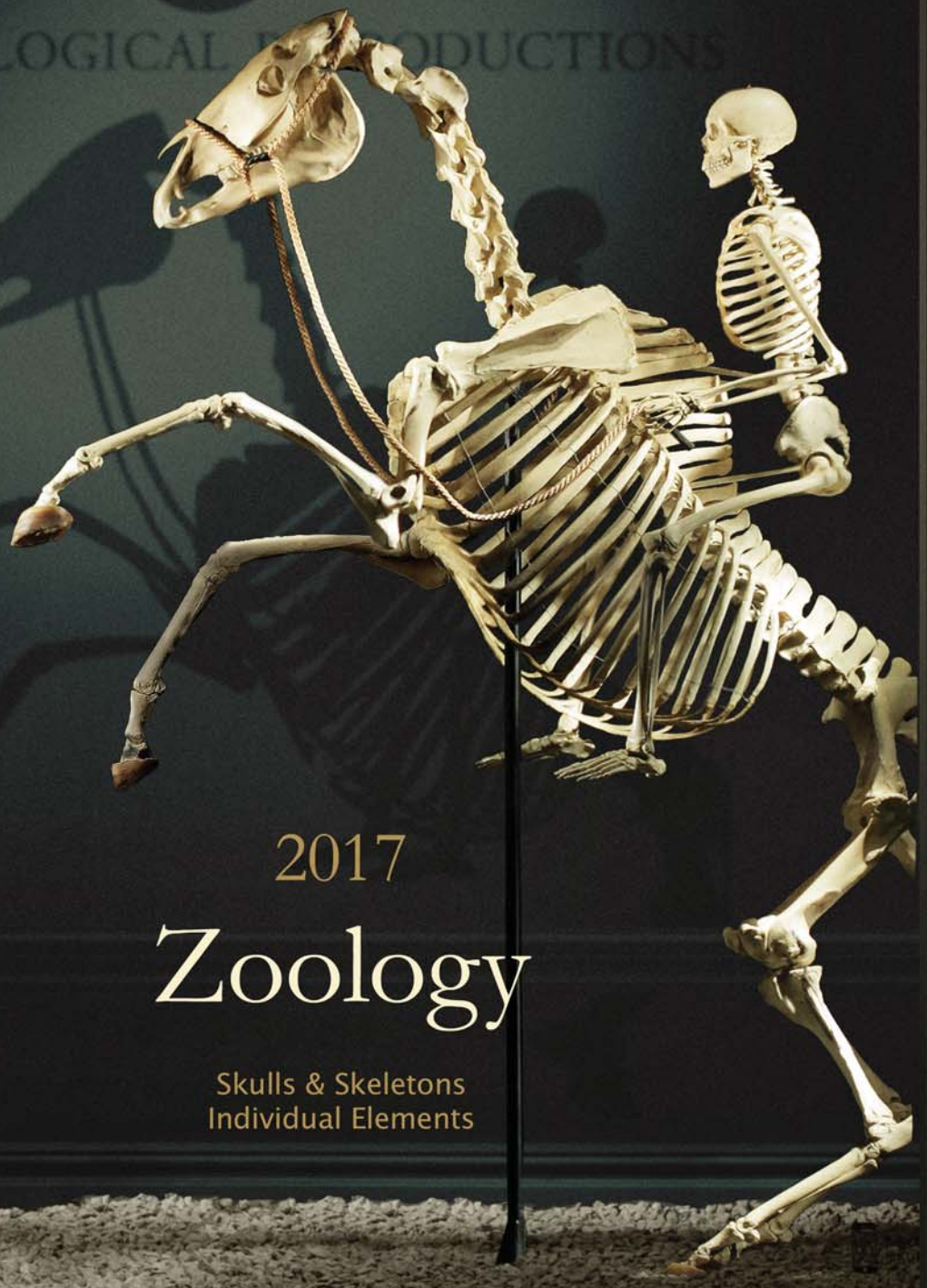


# Bone Clones®

OSTEOLOGICAL REPRODUCTIONS



2017

## Zoology

Horse  
*Equus caballus*

Human  
*Homo sapiens*

Skulls & Skeletons  
Individual Elements



BIOLOGY · ZOOLOGY · ORNITHOLOGY · HERPETOLOGY

BIO

BONE CLONES  
INCORPORATED  
OSTEOLOGICAL  REPRODUCTIONS

**T**his catalog represents the zoological portion of our product line, which includes extinct and extant animals.

An impressive collection of skulls and skeletons, as well as talons, horns, teeth, eggs, a variety of great and lesser apes, modern and fossil cats, bears, birds, sharks, reptiles, and marine mammals .... and more are within these pages. Expertly reproduced from the best originals available, Bone Clones® are hand-made from start to finish ... widely used in numerous educational settings from science centers to institutions of higher and lower education, zoos, nature centers and museum exhibits.

A fact that surprises, is that Bone Clones had an online store in 1995 – at the very beginning of the internet and e-commerce. It helped spread the word about our unique product line for many years. In 2015 we launched a new and improved website which showcases each item for sale on its own page. Using the group page tab you will find lists of postcranial parts for each skeleton we offer. Customers love our new site and we hope you will visit [www.boneclones.com](http://www.boneclones.com).



**Bone Clones®**  
Co-Founder, Dave Kronen





# ZOOLOGICAL PRODUCTS 2017



All Bone Clones® products in this catalog are produced and handmade by Bone Clones, Inc. in the USA and are protected under State, Federal and International trademark laws. Photographs, text, descriptions or casts cannot be reproduced without the written consent of Bone Clones, Inc. Please note that prices are subject to change without notice.

## TABLE OF CONTENTS

- Ordering ..... D
- Birds, Eggs & Claws ..... 2-13
- Primates ..... 14-22
- Pathology ..... 23
- Cats..... 24-25
- Dogs & Bears..... 26-27
- Giraffe ..... 28
- Warthog,  
Babirusa, Okapi ..... 29
- Horse ..... 30
- Old & New  
World Mammals ..... 31-39
- Economy Series ..... 36-37
- Marine  
Mammals ..... 40-44
- Sharks & Fish ..... 45-47
- Reptiles &  
Amphibians ..... 48-51
- Fossils ..... 52-65
- Sculpture ..... 66
- Index ..... 67-69

### About Our Cover

Shot on location in New York City, August 2015. Bone Clones® skulls and skeletons were featured in the famous Bergdorf Goodman windows on 5th Avenue. David Hoey, consummate window dresser and Senior Visual Director at Bergdorf, inspired by our unique animal replicas, created an exquisite display that combined Natural History and High Fashion. We photographed our debut on New York's historic Avenue and created our own version of 'natural history' display windows for our covers.

**B**

Bone Clones Osteological Reproductions



TABLE OF CONTENTS

**1-800-914-0091**



# AVAILABLE SKELETONS

Available Articulated and Disarticulated, see Website

- BALD EAGLE
- BLACK-FOOTED ALBATROSS
- BLACK SPIDER MONKEY
- BONOBO
- BROWN KIWI
- CHIMPANZEE
- DOLPHIN
- ELEPHANT BIRD
- FLYING LEMUR
- FOSSIL DUGONG
- GOLDEN EAGLE
- GOLIATH FROG
- GORILLA
- GREATER FLYING FOX
- HARPY EAGLE
- HORSE
- INDRI LEMUR
- KOMODO DRAGON
- MANATEE
- MANDRILL BABOON
- ODONTOPTERYX GIGAS
- ORANGUTAN
- PLATYPUS
- RAVEN
- RHESUS MACAQUE
- SHORT-FACED BEAR
- SIAMANG
- SMILODON, SABERTOOTH CAT
- VERVET MONKEY
- WEeping CAPUCHIN
- XENOSMILUS, SABERTOOTH CAT



**Black-footed Albatross Skeleton**  
see page 3



**Goliath Frog Skeleton**  
see page 49

**Gorilla Skeleton**  
see page 14



[www.boneclones.com](http://www.boneclones.com)



Bone Clones Osteological Reproductions

SKELETONS

C

Order on our website: [www.boneclones.com](http://www.boneclones.com)  
 Order by phone: 818-709-7991 or 800-914-0091 (USA customers only)  
 Order by Fax: 818-709-7993 Order by e-mail: [order@boneclones.com](mailto:order@boneclones.com)  
 Order by mail: Bone Clones, Inc. • 21416 Chase Street #1  
 Canoga Park, CA 91304 • U.S.A.



**Payment:**



We accept Visa, Mastercard, American Express and Discover. Checks or money orders can be mailed to us, made payable to Bone Clones. Allow 10 days for personal checks to clear. Sorry, we do not ship COD.

Educational institutions can fax, mail or e-mail us your Purchase Order.

**Shipping:**

Your address: Please provide us with your shipping and billing address (if different), email, and a daytime phone number.

Our preferred shipping method is to a street address. If you have special shipping needs, please advise us.


Specify: Item #, description, quantity and price. Add shipping charges, per chart below. California residents, add Sales Tax.

Domestic Ground Charges: (Additional charges apply to Hawaii and Alaska)			
Up to \$50 .....	\$10.50	\$201 to \$250.....	\$21.00
\$51 to \$100.....	\$12.50	\$251 to \$300.....	\$25.00
\$101 to \$150.....	\$17.75	\$301 to \$400.....	\$29.00
\$151 to \$200.....	\$18.75	Over \$400.....	7% of order

We will be happy to quote you shipping charges for items that require special crating and shipping.

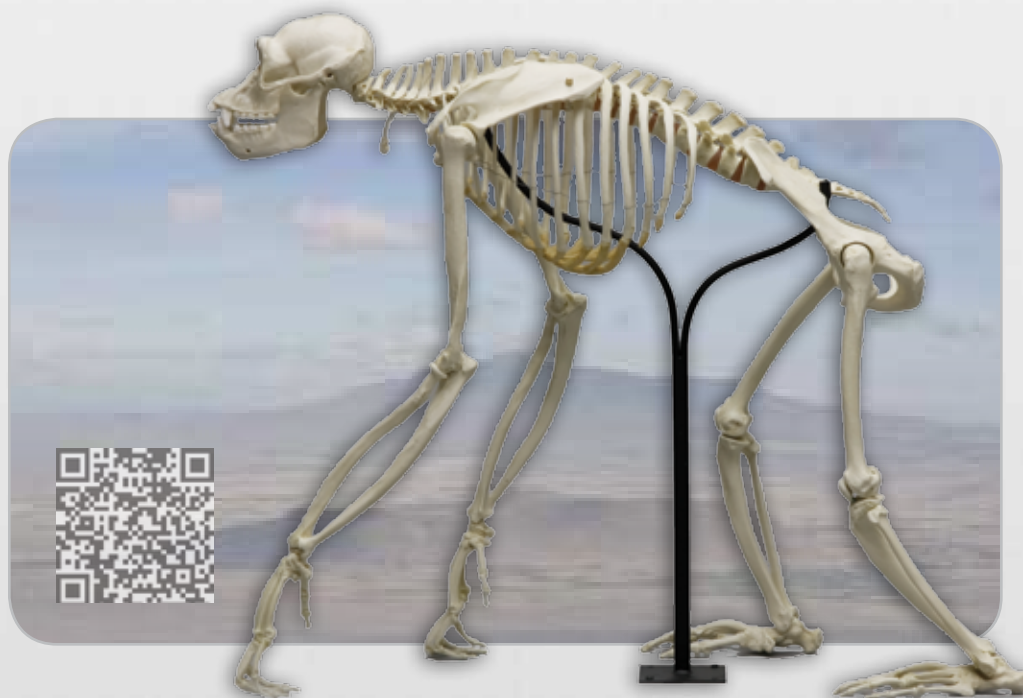
Rush orders: For expedited 2 day air service add \$20.00 to above charges. For next day air service add \$38.00.

International Orders: Shipping charges depend on size, weight and the level of service. We will quote you the shipping and handling charges. Please note that there may be additional charges in the recipient country such as customs duties, VAT taxes, etc., which are the responsibility of the recipient. Our commercial invoice indicates that Bone Clones® are educational products and in some instances, this can impact the charges favorably.

<b>D</b>	Bone Clones Osteological Reproductions 
	<b>ORDERING</b>

**1-800-914-0091**





# CHIMPANZEE

...our closest extant relative. Chimps and bonobos share 98.8% of their DNA with humans, more than any other living species. To study and compare the expression of genes in osteological material we have an extensive collection of chimpanzee and bonobo specimens which may be of interest to the zoology, primatology, and anthropology communities, including skulls, full and partial skeletons, comparative sets and individual postcranial parts. Additionally we offer life casts, endocast, brain, scale and sculpture examples. All in all, we make over 120 chimp and bonobo products combined, a selection of which can be seen in this catalog. For additional products please visit our website.

As an example: we offer 6 full-sized (1:1 scale) chimpanzee skulls, including: Fetal, Infant, Juvenile, Adult Male, Adult Female, and Adult Male with Calvarium Cut. These specimens offer the ability to compare differences in age and sex in *Pan troglodytes*.



[www.boneclones.com](http://www.boneclones.com)



Bone Clones Osteological Reproductions

CHIMPANZEE

E

# BIRDS

(ORNITHOLOGY)

SKULLS, SKELETONS & ELEMENTS



**Harpy Eagle  
Skeleton, Articulated**  
*Harpia harpyja*  
(Stand Included)  
21" L, 40" W, 41" H  
SC-043-A.....\$1,790.00

**Harpy Eagle  
Skeleton, Disarticulated**  
SC-043-D.....\$1,300.00

**Harpy Eagle Leg**  
see page 10

**Harpy Eagle Skull**  
see page 7



**Bald Eagle Skeleton,  
Articulated**  
*Haliaeetus leucocephalus*  
(Stand Included)  
14" L, 12" W, 31" H  
SC-068-A..... \$1950.00

**Bald Eagle Skeleton,  
Disarticulated**  
SC-068-D.... \$1550.00

**Bald Eagle Skull**  
see page 6







**Black-footed Albatross  
Skeleton, Articulated**  
*Phoebastria nigripes*  
(Stand Included)  
78" Wingspan, 31" L, 20 1/2" H  
**SC-332-A.....\$1,725.00**

**Black-footed Albatross  
Skeleton, Disarticulated**  
**SC-332-D.....\$1,275.00**

**Black-footed Albatross Skull**  
see page 8



**Golden Eagle  
Skeleton, Articulated**  
*Aquila chrysaetos*  
(Stand Included)  
66" Wingspan, 27" L, 24" H  
**SC-073-A.....\$1950.00**

**Golden Eagle  
Skeleton, Disarticulated**  
**SC-073-D.....\$1550.00**

**Golden Eagle Skull**  
see page 6





**Flamingo Skull and Neck**  
*Phoenicopterus ruber*  
 (Base Included)  
 23 1/2" H  
**BC-306-N.....\$325.00**



**Cassowary Skull**  
*Casuarius casuarius*  
 7 1/2" L, 2 3/4" W, 5" H  
**BC-338 .....\$190.00**



**Brown Kiwi Skeleton and Egg, Articulated**  
*Apteryx australis*  
 (Stand and Base Included)  
 19" L, 7 1/2" W, 14" H  
**SC-165-A.....\$995.00**

**Brown Kiwi Skull**  
 8" L, 1 1/2" W, 1 1/2" H  
**BC-165 .....\$155.00**

**Brown Kiwi Egg**  
 5" L, 3" W  
**KO-182 .....\$38.00**



**Flamingo Skull**  
 6 1/4" L, 1 1/2" W, 2 3/4" H  
**BC-306 .....\$150.00**



**Oval Display Bases** (Skulls Not Included)  
 These black resin bases (available in 3 sizes) are perfect for showcasing Bone Clones® skulls.  
**Small** 2 1/2" L, 5" W: **OB-01 .....\$14.00**  
**Medium** 3 1/2" L, 6 1/2" W: **OB-02 .....\$16.00**  
**Large** 5" L, 9" W: **OB-03.....\$23.00**



**Raven Skeleton, Articulated**  
 (Base Included)  
 23" L x 12 1/2" H  
 SC-074-A..... \$1,450.00

The raven is generally regarded as the world's most clever bird. It is the largest of the birds in the crow family with a wingspan significantly larger than that of the crow (4 feet as opposed to 2 1/2 feet). It can also be distinguished from crows by its longer, thicker beak (which is more curved than the crow's), longer, thinner wings, and wedge-shaped tail.

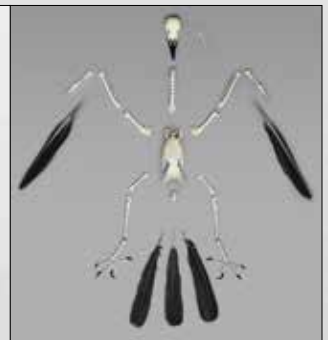


**Raven Egg** (Stand Included)  
 2" H x 1 1/4" W  
 KO-440..... \$24.00

**Raven Skeleton, Disarticulated**  
 SC-074-D..... \$920.00

**Raven Talon**  
 1 3/4" L  
 KO-023..... \$10.00

**Raven Skull**  
 4 1/2" L, 1 3/4" W, 1 1/2" H  
 BC-074..... \$128.00



**Raven Skeleton, Articulated, Flying Position**  
*Corvus corax*  
 (Base Included)  
 48" Wingspan  
 SC-074-AF ..... \$1,450.00



## About Birds Of Prey

Birds of prey use their beaks and talons to capture other birds, small mammals and reptiles. Some, like hawks, eagles, and falcons are diurnal, while others, like owls, are nocturnal. These Bone Clones® are perfect replicas of several examples of these birds, and along with the talons and/or eggs of the same species, make an excellent instructional aid. See page 11 for additional eggs.



**Peregrine Falcon Set**  
*Falco peregrinus*  
Skull, Egg and Talon  
**BC-096-SET .....\$176.00**

**Peregrine Falcon Skull**  
The fastest animal on earth, they can achieve speeds up to 200 miles per hour.  
4" L, 1 3/4" W, 1 1/2" H  
**BC-096 .....\$142.00**



**Red-tailed Hawk Set**  
*Buteo jamaicensis*  
Skull, Egg and Talon  
**BC-078-SET .....\$164.00**

**Red-tailed Hawk Skull**  
Red-tailed hawks are the most common hawk in North America.  
3 1/2" L, 2" W, 1 1/2" H  
**BC-078 .....\$132.00**



**Barn Owl Set**  
*Tyto alba*  
Skull, Egg and Talon  
**BC-153-SET .....\$145.00**

**Barn Owl Skull**  
Barn owls have acute eyesight and hearing, and specialized feathers that allow for silent flight.  
3" L, 1 1/2" W, 1 1/2" H  
**BC-153 .....\$120.00**



**Bald Eagle Set**  
*Haliaeetus leucocephalus*  
Skull, Egg and Talon  
**BC-068-SET .....\$175.00**

**Bald Eagle Skull**  
Native to North America and our national symbol, its wingspan can reach over 7 feet.  
4 3/4" L, 2 1/2" W, 2" H  
**BC-068 .....\$140.00**



**Great Horned Owl Set**  
*Bubo virginianus*  
Skull, Egg and Talon  
**BC-072-SET .....\$145.00**

**Great Horned Owl Skull**  
The great horned owl is found throughout the Americas and is the largest of the owls.  
3 1/2" L, 2 1/2" W, 1 3/4" H  
**BC-072 .....\$120.00**



**Golden Eagle Set**  
*Aquila chrysaetos*  
Skull, Egg and Talon  
**BC-073-SET .....\$170.00**

**Golden Eagle Skull**  
This raptor can carry 8 pounds in flight.  
4 1/2" L, 2 1/2" W, 2" H  
**BC-073 .....\$135.00**

**1. Andean Condor**

*Vultur gryphus*  
6" L, 2 1/4" W, 2 1/2" H  
BC-297 ..... \$150.00

**2. Griffon Vulture**

*Gyps fulvus*  
5" L, 2" W, 2" H  
BC-337 ..... \$150.00

**3. Secretary Bird**

*Sagittarius serpentarius*  
4 1/2" L, 2 1/2" W, 2" H  
BC-254 ..... \$150.00

**4. Burrowing Owl**

*Athene cunicularia*  
1 3/4" L, 1 1/2" W, 1" H  
BC-155 ..... \$120.00

**5. Barred Owl**

*Strix varia*  
3" L, 2 1/4" W, 1 3/4" H  
BC-154 ..... \$128.00

**6. California Condor**

*Gymnogyps californianus*  
6" L, 2 1/4" W, 2 1/4" H  
BC-077 ..... \$150.00

**7. Harpy Eagle**

*Harpia harpyja*  
5" L, 2 3/4" W, 2 1/2" H  
BC-043 ..... \$165.00

**8. Osprey**

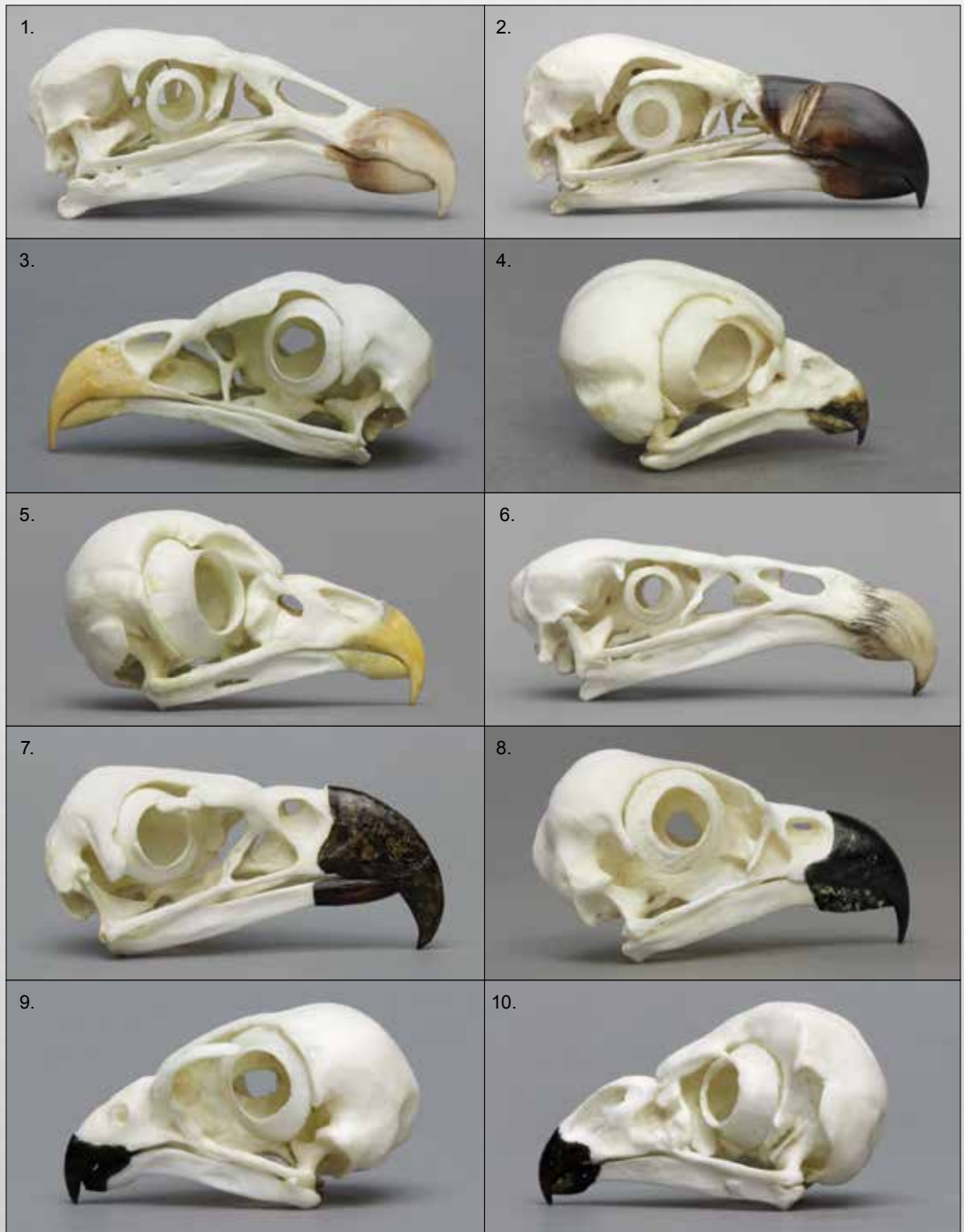
*Pandion haliaetus*  
3" L, 1 1/2" W, 1 1/2" H  
BC-166 ..... \$135.00

**9. American Kestrel**

*Falco sparverius*  
1 1/2" L, 1" W, 1" H  
BC-242 ..... \$130.00

**10. Short-eared Owl**

*Asio flammeus*  
2 1/2" L, 1 3/4" W, 1 1/2" H  
BC-245 ..... \$125.00



**Comparative Bird Skull Set of 3**  
(Red-tailed Hawk, Northern Cardinal, Ruby-throated Hummingbird)  
BC-330-BIRD-SET3 ..... \$249.00

**Comparative Bird Skull Set of 5**  
(Red-tailed Hawk, Crow, Pileated Woodpecker, Northern Cardinal, Ruby-throated Hummingbird)  
BC-331-BIRD-SET5 ..... \$459.00



Please Note—Most of our bird skulls have been updated to include sclerotic rings.



- 1. Hyacinth Macaw**  
*Anodorhynchus hyacinthinus*  
5" L, 2 1/2" W, 4" H  
BC-029 .....\$170.00
- 2. Scarlet Macaw**  
*Ara macao*  
3 1/2" L, 2 1/4" W, 3" H  
BC-310 .....\$165.00
- 3. Horned Puffin**  
*Fratercula corniculata*  
3 1/2" L, 1 1/2" W, 1 1/2" H  
BC-162 .....\$158.00



- 4. Black-footed Albatross**  
*Phoebastria nigripes*  
6 1/2" L, 2" W, 2" H  
BC-332 .....\$150.00



- 5. Black-browed Albatross**  
*Thalassarche melanophris*  
7 1/4" L, 2 1/4" W, 2 1/4" H  
BC-335 .....\$150.00



- 6. Wreathed Hornbill**  
*Aceros undulatus*  
6 3/4" L, 2" W, 2 3/4" H  
BC-174 .....\$180.00

- 7. Roseate Spoonbill**  
*Ajaia ajaja*  
7 1/2" L, 2" W, 1 1/2" H  
BC-177 .....\$150.00



- 8. Toco Toucan**  
*Ramphastos toco*  
8" L, 1 3/4" W, 2 1/2" H  
BC-173 .....\$180.00

- 9. Black Hornbill**  
*Anthracoceros malayanus*  
8 1/2" L, 2" W, 3 1/2" H  
BC-175 .....\$180.00

- 10. American White Pelican**  
*Pelecanus erythrorhynchos*  
16 1/2" L, 2 1/2" W, 2 1/2" H  
BC-065 .....\$160.00

**1. Scarlet Ibis**

*Eudocimus ruber*

7 1/2" L, 1" W, 1 1/2" H

**BC-176 .....\$150.00**

**2. Great Blue Heron**

*Ardea herodias*

8" L, 1 1/2" W, 1 1/2" H

**BC-161 .....\$158.00**

**3. Yellow-billed Cuckoo**

*Coccyzus americanus*

2"

**BC-169 .....\$92.00**

**4. Sandhill Crane**

*Grus canadensis*

8" L, 1 3/4" W, 2" H

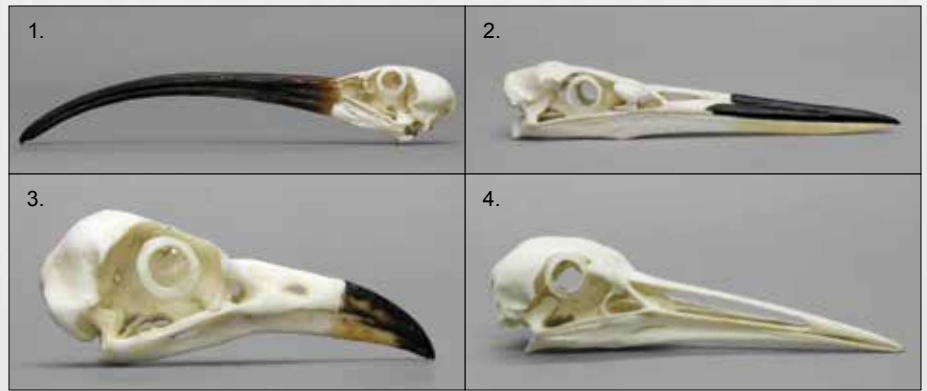
**BC-134 .....\$142.00**

**5. Sacred Ibis**

*Threskiornis aethiopicus*

8 1/2" L, 1 1/2" W, 1 1/2" H

**BC-192 .....\$150.00**



5.



**1. Common Snipe**

*Gallinago gallinago*

3 1/2" L, 3/4" W, 3/4" H

**BC-171 .....\$88.00**

**2. Blue Jay**

*Cyanocitta cristata*

2 1/4" L, 1" W, 1" H

**BC-170 .....\$92.00**

**3. American Robin**

*Turdus migratorius*

2" L, 3/4" W, 3/4" H

**BC-168 .....\$92.00**

**4. Northern Cardinal**

*Cardinalis cardinalis*

1 1/2" L, 3/4" W, 1" H

**BC-167 .....\$90.00**

**5. Yellow-billed Magpie**

*Pica nuttalli*

2 1/4" L, 1" W, 1" H

**BC-240 .....\$95.00**

**6. Raven**

*Corvus corax*

4 1/2" L, 1 3/4" W, 1 1/2" H

**BC-074 .....\$128.00**

**7. Crow**

*Corvus brachyrhynchos*

3 1/2" L, 1 1/2" W, 1 3/4" H

**BC-075 .....\$125.00**

**8. Pileated Woodpecker**

*Dryocopus pileatus*

3 3/4" L, 1" W, 1 1/4" H

**BC-112 .....\$122.00**

**9. Magellanic Penguin**

*Spheniscus magellanicus*

5" L, 2" W, 2" H

**BC-062 .....\$155.00**





**Ruby-throated Hummingbird Skull and Egg Set**  
*Archilochus colubris*  
 (Stand Included)  
**BC-151-SET ..... \$78.00**



**Ruby-throated Hummingbird Skull**  
 1" L, 1/2" W, 1/4" H  
**BC-151 ..... \$72.00**

**Egg (Stand Included)**  
 1/2" L, 1/4" W  
**KO-030 ..... \$16.00**

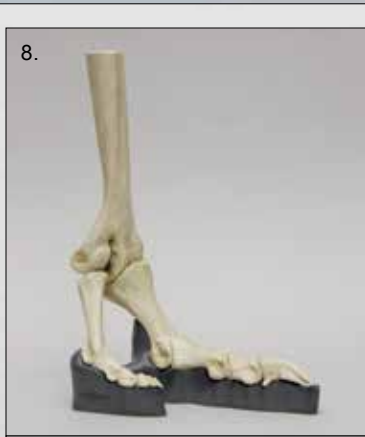
**1. Glaucous Gull**  
*Larus hyperboreus*  
 5 1/2" L, 2" W, 1 3/4" H  
**BC-244 ..... \$139.00**

**2. Kori Bustard**  
*Ardeotis kori*  
 8 1/2" L, 2 1/2" W, 2 1/2" H  
**BC-221 ..... \$150.00**

**3. Roadrunner Skull**  
*Geococcyx californianus*  
 3 1/2" L, 1" W, 1" H  
**BC-243 ..... \$124.00**

**4. Roadrunner Foot**  
 4 1/4" L  
**KO-113 ..... \$49.00**

**Roadrunner Skull and Foot Set**  
**BC-243-SET ..... \$159.00**



**5. California Condor Foot**  
*Gymnogyps californianus*  
 (stand included)  
 7 1/2" L x 4 3/4" W x 4 3/4" H on  
**KO-138 ..... \$140.00**

**6. Wattled Crane Leg (Life Cast)**  
*Bugeranus carunculatus*  
 4" W x 29" H  
**KO-134 ..... \$195.00**



**7. Wattled Crane Half-leg**  
 An excellent economical version of full crane leg, KO-134.  
 4" W x 12" H  
**KO-134-H ..... \$120.00**

**8. Ostrich Foot, Articulated**  
*Struthio camelus*  
 (stand included)  
 8" L, 4" W, 11 1/4" H  
**KO-203-B ..... \$149.00**

**9. Hyacinth Macaw Foot**  
*Anodorhynchus hyacinthinus*  
 3 3/4" H on 3" diameter base  
**KO-139 ..... \$140.00**

**10. Harpy Eagle Leg**  
*Harpia harpyja*  
 (stand included)  
 From our skeleton, SC-043.  
 9 1/2" L, 5 1/4" W, 17 1/4" H  
**KO-243 ..... \$180.00**





## North American Bird Egg Set

A set of 36 eggs, consisting of our product numbers KO-401 through KO-436. All eggs are shipped unmounted, each with its own display stand.  
**KO-400 .....\$809.00**



- KO-411 Golden Eagle** 2 1/4" W, 3" H.....**\$34.00**
- KO-417 Canada Goose** 2 1/4" W, 3 3/4" H.....**\$30.00**
- KO-405 Whooping Crane** 2 1/2" W, 3 3/4" H.....**\$36.00**
- KO-424 Common Loon** 2" W, 3 1/8" H.....**\$32.00**
- KO-410 Bald Eagle** 2 1/4" W, 3" H.....**\$34.00**
- KO-418 Red-tailed Hawk** 1 3/4" W, 2 1/4" H.....**\$29.00**
- KO-419 Great Blue Heron** 1 3/4" W, 2 1/2" H.....**\$25.00**
- KO-412 Great Egret** 1 3/4" W, 2 1/4" H.....**\$27.00**
- KO-435 Wild Eastern Turkey** 1 3/4" W, 2 5/8" H.....**\$34.00**
- KO-432 Osprey** 1 3/4" W, 2 3/8" H.....**\$36.00**
- KO-429 Great Horned Owl** 1 3/4" W, 2" H.....**\$25.00**
- KO-431 Snowy Owl** 1 5/8" W, 2" H.....**\$24.00**
- KO-413 Peregrine Falcon** 1 3/4" W, 2" H.....**\$32.00**
- KO-409 Mallard Duck** 1 1/2" W, 2 1/4" H.....**\$27.00**
- KO-428 Barn Owl** 1 5/16" W, 1 5/8" H.....**\$24.00**
- KO-408 Rock Dove** 1 1/4" W, 1 1/2" H.....**\$20.00**
- KO-406 American Crow** 1 1/4" W, 1 1/2" H.....**\$22.00**
- KO-430 Eastern Screech Owl** 1 1/4" W, 1 3/8" H.....**\$21.00**
- KO-422 American Kestrel** 1" W, 1 3/8" H.....**\$21.00**
- KO-423 Killdeer** 1" W, 1 3/8" H.....**\$22.00**
- KO-407 Mourning Dove** 3/4" W, 1 1/4" H.....**\$18.00**
- KO-434 Whip-poor-will** 3/4" W, 1" H.....**\$19.00**
- KO-420 Blue Jay** 3/4" W, 1" H.....**\$18.00**
- KO-415 Northern Flicker** 3/4" W, 1" H.....**\$22.00**
- KO-433 European Starling** 3/4" W, 1" H.....**\$19.00**
- KO-402 Northern Cardinal** 3/4" W, 1" H.....**\$18.00**
- KO-425 Western Meadowlark** 3/4" W, 1" H.....**\$18.00**
- KO-427 American Robin** 3/4" W, 1" H.....**\$19.00**
- KO-421 Western Scrub-Jay** 3/4" W, 1" H.....**\$18.00**
- KO-401 Eastern Bluebird** 3/4" W, 1" H.....**\$18.00**
- KO-426 Northern Mockingbird** 3/4" W, 1" H.....**\$19.00**
- KO-404 Brown Headed Cowbird** 3/4" W, 1" H.....**\$20.00**
- KO-403 Gray Catbird** 3/4" W, 1" H.....**\$19.50**
- KO-414 House Finch** 1/2" W, 3/4" H.....**\$18.00**
- KO-436 House Wren** 1/2" W, 5/8" H.....**\$19.00**
- KO-416 American Goldfinch** 1/2" W, 3/4" H.....**\$18.00**



**Turkey Vulture**  
*Cathartes*  
*aura*  
 2" W, 2 3/4" H  
**KO-441.....\$32.00**

**Kori Bustard**  
*Ardeotis*  
*kori*  
 2 1/4" W, 3" H  
**KO-439.....\$36.00**

**King Penguin**  
*Aptenodytes*  
*patagonicus*  
 3 1/4" W, 4 1/4" H  
**KO-181.....\$39.00**

**Horned Puffin**  
*Fratercula*  
*corniculata*  
 1 5/8" W, 2 3/8" H  
**KO-438.....\$36.00**

**Marbled Murrelet**  
*Brachyramphus*  
*marmoratus*  
 1 3/4" W, 2 1/4" H  
**KO-437.....\$36.00**

**California Condor**  
*Gymnogyps*  
*californianus*  
 3 1/2" W, 4" H  
**KO-017.....\$45.00**



[www.boneclones.com](http://www.boneclones.com)



Bone Clones Osteological Reproductions

BIRD EGGS

11

## Bird Talons

1. **Peregrine Falcon** *Falco peregrinus* 1 ¼" KO-029..... **\$10.00**
2. **Bald Eagle** *Haliaeetus leucocephalus* 2 ½" KO-021..... **\$10.00**
3. **Great Horned Owl** *Bubo virginianus* 1 ½" KO-004..... **\$9.50**
4. **Red-tailed Hawk** *Buteo jamaicensis* 1 ¾" KO-022..... **\$10.00**
5. **Barn Owl** *Tyto alba* 1 ⅛" KO-065..... **\$7.00**
6. **Raven** *Corvus corax* 1 ¾" KO-023..... **\$10.00**
7. **Harpy Eagle** *Harpia harpyja* 4" KO-243C..... **\$11.00**
8. **Golden Eagle** *Aquila chrysaetos* 3" KO-020..... **\$11.50**



## Bear Claws

9. **Polar Bear** *Ursus maritimus* 3 ¾" KO-048..... **\$15.00**
10. **Black Bear** *Ursus americanus* 2 ¾" KO-049..... **\$14.50**
11. **Sloth Bear** *Melursus ursinus* 4 ¼" KO-062..... **\$16.00**
12. **Grizzly Bear** *Ursus arctos* 4 ½" KO-047..... **\$15.00**



## Misc. Claws

13. **Giant Anteater** *Myrmecophaga tridactyla* 6" KO-140..... **\$16.50**
14. **Porcupine** *Erethizon dorsatum* 1 ¼" KO-061..... **\$9.50**
15. **Coyote** *Canis latrans* 1" KO-070..... **\$9.50**
16. **Raccoon** *Procyon lotor* ½" KO-056..... **\$8.50**
17. **Wolf** *Canis lupus* 1 ½" KO-054..... **\$9.50**
18. **Two-toed Sloth** *Choloepus hoffmanni* 2 ½" KO-142..... **\$15.00**
19. **Komodo Dragon** *Varanus komodoensis* 2" KO-002..... **\$9.50**
20. **Alligator Snapping Turtle** *Macrochelys temminckii* 1 ½" KO-059..... **\$8.50**
21. **American Badger** *Taxidea taxus* 2 ½" KO-060..... **\$9.50**
22. **Gray Fox** *Urocyon cinereoargenteus* 1" KO-055..... **\$9.50**
23. **American Beaver** *Castor canadensis* 1 ¼" KO-057..... **\$9.50**



## Cat Claws

**1. Russian Lynx**  
*Lynx lynx* 1 1/2"  
KO-058 .....\$11.50

**2. Jaguar**  
*Panthera onca* 2"  
KO-072 .....\$14.95

**3. Siberian Tiger**  
*Panthera tigris* 2"  
KO-071 .....\$14.95

**4. Cheetah Dew**  
*Acinonyx jubatus* 1 3/4"  
KO-066 .....\$9.50

**5. Cheetah Front**  
*Acinonyx jubatus* 2"  
KO-069 .....\$9.50

**6. Cougar**  
*Puma concolor* 2 1/4"  
KO-053 .....\$14.50

**7. African Lion**  
*Panthera leo* 2 3/4"  
KO-050 .....\$16.00

**8. Bobcat**  
*Lynx rufus* 1 1/8"  
KO-052 .....\$9.00

**9. Canadian Lynx**  
*Lynx canadensis* 1 1/4"  
KO-051 .....\$10.00

**10. African Leopard**  
*Panthera pardus* 2"  
KO-068 .....\$9.50



**Bird Talons Set of 8**  
Aves  
Bird talons from previous page.  
Box 8 1/2" L, 6 1/2" W, 1" D  
KO-100-BIRDS..... \$110.00

**Cat Claws Set of 10**  
Felidae  
Cat claws listed above.  
Box 8 1/2" L, 6 1/2" W, 1" D  
KO-100-CATS ..... \$155.00

**Bear Claws Set of 4**  
Ursidae  
Bear claws from previous page.  
Box 8 1/2" L, 6 1/2" W, 1" D  
KO-100-BEARS ..... \$110.00

**Canid Claws Set of 4**  
Carnivora  
Wolf, fox, raccoon, and coyote.  
Box 8 1/2" L, 6 1/2" W, 1" D  
KO-100-CANIDS..... \$60.00



**Set of 31 Claws and Talons**  
Includes the 4 sets above plus beaver, turtle, komodo dragon, badger and porcupine.  
Box 16 1/2" L, 12 1/2" W, 1" D  
KO-100-SET-31..... \$385.00



**Sloth Bear Claw Set**  
*Melursus ursinus*  
Full set of front and rear claws.  
Box 16 1/2" L, 12 1/2" W, 1" D  
KO-062-SET-20..... \$290.00

All sets mounted in a glass-fronted Riker box. A copy of the photograph shown here with the claws and talons identified will be sent with your order. The claws and talons are not labeled in the Riker box.



www.boneclones.com

B<sup>C</sup> Bone Clones Osteological Reproductions

CLAWS AND TALONS

13

**1. Gorilla Skeleton, Articulated**

*Gorilla gorilla*

Each bone—over 180 pieces—was individually cast from a very large male silverback lowland gorilla. Licensed by the Philadelphia Zoo.

(Stand Included)

48" L, 26" W, 48" H

**SC-028-A..... \$4,800.00**

**Disarticulated**

(Not Shown)

**SC-028-D..... \$3,300.00**

**Bipedal, Articulated**

(Not Shown, Stand Included)

6' 1" H (on stand)

**SC-028-BP ..... \$4,500.00**

**2. Orangutan Skeleton, Articulated**

*Pongo abelii*

From a male Sumatran orangutan. Restricted to a small part of Sumatra, this endangered species verges on extinction.

(Stand and Base Included)

5' H on a 24" diameter base

**SC-002-A..... \$4,800.00**

**Orangutan Skeleton, Disarticulated**

(Not Shown)

**SC-002-D..... \$3,100.00**



**3. Chimpanzee Skeleton, Articulated**

*Pan troglodytes*

This specimen is a particularly large male.

(Stand Included)

34" L, 19" W, 31" H

**SC-003-A..... \$3,200.00**

**Wood Base for Display**

(Not Shown) 35 1/4" L, 16 1/4" W

**S-SC-003..... \$125.00**

**Disarticulated (Not Shown)**

**SC-003-D..... \$2,250.00**

**Bipedal, Articulated**

(Not Shown, Stand Included)

4' 9" H (on stand)

**SC-003-BP ..... \$3,200.00**




See our website for postcranial list and more information.



**1. Mandrill Baboon Skeleton, Articulated**

*Mandrillus sphinx* (Stand Included)  
33" L, 12" W, 25" H  
SC-010-A..... \$3,300.00

**Mandrill Baboon Skeleton, Disarticulated** (Not Shown)  
SC-010-D..... \$2,300.00



**Mandrill Baboon Hand, Articulated, Rigid**  
6" L  
SC-010-24-A ..... \$145.00

**2. Bonobo Skeleton, Articulated**

*Pan paniscus*  
A 9-year-old female from the Democratic Republic of the Congo. Sometimes called the pygmy chimpanzee, the smaller bonobo species is distinct from the common chimpanzee, *P. troglodytes*. Exclusively licensed to Bone Clones by the San Diego Natural History Museum.  
(Stand and Base Included)  
14" W, 45" H  
SC-123-A..... \$3,300.00

**Bonobo Skeleton, Disarticulated** (Not Shown)  
SC-123-D..... \$2,300.00



**3. Siamang Skeleton, Articulated**

*Symphalangus (Hylobates) syndactylus*  
The smallest of the great apes, gibbons and siamangs are known for their remarkable gymnastic ability and extremely long arms. While they have much in common, several characteristics distinguish the siamang from gibbons. Most noticeable is the siamang's impressive throat sac, which inflates to a size equal to the size of its head.  
(Stand and Base Included)  
16" W, 30" H  
SC-047-A..... \$2,250.00

**Siamang Skeleton, Disarticulated** (Not Shown)  
SC-047-D..... \$1,750.00



## New World Monkey Skeletons



**Weeping Capuchin, Articulated**  
*Cebus olivaceus*  
 27" L, 8 1/2" W, 11" H  
 Base: 28" L, 12" W  
**SC-263-A.....\$2,350.00**

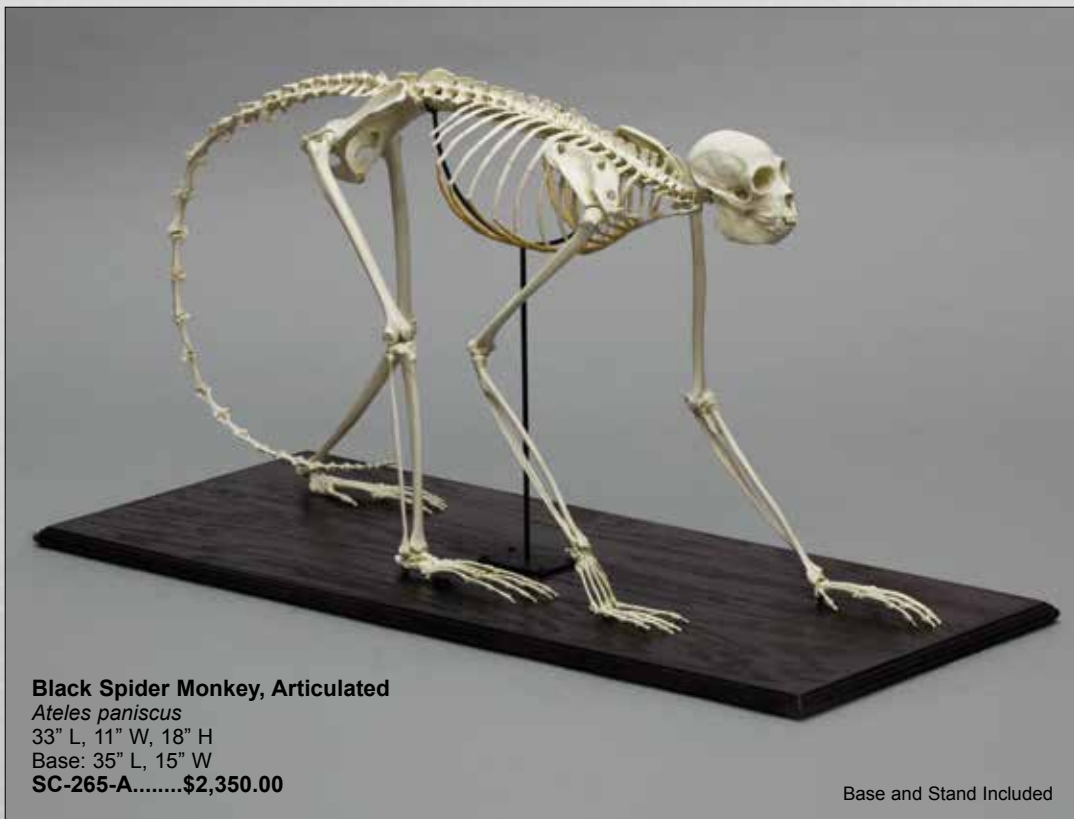
Base and Stand Included



**Weeping Capuchin**  
 4" L, 3" W, 3" H  
**BC-263 .....\$155.00**  
**Weeping Capuchin**  
**Skeleton, Disarticulated**  
**SC-263-D.....\$1,750.00**



See our website for  
 postcranial list and  
 more information.



**Black Spider Monkey, Articulated**  
*Ateles paniscus*  
 33" L, 11" W, 18" H  
 Base: 35" L, 15" W  
**SC-265-A.....\$2,350.00**

Base and Stand Included



**Black Spider Monkey**  
 4 1/4" L, 2 1/2" W, 3 1/2" H  
**BC-265 .....\$160.00**  
**Black Spider Monkey**  
**Skeleton, Disarticulated**  
**SC-265-D.....\$1,725.00**



See our website for  
 postcranial list and  
 more information.

## Old World Monkey Skeletons



**Vervet Monkey**  
 4 1/2" L, 3" W, 3" H  
 BC-069 .....\$160.00

**Vervet Monkey Skeleton, Disarticulated**  
 SC-069-D.....\$1,750.00



See our website for postcranial list and more information.



**Rhesus Macaque**  
 5" L, 3 1/2" W, 3 1/2" H  
 BC-137 .....\$170.00

**Rhesus Macaque Skeleton, Disarticulated**  
 SC-137-D.....\$1,750.00



See our website for postcranial list and more information.





**1. Gorilla Hand, Left, Male**  
*Gorilla gorilla*  
 12" L, 6" W  
**LC-05..... \$185.00**

**2. Gorilla Hand, Right, Female**  
*Gorilla gorilla*  
 10" L  
**LC-09..... \$165.00**

**3. Gorilla Foot, Left, Female**  
*Gorilla gorilla*  
 10" L, 5 1/2" W  
**LC-10..... \$165.00**

**4. Gorilla Foot, Right, Male**  
*Gorilla gorilla*  
 12 1/2" L, 4 1/2" W  
**LC-06..... \$185.00**

**5. Orangutan Hand, Left, Male**  
*Pongo abelii*  
 12 1/2" L, 6" W  
**LC-07..... \$185.00**

**6. Orangutan Hand, Right, Female**  
*Pongo pygmaeus*  
 9 1/2" L, 4 1/4" W  
**LC-11..... \$165.00**

**7. Orangutan Foot, Left, Female**  
*Pongo pygmaeus*  
 9" L, 3 1/2" W  
**LC-12..... \$165.00**

**8. Orangutan Foot, Right, Male**  
*Pongo abelii*  
 12 1/2" L, 6" W  
**LC-08..... \$185.00**

**9. Gibbon Hand, Left**  
*Hylobates lar*  
 4 1/2" L, 2" W  
**LC-13..... \$75.00**

**10. Gibbon Foot, Right**  
*Hylobates lar*  
 4 1/2" L, 2" W  
**LC-14..... \$75.00**

**11. Chimpanzee Hand, Right, Male**  
*Pan troglodytes*  
 8 1/2" L, 4 1/2" W  
**LC-23..... \$145.00**

**12. Chimpanzee Foot, Right, Male**  
*Pan troglodytes*  
 10" L  
**LC-24..... \$145.00**

**13. Bonobo Hand, Right, Male**  
*Pan paniscus*  
 8"  
**LC-28..... \$145.00**

**14. Bonobo Foot, Right, Male**  
*Pan paniscus*  
 9 1/2" L, 4 1/4" W  
**LC-29..... \$145.00**



**Orangutan Brain (shown)**  
 4 1/2" L, 3 1/4" W, 3" H  
**KO-287.....\$210.00**

**Chimpanzee Brain**  
 4 1/2" L, 3 1/2" W, 3 1/2" H  
**KO-292-B..\$210.00**



**Human Hand Life Cast, Right, Male**  
*Homo sapiens*  
 7 1/2" L, 4" W  
**LC-17.....\$140.00**



**Skeletal Human Hand Printed from CT Scan**  
*Homo sapiens*  
 (from same individual as LC-17, above)  
 9 1/2" H on stand  
**KO-391.....\$149.00**



**15. Gorilla Head, Male**  
*Gorilla gorilla*  
 15 1/4" L, 9 1/2" W, 8" H  
**LC-30.....\$160.00**

**16. Gorilla Head, Female**  
*Gorilla gorilla*  
 10" L, 8" W, 5" H  
**LC-25.....\$145.00**

**17. Orangutan Head, Male**  
*Pongo abelii*  
 16 1/2" L, 12" W, 8" H  
**LC-26.....\$160.00**



- 1. Gorilla, Male**  
*Gorilla gorilla*  
 12" L, 6 1/2" W, 9" H  
**BC-001** ..... \$290.00
- 2. Gorilla, Male, X-large**  
*Gorilla gorilla*  
 11 1/2" L, 7" W, 10" H  
**BC-036** ..... \$298.00
- 3. Mountain Gorilla, Male**  
*Gorilla gorilla beringei*  
 12 1/2" L, 7 1/2" W, 9" H  
**BC-124** ..... \$325.00
- 4. Gorilla, Female**  
*Gorilla gorilla*  
 8 1/2" L, 5 1/2" W, 7" H  
**BC-035** ..... \$268.00
- 5. Sumatran Orangutan, Male**  
*Pongo abelii*  
 9" L, 7" W, 10" H  
**BC-002S** ..... \$270.00
- 6. Bornean Orangutan, Male**  
*Pongo pygmaeus*  
 9 1/2" L, 6 1/2" W, 8" H  
**BC-002B** ..... \$255.00
- 7. Bornean Orangutan, Female**  
*Pongo pygmaeus*  
 7" L, 5" W, 6 1/2" H  
**BC-255** ..... \$240.00
- 8. Chimpanzee, Male**  
*Pan troglodytes*  
 8" L, 5 1/2" W, 6" H  
**BC-003** ..... \$238.00
- 9. Chimpanzee, Female**  
*Pan troglodytes*  
 7" L, 5" W, 6" H  
**BC-248** ..... \$238.00
- 10. Bonobo, Female**  
*Pan paniscus*  
 7" L, 4" W, 5" H  
**BC-123** ..... \$238.00
- 11. Bonobo, Male**  
*Pan paniscus*  
 7" L, 5" W, 5 1/2" H  
**BC-252** ..... \$245.00
- 12. White-handed Gibbon, Male**  
*Hylobates lar*  
 4" L, 2 1/2" W, 3" H  
**BC-291** ..... \$180.00
- 13. Siamang, Female**  
*Symphalangus (Hylobates) syndactylus*  
 5" L, 3" W, 4" H  
**BC-047** ..... \$170.00
- 14. Siamang, Male, X-large**  
*Symphalangus (Hylobates) syndactylus*  
 5" L, 4" W, 3 1/2" H  
**BC-290** ..... \$180.00
- 15. Chimpanzee, Juvenile**  
*Pan troglodytes*  
 7" L, 4 1/2" W, 5" H  
**BC-325** ..... \$228.00





**1. Hanuman Langur**  
*Semnopithecus entellus*  
 5" L, 4" W, 4" H  
**BC-084 .....\$179.00**

**2. Howler Monkey**  
*Alouatta palliate*  
 5" L, 3" W, 4 1/2" H  
**BC-017 .....\$168.00**

**3. Titi Monkey**  
*Callicebus torquatu*  
 1 3/4" L, 1 1/2" W, 2 1/4" H  
**BC-319 .....\$98.00**

**4. Talapoin Monkey**  
*Miopithecus talapoin*  
 2 3/4" L, 1 3/4" W, 2" H  
**BC-298 .....\$135.00**

**5. Squirrel Monkey**  
*Saimiri sciureus*  
 2 3/4" L, 1 3/4" W, 2" H  
**BC-320 .....\$98.00**

**6. Howler Monkey Hyoid**  
*Alouatta palliate*  
 An extra large hyoid, allows this large New World monkey to make its voice heard across a distance of two miles.  
 2 3/4" L, 1 1/2" W, 1 3/4" H  
**KO-179 .....\$55.00**



**Baboon**

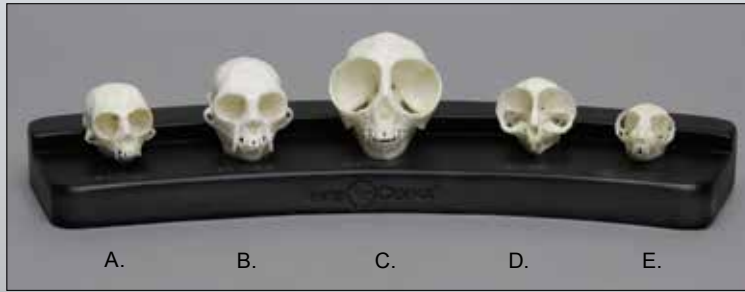
**6. Mandrill Baboon, Female**  
*Mandrillus sphinx*  
 7" L, 4" W, 4 1/2" H  
**BC-261 .....\$215.00**

**7. Mandrill Baboon, Male**  
*Mandrillus sphinx*  
 9" L, 5 1/2" W, 5" H  
**BC-010 .....\$240.00**

**8. Chacma Baboon, Female**  
*Papio ursinus*  
 Found on the savannahs of southern Africa, it has a dog-like muzzle, which motivates one of its common names, the dog-faced monkey.  
 7" L, 4" W, 4 1/2" H  
**BC-259 .....\$215.00**

**9. Chacma Baboon, Male**  
*Papio ursinus*  
 Able to run 35-40 mph, these primates also possess sharp hearing and eyesight.  
 9" L, 5" W, 5" H  
**BC-258 .....\$235.00**





**Comparative Set of 5  
Lesser Primates**  
(Base Included)  
**COMP-108.....\$499.00**

- A. BC-081 Pygmy Marmoset
- B. BC-080 Cotton-top Tamarin
- C. BC-109 Owl Monkey
- D. BC-050 Tarsier
- E. BC-136 Mouse Lemur



**Tarsier**

*Tarsius syrichta*  
1 ½" L, 1" W, 1" H  
**BC-050.....\$85.00**

**Cotton-top Tamarin**

*Saguinus oedipus*  
2" L, 1 ½" W, 1 ½" H  
**BC-080.....\$98.00**

**Owl Monkey**

*Aotus trivirgatus*  
2" L, 1 ½" W, 2" H  
**BC-109.....\$109.00**

**Pygmy Marmoset**

*Cebuella pygmaea*  
1 ½" L, 1" W, 1" H  
**BC-081.....\$98.00**

**Mouse Lemur**

*Microcebus murinus*  
1 ½" L, 1" W, ¾" H  
**BC-136.....\$90.00**



**Slender Loris**

*Loris tardigradus*  
2" L, 1" W, 1" H  
**BC-266.....\$98.00**

**Aye-Aye**

*Daubentonia madagascariensis*  
3" L, 2" W, 2" H  
**BC-163...\$170.00**

**Aye-Aye Arm**

*D. madagascariensis*  
7"  
**KO-163.....\$170.00**

**Slow Loris**

*Nycticebus coucang*  
2 ½" L, 1 ½" W, 1 ½" H  
**BC-264.....\$98.00**

**Common Marmoset**

*Callithrix jacchus*  
1 ¾" L, 1" W, 1 ½" H  
**BC-311.....\$98.00**



**Saki Monkey**

*Pithecia pithecia*  
3" L, 2" W, 2 ½" H  
**BC-304.....\$145.00**

**Ring-tailed Lemur**

*Lemur catta*  
3 ½" L, 2" W, 2" H  
**BC-087.....\$119.00**




**Indri Lemur** (See p 22)

*Indri indri*  
4" L, 2 ½" W, 2 ½" H  
**BC-282.....\$145.00**

**Sifaka Lemur**

*Propithecus verreauxi*  
3" L, 2 ¼" W, 2 ½" H  
**BC-284.....\$145.00**



<p>1.</p> 	<p>2.</p> 
<p><b>1. Gorilla Infant, 6 months old</b> <i>Gorilla gorilla</i> 4 3/4" L, 3 1/2" W, 3 3/4" H BC-339 ..... \$175.00</p> <p><b>2. Chimpanzee Infant, 11 months old</b> <i>Pan troglodytes</i> 4 1/2" L, 3 1/2" W, 3 1/2" H BC-207 ..... \$175.00</p> <p><b>3. Orangutan Infant, 11 months old</b> <i>Pongo pygmaeus</i> 4 1/2" L, 3 1/2" W, 4" H BC-208 ..... \$175.00</p>	<p>3.</p> 



**Jane Goodall and Chimpanzee "Hand-in-Hand"  
Life Cast on Base - Limited Edition**  
Limited Edition of 200, with brass plaque hand-signed by Dr. Jane Goodall and individually hand-numbered. Made of bronze-finished resin on a brass stand and resin base. Includes certificate of authenticity.  
JG-01..... \$1500.00



**Orangutan Fetal,  
Near-term**  
*Pongo pygmaeus*  
3 1/2" L, 2 1/2" W, 3" H  
BC-206 ..... \$135.00

**Chimpanzee Fetal,  
Near-term**  
*Pan troglodytes*  
3 1/2" L, 2 1/2" W, 2 1/2" H  
BC-205 ..... \$135.00

	 <p><b>Chimpanzee, Male, Calvarium Cut</b> <i>Pan troglodytes</i> 8" L, 5 1/2" W, 6 1/2" H BC-292 ..... \$295.00</p>
-------------------------------------------------------------------------------------	-------------------------------------------------------------------------------------------------------------------------------------------------------------------------------------------------------------------------

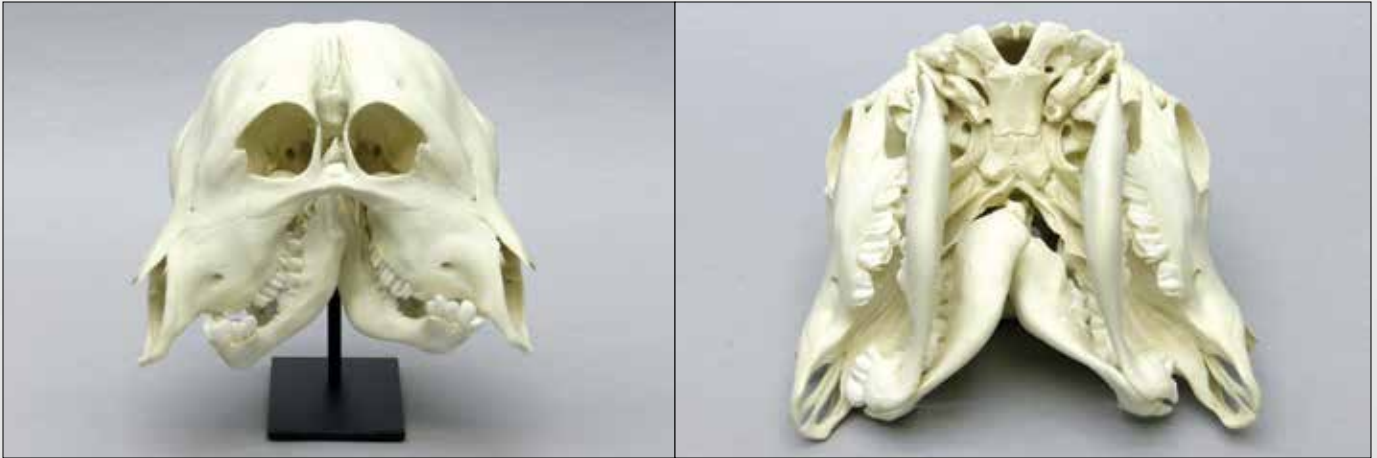


**Indri Lemur Skull**  
*Indri indri*  
4" L, 2 1/2" W, 2 1/2" H  
BC-282 ..... \$145.00

**Indri Lemur Skeleton,  
Articulated**  
(Log and Base Included)  
12" W x 28" H  
SC-282-A..... \$2,900.00

**Indri Lemur Skeleton,  
Disarticulated**  
SC-282-D..... \$2,400.00

## ANIMAL PATHOLOGY AND TRAUMA



**Two-faced Calf** *Bos taurus* (Stand Included)  
8" W, 8 3/4" L, 6 1/4" H **BC-246**.....\$675.00



**Comparative Pathology Deer Jaws**  
*Odocoileus* sp.  
Actinomycosis, a result of bacterial infection, produces abscesses.  
**FO-401** ..... \$110.00

**Comparative Pathology Goat Cannon Bones (metatarsals)**  
*Capra hircus*  
Severe bone infection or metabolic bone disease.  
**FO-402** ..... \$72.00

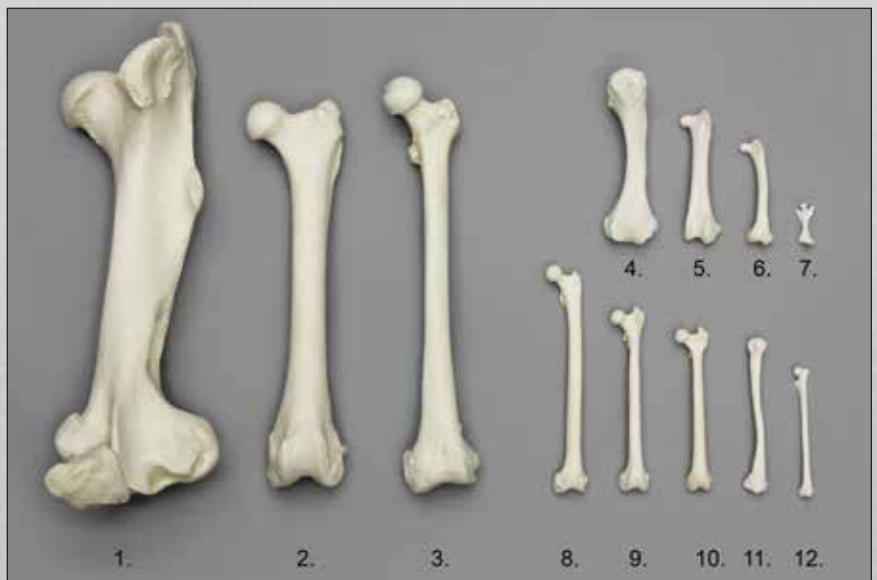
**Comparative Pathology Mandrill Femurs**  
*Papio* sp.  
Gunshot wound pathology, shattering the diaphysis. Substantial healing shown.  
**FO-403** ..... \$110.00

**Comparative Pathology Coyote Tibiae and Fibulae Joined**  
*Canis latrans*  
Healed blunt force injury causing deformity.  
**FO-404** ..... \$75.00

## BONE SCALING FEMUR SET

**Comparative Bone Scaling Set of 12 Femora**  
**COMP-115**.....\$729.00

- 1. SC-125-21 Horse.....\$185.00
- 2. SC-018A-23 Sabertooth Cat.....\$120.00
- 3. SC-211-F Human Adult Female ....\$56.00
- 4. SC-027-21 Komodo Dragon.....\$50.00
- 5. SC-043-21 Harpy Eagle.....\$40.00
- 6. SC-165-21 Kiwi.....\$40.00
- 7. SC-026-21 Platypus.....\$40.00
- 8. SC-265-21 Spider Monkey.....\$50.00
- 9. SC-137-21 Rhesus Macaque.....\$50.00
- 10. SC-069-21 Vervet Monkey.....\$50.00
- 11. SC-094-F Goliath Frog.....\$29.00
- 12. SC-049-21 Flying Lemur.....\$40.00





**Cougar, Male**  
*Puma concolor*  
 8" L, 5 1/2" W, 4" H  
 BC-015 .....\$215.00

**Clouded Leopard, Male**  
*Neofelis nebulosa*  
 7 1/2" L, 4 1/2" W, 3 1/2" H  
 BC-005 .....\$158.00

**Snow Leopard, Male**  
*Uncia uncia*  
 7 1/2" L, 5" W, 4" H  
 BC-056 .....\$198.00

**1. African Leopard, Male**

*Panthera pardus*  
 These large cats are mostly nocturnal and solitary.  
 9 1/2" L, 5 1/2" W, 4 1/2" H  
 BC-060 .....\$199.00

**African Leopard Tooth**  
 (Not Shown)  
 2 3/4" L  
 KO-248 .....\$14.50

**2. Jaguar, Male**

*Panthera onca*  
 Ranges from the southwestern U.S. to South America.  
 10 1/2" L, 7" W, 5" H  
 BC-057 .....\$199.00

**3. Siberian Tiger, Male**  
*Panthera tigris altaica*  
 15" L, 10" W, 6 1/2" H  
 BC-008 .....\$320.00

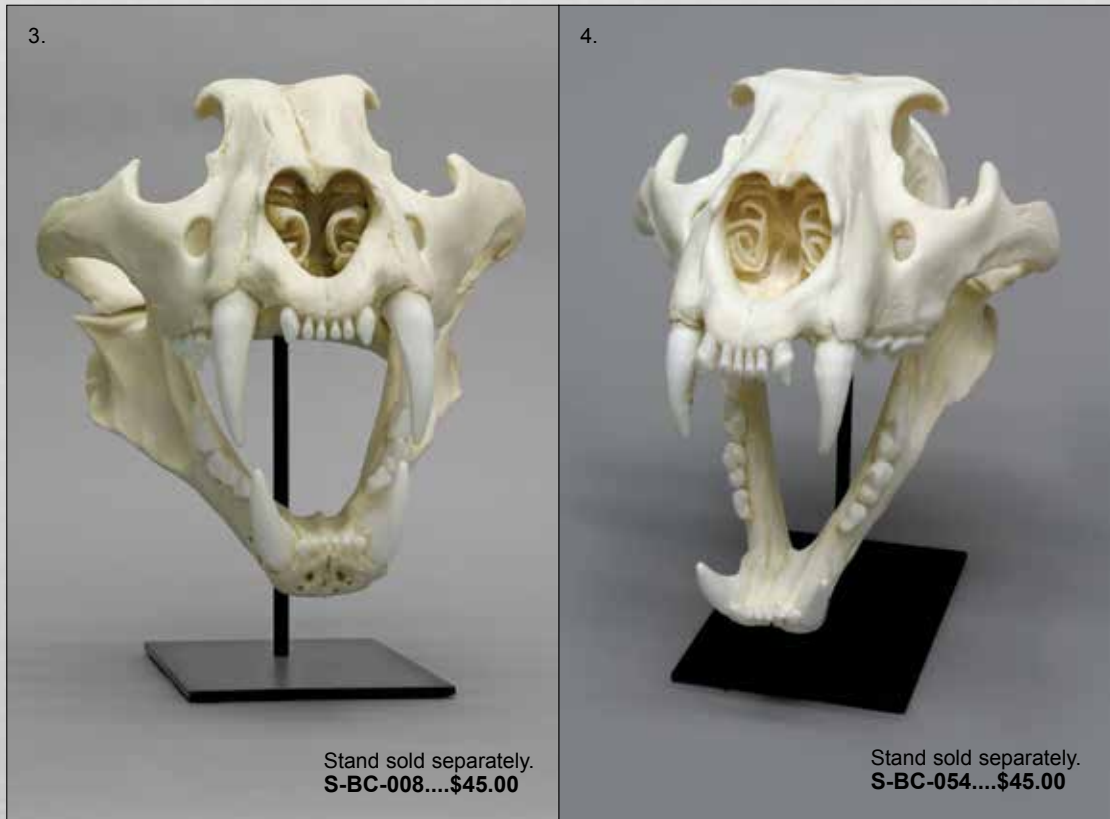
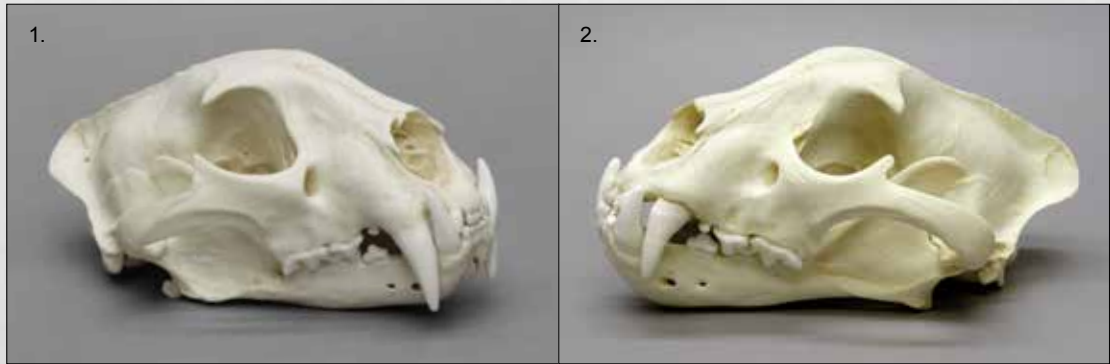
**Tiger Teeth, Set of 4**  
 Upper and lower canines.  
 (Not Shown)  
 KO-217-4 .....\$58.00

**Tiger Tooth, Single**  
 Large canine.  
 (Not Shown)  
 4 1/2" L  
 KO-217 .....\$15.00

**4. African Lion, Male**  
*Panthera leo*  
 14" L, 9 1/2" W, 6 1/2" H  
 BC-054 .....\$320.00

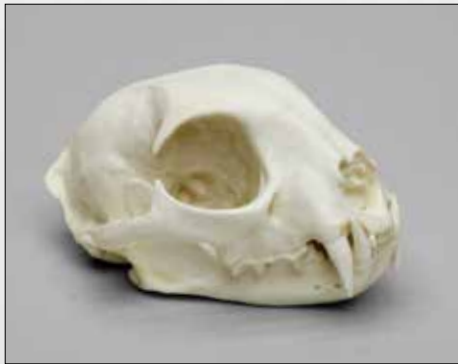
**Lion Teeth, Set of 4**  
 Upper and lower canines.  
 (Not Shown)  
 KO-216-4 .....\$58.00

**Lion Tooth, Single**  
 Large canine.  
 (Not Shown)  
 3 3/4" L  
 KO-216 .....\$15.00



Stand sold separately.  
 S-BC-008.....\$45.00

Stand sold separately.  
 S-BC-054.....\$45.00



**Bobcat, Male** (Economy)  
*Lynx rufus*  
 5" L, 3 1/2" W, 2 1/2" H  
**BC-146E.....\$88.00**



**Cheetah, Male**  
*Acinonyx jubatus*  
 7" L, 5" W, 4" H  
**BC-079.....\$190.00**



**Ocelot**  
*Leopardus pardalis*  
 6" L, 4" W, 3" H  
**BC-239.....\$150.00**



**Common House Cat**  
*Felis catus (Felis domesticus)*  
 4" L, 2 3/4" W, 2" H  
**BC-131.....\$100.00**

**Common House Cat, Economy**  
**BC-131E.....\$76.00**



**Bengal Tiger, Male**  
*Panthera tigris tigris*  
 13 1/2" L, 9 1/2" W, 6 1/2" H  
**BC-289.....\$335.00**

Stand sold separately.  
**S-BC-289.....\$45.00**

Stands Available for  
 Select Items. See our  
 Website for Details.



**African Lion, X-large, Male**  
*Panthera leo*  
 15 1/2" L, 11" W, 7" H  
**BC-286.....\$335.00**

Stand sold separately.  
**S-BC-286.....\$45.00**





**Dog, English Bulldog**  
*Canis familiaris*  
 6 1/2" L, 5" W, 4 1/2" H  
 BC-128 ..... \$170.00

**Dog, French Bulldog**  
*Canis familiaris*  
 5" L, 4 1/2" W, 4" H  
 BC-139 ..... \$170.00

**Dog, White Bull Terrier**  
*Canis familiaris*  
 7" L, 4" W, 3 1/2" H  
 BC-260 ..... \$180.00

**Dog, Airedale**  
*Canis familiaris*  
 6 1/2" L, 4" W, 4" H  
 BC-127 ..... \$170.00

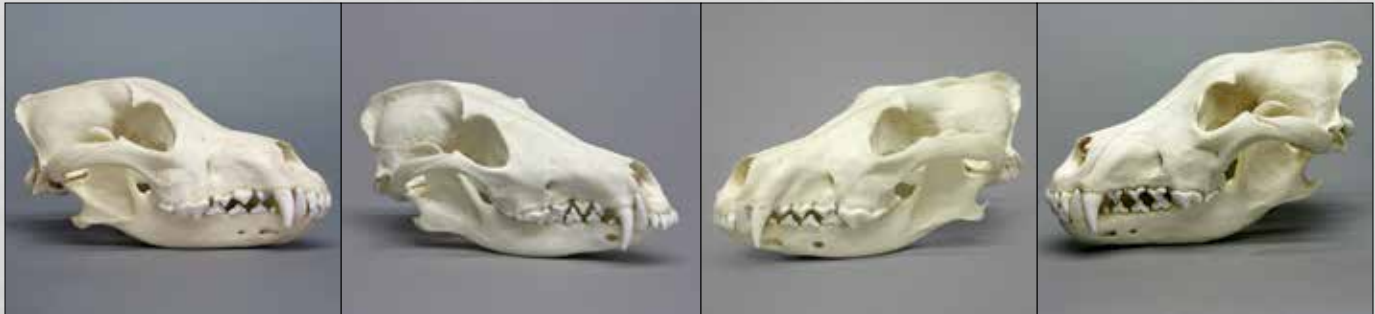


**Dog, Saluki**  
*Canis familiaris*  
 7 1/2" L, 4" W, 3 1/2" H  
 BC-126 ..... \$170.00

**Dog, Great Dane**  
*Canis familiaris*  
 10 1/2" L, 6" W, 6 1/2" H  
 BC-022 ..... \$170.00

**Dog, St. Bernard**  
*Canis familiaris*  
 10 1/2" L, 5 1/2" W, 7" H  
 BC-023 ..... \$175.00

**Dog, Pitbull**  
*Canis familiaris*  
 8 1/2" L, 5 1/2" W, 5" H  
 BC-186 ..... \$180.00



**Mexican Wolf**  
*Canis lupus baileyi*  
 9" L, 5" W, 4 1/2" H  
 BC-172 ..... \$190.00

**Maned Wolf**  
*Chrysocyon brachyurus*  
 9 1/2" L, 5" W, 4 1/2" H  
 BC-024 ..... \$160.00

**Red Wolf** *Canis rufus*  
 A very rare North American wolf.  
 8 1/2" L, 5" W, 5" H  
 BC-147 ..... \$175.00

**Siberian Wolf, Male**  
*Canis lupus*  
 11" L, 6 1/2" W, 6" H  
 BC-004 ..... \$200.00



**Dire Wolf Antique**  
*Canis dirus*  
 12 1/2" L, 6 1/2" W, 6 1/2" H  
 BC-020A..... \$230.00

**Spotted Hyena**  
*Crocuta crocuta*  
 11" L, 7" W, 6 1/2" H  
 BC-032 ..... \$250.00

**Gray Fox**  
*Urocyon cinereoargenteus*  
 5" L, 2 1/2" W, 2 1/2" H  
 BC-144E..... \$85.00

**Coyote**  
*Canis latrans*  
 8" L, 4" W, 3 1/2" H  
 BC-143E..... \$85.00







**Kodiak Grizzly Bear, X-Large Male**  
*Ursus arctos middendorffi*  
 18" L, 10 1/2" W, 9 1/2" H  
**BC-021 ..... \$390.00**



**Cave Bear**  
*Ursus spelaeus*  
 20" L, 13" W, 11 1/2" H  
**BC-132 ..... \$420.00**



**Polar Bear**  
*Ursus maritimus*  
 This is considered the second-largest polar bear skull ever found.  
 17 1/2" L, 10 1/2" W, 9" H  
**BC-063 ..... \$390.00**



**Cave Bear Molar**  
 2" W  
**KO-025 ..... \$15.00**



**Cave Bear Baculum**  
 10" L  
**KO-133 ..... \$54.00**



**Black Bear Paw (right front), complete**  
 9" L  
**KO-075 ..... \$155.00**

**Black Bear Claws (right front), Set of 5**  
**KO-076 ..... \$60.00**



**Grizzly Bear, Average Size**  
*Ursus arctos*  
 14 1/2" L, 8" W, 7 1/2" H  
**BC-285 ..... \$335.00**



**Black Bear**  
*Ursus americanus*  
 10 1/2" L, 7" W, 6" H  
**BC-099 ..... \$205.00**

**Black Bear, Economy**  
**BC-099E ..... \$170.00**





**Giraffe Neck Vertebrae,  
Set of 7**  
KO-225-7.....\$750.00

**Giraffe Skull and Disarticulated Neck Vertebrae**  
*Giraffa camelopardalis*  
(Please note that product is shipped unassembled)  
SC-034-D.....\$1,400.00



**Giraffe Skull  
and Neck Vertebrae  
with Stand**  
7' H  
SC-034-A..... \$1,890.00



**Giraffe Skull  
and Neck Vertebrae  
with Stand and Base**  
7' H (Base 4' L x 2' W)  
SC-034-AB... \$2,250.00



**Giraffe Cervical  
Vertebra, Single**  
14 1/4" L, 5 1/2" W, 7 1/2" H  
KO-225..... \$120.00



**Giraffe Skull**  
*Giraffa camelopardalis*  
28 1/4" L, 12 1/2" W, 17 1/4" H  
BC-034.....\$690.00

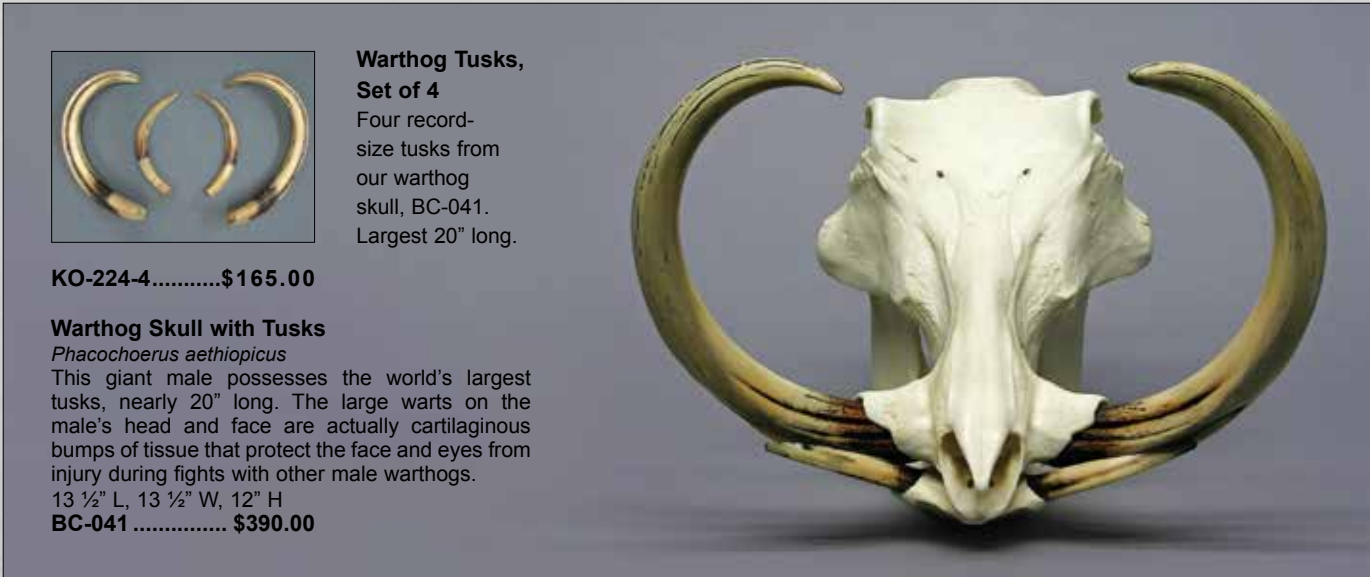


**Okapi Skull**  
*Okapia johnstoni*  
 Like its relative the giraffe, the okapi also has two bony projections. Color nuances in the skull, teeth and horns reflect the specimen's age.  
 17 1/2" L, 7" W, 11" H  
**BC-039 .....\$400.00**



**Babirusa Tusks, Set of 4**  
 The odd canines give rise to its name translated 'pig-deer'.  
 9 1/2" around the curve  
**KO-286-4..... \$120.00**

**Babirusa Skull with Tusks**  
*Babyrousa babyrussa*  
 The babirusa is found in some of the rainforests of Indonesia.  
 11" L, 6" W, 7 1/2" H  
**BC-251 ..... \$350.00**



**Warthog Tusks, Set of 4**  
 Four record-size tusks from our warthog skull, BC-041.  
 Largest 20" long.

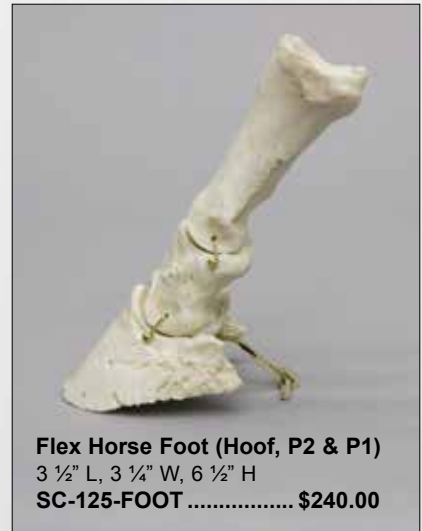
**KO-224-4.....\$165.00**

**Warthog Skull with Tusks**  
*Phacochoerus aethiopicus*  
 This giant male possesses the world's largest tusks, nearly 20" long. The large warts on the male's head and face are actually cartilaginous bumps of tissue that protect the face and eyes from injury during fights with other male warthogs.  
 13 1/2" L, 13 1/2" W, 12" H  
**BC-041 ..... \$390.00**





Custom mounting available.  
Please inquire for pricing.



**Flex Horse Foot (Hoof, P2 & P1)**  
3 1/2" L, 3 1/4" W, 6 1/2" H  
SC-125-FOOT ..... \$240.00

**Horse Skeleton, Male,  
Articulated**  
*Equus caballus*

This individual was a large, retired police horse. Fully articulated in easy-to-assemble sections. Special packing and shipping required, not included in price.  
(Stand Included)

100" L, 21" W, 77" H  
SC-125-A..... \$12,000.00

**Horse Skeleton,  
Disarticulated**

SC-125-D..... \$6,600.00



**1. Horse Front Leg, Articulated,  
with Scapula on Base**

(Stand and Base Included)  
61" H

SC-125-67-AS .....\$929.00

**2. Horse Front Leg,  
Disarticulated**

SC-125-67-DS .....\$706.00



**Horse Hyoid**

9 1/2" L, 3 1/4" W, 2 3/4" H

SC-125-HY .....\$115.00



**Horse Skull**

24" L, 8 1/2" W, 12" H

BC-125 .....\$400.00



**Rock Hyrax** *Procavia capensis*  
 Closely related to elephants and manatees, its teeth are similar to a tiny rhino's teeth.  
 3 1/2" L, 2 1/4" W, 3" H  
**BC-070 .....\$115.00**



**Meerkat** *Suricata suricatta*  
 Related to the mongoose, this African species lives in colonies, often sitting up like prairie dogs.  
 2 1/2" L, 1 1/2" W, 1 1/2" H  
**BC-042 .....\$84.00**



**Lesser Panda** *Ailurus fulgens*  
 Found throughout the Himalayas, the lesser panda is also known as the red panda.  
 4" L, 3" W, 3 1/2" H  
**BC-086 .....\$145.00**



**Muntjac** *Muntiacus reevesi*  
 Also called the barking deer, the muntjac is relatively common in its home range of China and Taiwan.  
 10" L, 4 1/2" W, 5 1/2" H  
**BC-164 .....\$190.00**



**Chinese Water Deer** *Hydropotes inermis*  
 Originally from China and Korea, they are relatively small and lack antlers.  
 6 1/2" L, 3" W, 4" H, (2 1/2" tusks)  
**BC-091 .....\$170.00**



**Giant Panda, Adult** *Ailuropoda melanoleuca*  
 10 1/2" L, 8" W, 8 1/2" H  
**BC-324 .....\$325.00**



**Giant Panda, Adolescent** *Ailuropoda melanoleuca*  
 9 1/2" L, 7 1/2" W, 7 1/2" H  
**BC-025 .....\$270.00**





**Greater Flying Fox Skull**  
 2 3/4" L, 1 1/2" W, 1 1/2" H  
 BC-312 .....\$95.00



**Greater Flying Fox Skeleton, Articulated**  
*Pteropus vampyrus*  
 16" L, 40" W, 16" H (On Stand)  
 SC-312-A.....\$1,622.00

**Greater Flying Fox Skeleton, Disarticulated**  
 SC-312-D.....\$1,022.00



**Flying Lemur Skeleton, Articulated**  
*Cynocephalus volans*  
 Also known as a colugo.  
 27" L, 20" W, 10" H (On Stand)  
 SC-049-A..... \$990.00

**Flying Lemur Skeleton, Disarticulated**  
 SC-049-D..... \$620.00



**Flying Lemur Skull**  
 2 1/2" L, 1 1/4" W, 1 1/2" H  
 BC-049 .....\$95.00



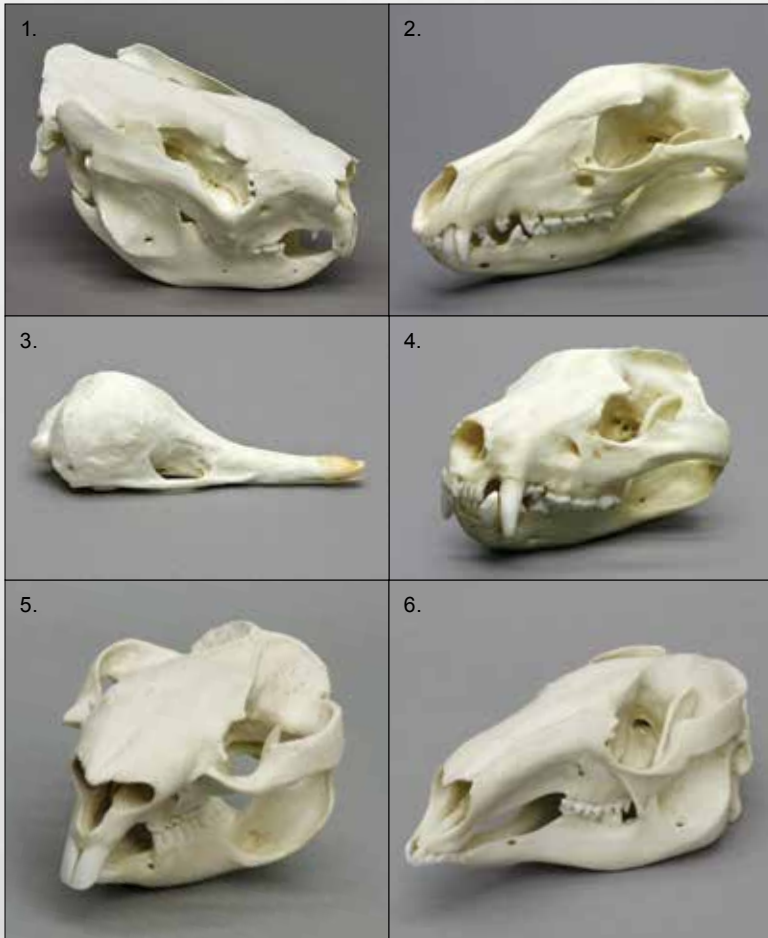
**Elephant Shrew**  
*Elephantulus rufescens*  
 1 1/2" L, 3/4" W, 3/4" H  
 BC-082 ..... \$80.00



**Tree Shrew**  
*Tupaia glis*  
 3 1/4" L, 1/2" W, 1" H  
 BC-083 ..... \$80.00



**Aardvark**  
*Orycteropus afer*  
 8 1/2" L, 3 1/2" W, 3 1/2" H  
 BC-308 .....\$195.00



**1. Koala**  
*Phascolarctos cinereus*  
 5 ½" L, 3" W, 4" H  
**BC-066 ..... \$154.00**

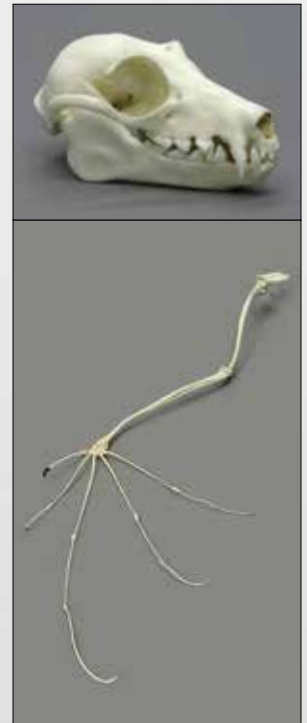
**2. Tasmanian Wolf**  
*Thylacinus cynocephalus*  
 8" L, 4 ½" W, 4 ½" H  
**BC-012 ..... \$180.00**

**3. Echidna**  
*Tachyglossus aculeatus*  
 5" L, 2" W, 1 ½" H  
**BC-296 ..... \$95.00**

**4. Tasmanian Devil**  
*Sarcophilus harrisii*  
 5 ½" L, 4 ½" W, 3" H  
**BC-013 ..... \$155.00**

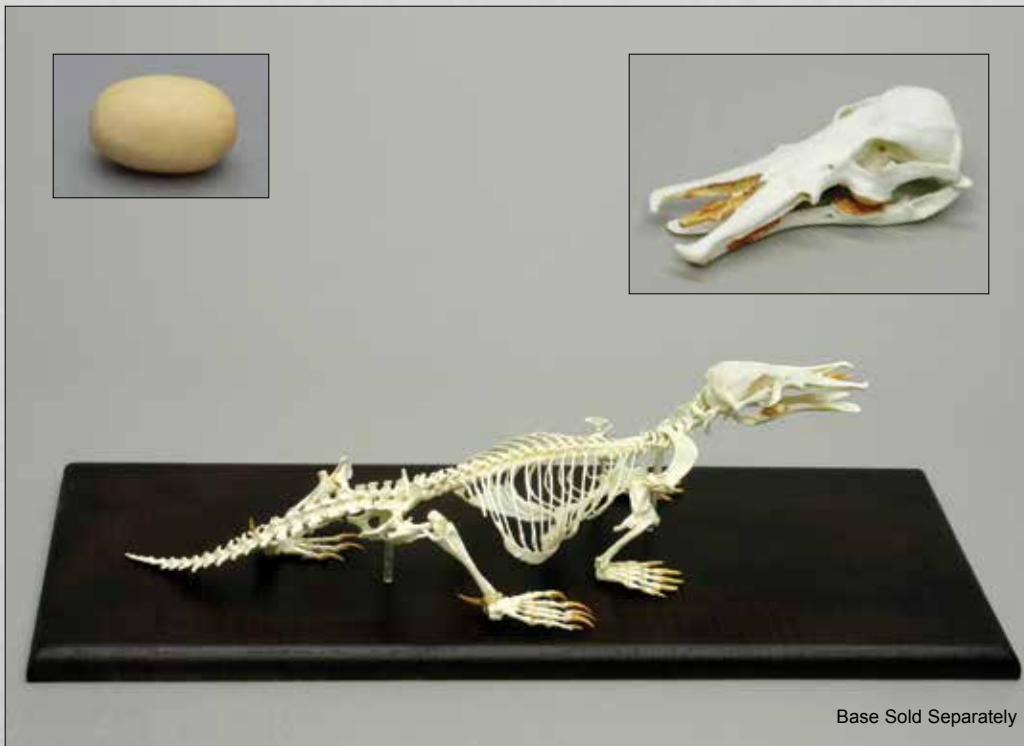
**5. Wombat**  
*Vombatus ursinus*  
 7" L, 5 ½" W, 4" H  
**BC-327 ..... \$175.00**

**6. Red Kangaroo**  
*Macropus rufus*  
 8" L, 4" W, 4" H  
**BC-328 ..... \$170.00**



**Fruit Bat Skull**  
*Pteropus poliocephalus*  
 2 ¾" L, 1 ½" W, 1 ½" H  
**BC-007 ..... \$85.00**

**Fruit Bat Wing**  
 20" L  
**KO-180 ..... \$165.00**



**Platypus Skeleton, Articulated**  
*Ornithorhynchus anatinus*  
 The duck-billed platypus lays eggs, yet suckles its young. It has fur like a seal, a tail like a beaver, a bill like a duck and poisonous spurs.  
 (Base Sold Separately)  
**SC-026-A ..... \$595.00**

**Platypus Skeleton, Disarticulated**  
**SC-026-D ..... \$390.00**

**Platypus Base, Wood**  
 23" L, 9" W, 1" H  
**S-07 ..... \$55.00**

**Platypus Skull**  
 4" L, 2" W, 1 ½" H  
**BC-026 ..... \$95.00**

**Platypus Egg**  
 ¾" L, ½" W  
**KO-442 ..... \$22.00**





**Vampire Bat, Life-size**  
*Desmodus rotundus*  
 1" L, 1/2" W, 1" H  
**BC-048 ..... \$75.00**



**Cave Myotis Bat, Life-size**  
*Myotis velifer*  
 5/8" L, 3/8" W, 3/8" H  
**BC-334 ..... \$75.00**



**Cave Myotis Bat, 8:1 scale**  
 (shown with life-size skull for scale, not included)  
*Myotis velifer*  
 5 1/4" L, 3 1/4" W, 3 1/4" H  
**TSBC-334.....\$175.00**



**Black-footed Ferret**  
*Mustela nigripes*  
 2 1/2" L, 1 3/4" W, 1 1/2" H  
**BC-055 ..... \$94.00**



**Three-toed Sloth**  
*Bradypus tridactylus*  
 3 1/2" L, 2" W, 2 1/4" H  
**BC-336 ..... \$98.00**



**Two-toed Sloth**  
*Choloepus hoffmanni*  
 4 1/2" L, 3" W, 2 1/2" H  
**BC-098 ..... \$98.00**



**Wolverine**  
*Gulo gulo*  
 Related to ferrets and weasels.  
 6 1/2" L, 4" W, 3" H  
**BC-090 ..... \$175.00**



**White-tailed Doe Deer** *Odocoileus virginianus*  
 10" L, 4 1/2" W, 5 1/2" H  
**BC-100 ..... \$175.00**  
**White-tailed Doe Deer, Economy**  
**BC-100E..... \$150.00**





**Pika (Rock Rabbit)**  
*Ochotona collaris*  
 2" L, 1" W, 1" H  
 BC-088 ..... \$90.00



**Common Armadillo**  
*Dasyus novemcinctus*  
 3 3/4" L, 1 1/2" W, 1 1/4" H  
 BC-288 ..... \$90.00



**Fairy Armadillo**  
*Chlamyphorus truncatus*  
 1 1/2" L, 1" W, 1" H  
 BC-283 ..... \$90.00



**Capybara** *Hydrochoerus hydrochaeris*  
 10" L, 5 1/2" W, 5 1/2" H  
 BC-061 ..... \$190.00



**Giant Modern Armadillo** *Priodontes maximus*  
 7" L, 3" W, 3 1/2" H  
 BC-089 ..... \$148.00



**Solenodon, Haitian**  
*Solenodon paradoxus*  
 3" L, 1 1/2" W, 1 1/4" H  
 BC-053 ..... \$84.00



**Solenodon, Cuban**  
*Solenodon cubanus*  
 3 1/2" L, 1 1/2" W, 1 1/2" H  
 BC-052 ..... \$84.00



**Giant Anteater**  
*Myrmecophaga tridactyla*  
 13 1/2" L, 2 1/2" W, 2 1/2" H  
 BC-011 ..... \$160.00



## North American Mammals (E = Economy)

**B**one Clones® quality at an economical price. Our goal with this series is to produce affordable replicas so that a new generation of nature enthusiasts can learn about animals and anatomy. While care is taken to ensure the major features of the skull are preserved, the small details of the neural passages may not be opened, making it possible to produce a more economical replica that is still an excellent teaching aid. In many cases we have also introduced the claws of the corresponding species. We think these will be a useful addition to the teaching repertoire of any teacher of young students.



**Gray Fox**  
*Urocyon cinereoargenteus*  
5" L, 2 ½" W, 2 ½" H  
BC-144E.....\$85.00



**Raccoon**  
*Procyon lotor*  
4 ½" L, 3" W, 2 ½" H  
BC-142E..... \$85.00



**Skunk**  
*Mephitis mephitis*  
3" L, 2" W, 1 ½" H  
BC-148E..... \$68.00



**Coyote**  
*Canis latrans*  
8" L, 4" W, 3 ½" H  
BC-143E..... \$85.00



**Bobcat, Male**  
*Lynx rufus*  
5" L, 3 ½" W, 2 ½" H  
BC-146E.....\$88.00



**Common House Cat, Economy**  
*Felis catus (Felis domesticus)*  
4" L, 2 ¾" W, 2" H  
BC-131E.....\$76.00



**Common American Beaver**  
*Castor canadensis*  
5 ½" L, 3 ½" W, 3 ½" H  
BC-101E.....\$85.00



**White-tailed Jack Rabbit**  
*Lepus townsendii*  
4" L, 1 ½" W, 2" H  
BC-145E..... \$68.00



**Ringtail**  
*Bassariscus astutus*  
3" L, 2" W x 1 ½" H  
BC-158E..... \$68.00



**Black Bear, Economy**  
*Ursus americanus*  
 10 1/2" L, 7" W, 6" H  
**BC-099E.....\$170.00**



**White-tailed Doe Deer, Economy**  
*Odocoileus virginianus*  
 10" L, 4 1/2" W, 5 1/2" H  
**BC-100E..... \$150.00**



**Javelina**  
*Tayassu tajacu*  
 9" L, 4" W, 5 1/2" H  
**BC-157E..... \$148.00**



**Canid Comparison Economy Set**  
 (Domestic Dog, Wolf, Coyote, Fox)  
**COMP-CANID ..... \$435.00**




**Dietary Comparison Economy Set**  
 (Deer, Cougar, Raccoon, Elephant Shrew)  
**COMP-DIET ..... \$446.00**



**Predator - Prey Comparison Economy Set**  
 (Jackrabbit, Bobcat, Coyote)  
**COMP-PREY..... \$229.00**

### Mystery Bone Box



**Mystery Bone Box**  
 Perfect for educational exploration in science and art, and geared toward k-12 education, our mystery bone boxes contain a miscellaneous collection of seconds: less than perfect specimens that may be un-tooled, partially painted, or discontinued. The objects included are randomly chosen, packed and sealed beforehand. They will differ in size and shape, and may include teeth, claws, eggs, human or zoological long bones, cranial parts, postcranial parts, etc. We are sorry, but no special requests for contents can be accepted. Mystery bone boxes are sold as is and are non-returnable and non-refundable.  
**MB-01..... \$50.00**





**Sumatran Rhinoceros  
Horns, Pair**  
KO-251....\$170.00

**Single Horn, Large**  
6" H, 3" Base  
KO-251L....\$110.00

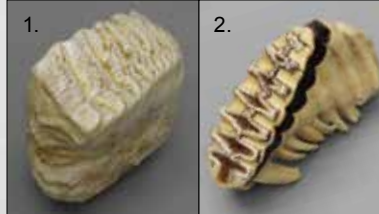
**Single Horn, Small**  
3" H, 3" Base  
KO-251S....\$80.00



**Sumatran Rhinoceros  
Skull with Horns**  
*Dicerorhinus sumatrensis*  
21" L, 11 1/2" W, 14" H  
BC-051H.....\$900.00

**Sumatran Rhinoceros  
Skull without Horns**  
BC-051.....\$750.00

**Javan Rhinoceros Skull**  
*Rhinoceros sondaicus*  
26" L, 13" W, 15 1/2" H  
BC-326.....\$1,120.00



**1. Asian Elephant Tooth**  
*Elephas maximus*  
5" L, 2 1/2" W, 5 1/2" H  
KO-313.....\$170.00

**2. African Elephant Tooth**  
*Loxodonta africana*  
12" L  
KO-045.....\$150.00

**Black Rhinoceros  
Horns, Pair**  
*Diceros bicornis*  
KO-252P.....\$310.00

**Black Rhinoceros  
Horn, Large**  
18 1/4" L, 5" W  
KO-252L.....\$185.00

**Black Rhinoceros  
Horn, Small**  
9" L, 6 3/4" W  
KO-252S.....\$140.00



**White Rhinoceros  
Horns, Pair**  
KO-221....\$450.00

**Single Horn, Large**  
24" L, 8 1/2" W  
KO-221L....\$275.00

**Single Horn, Small**  
11" L, 7 1/2" W  
KO-221S....\$175.00

**White Rhinoceros  
Skull with Horns**  
*Ceratotherium simum*  
Weighing around 3000 pounds,  
the name "white rhinoceros"  
is a misnomer, based on the  
incorrect translation of a word  
that actually means "wide."  
31 1/2" L, 13 1/2" W, 44" H  
BC-058H.....\$1,290.00

**White Rhinoceros Skull  
without Horns.**  
BC-058.....\$990.00





**Pygmy Hippopotamus Teeth**

A full set of teeth. (10)  
**KO-007S .....\$220.00**

**Pygmy Hippopotamus**

*Choeropsis liberiensis*  
 The pygmy hippo is one-third the size of the common hippo.  
 13 1/2" L, 9" W, 9" H  
**BC-076 .....\$425.00**



**Hippopotamus Teeth**

A full set of 12 hippopotamus teeth from our large skull, BC-037.  
**KO-006S.....\$550.00**

**Hippopotamus**  
*Hippopotamus amphibius*  
 27" L, 18" W, 20" H  
**BC-037 ..... \$1,550.00**

**Hippopotamus Canine, Large**  
 26" L  
**KO-006.....\$99.00**



**Hippopotamus Molar**  
 2" L, 2 3/4" W, 3" H  
**KO-214.....\$24.00**

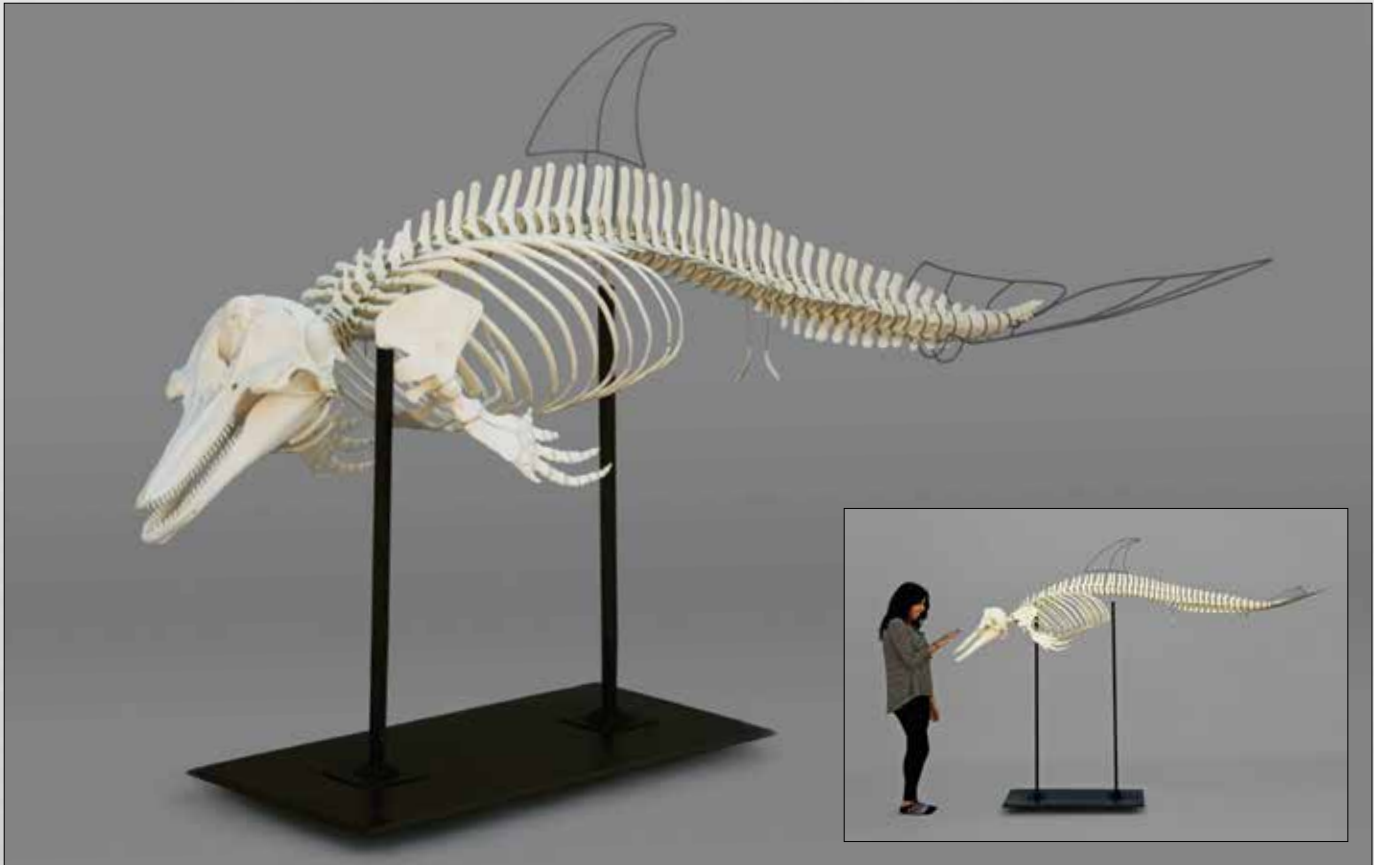




**Bottlenose Dolphin Skull**  
 18 1/2" L, 9 1/2" W, 8" H  
**BC-033.....\$390.00**



**Bottlenose Dolphin Pectoral Fin (Flipper) and Scapula Set**  
*Tursiops truncatus*  
**KO-233-SET.....\$248.00**



**Atlantic Bottlenose Dolphin Skeleton, Articulated**

*Tursiops truncatus*

The dolphin's skeleton is exquisitely tailored to its life in the water: light bones, flexible spine, flattened pectoral fins, dorsal fin and tail flukes, and an elastic rib connection to the spine. The bottlenose dolphin is found across the world in temperate and tropical waters. This articulated skeleton includes removable metal fins.

(Stands and Base Included)

8' L

Base: 37" L, 19" W

**SC-033-A.....\$9,800.00**



**Atlantic Bottlenose Dolphin Skeleton, Disarticulated**  
**SC-033-D.....\$7,700.00**



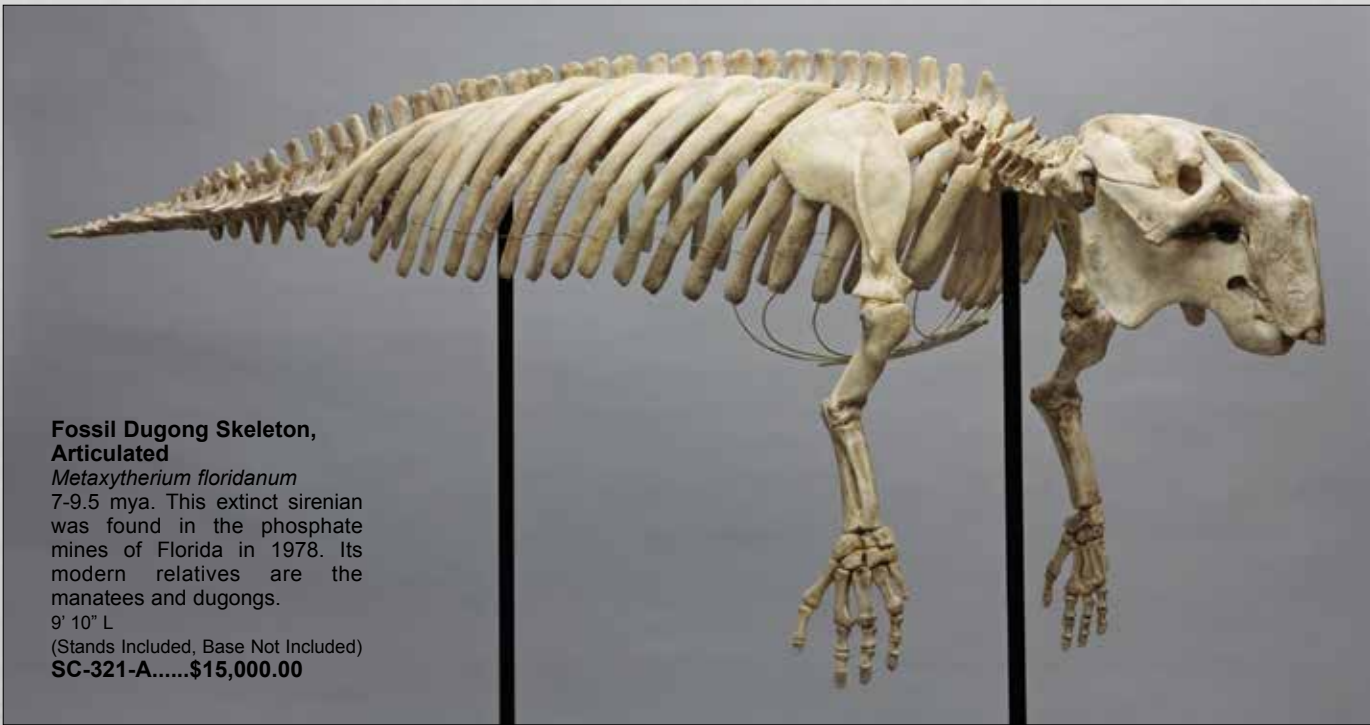
**Modern Dugong Skull**  
*Dugong dugon*  
 14 1/2" L, 8" W, 8 1/2" H  
 BC-097 .....\$425.00



**Fossil Dugong Skull**  
 17" L, 10" W, 11" H  
 BC-321 .....\$850.00

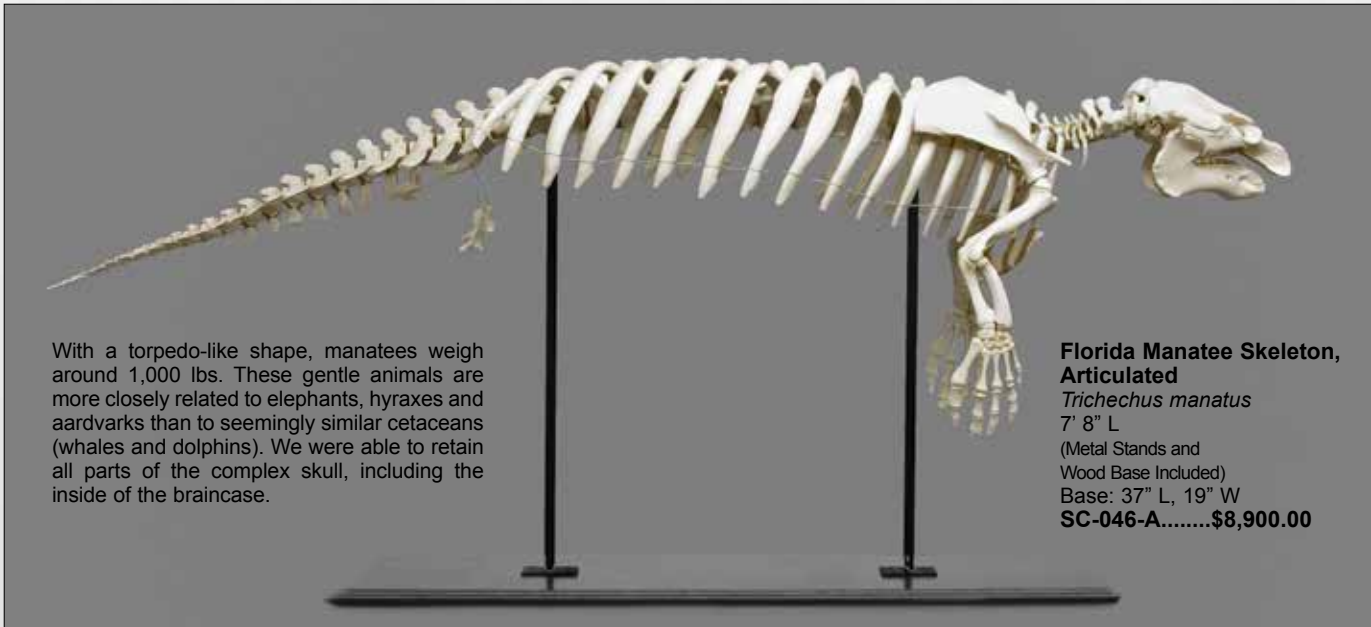


**Fossil Dugong Skeleton, Disarticulated**  
 SC-321-D.....\$10,800.00



**Fossil Dugong Skeleton, Articulated**  
*Metaxytherium floridanum*  
 7-9.5 mya. This extinct sirenian was found in the phosphate mines of Florida in 1978. Its modern relatives are the manatees and dugongs.  
 9' 10" L  
 (Stands Included, Base Not Included)  
 SC-321-A.....\$15,000.00





With a torpedo-like shape, manatees weigh around 1,000 lbs. These gentle animals are more closely related to elephants, hyraxes and armadillos than to seemingly similar cetaceans (whales and dolphins). We were able to retain all parts of the complex skull, including the inside of the braincase.

**Florida Manatee Skeleton, Articulated**  
*Trichechus manatus*  
 7' 8" L  
 (Metal Stands and Wood Base Included)  
 Base: 37" L, 19" W  
**SC-046-A.....\$8,900.00**

**Manatee Flipper (Forelimb) Set**  
 32 1/4" L  
**KO-146.....\$315.00**

---

**Manatee Scapula**  
 11 1/2" L  
**KO-146-S .....\$110.00**

**Manatee Humerus**  
 8" L  
**KO-146-B .....\$99.00**

**Manatee Flipper, Articulated**  
 Includes radius and ulna.  
 12 3/4" L  
**KO-146-H .....\$155.00**

**Florida Manatee Skull**  
 13" L, 8 1/2" W, 7 1/2" H  
**BC-046 .....\$385.00**

**Florida Manatee Skeleton, Disarticulated**  
**SC-046-D.....\$7,700.00**

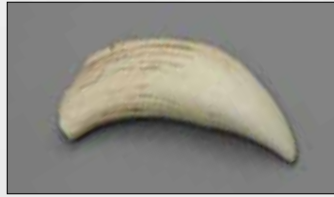




**False Killer Whale Tooth**  
*Pseudorca crassidens*  
 2 ½" L  
 KO-244...\$12.50



**Killer Whale Tooth**  
*Orcinus orca*  
 4" L  
 KO-012...\$15.00



**Modern Sperm Whale Tooth**  
*Physeter catodon*  
 8" L  
 KO-213...\$39.00



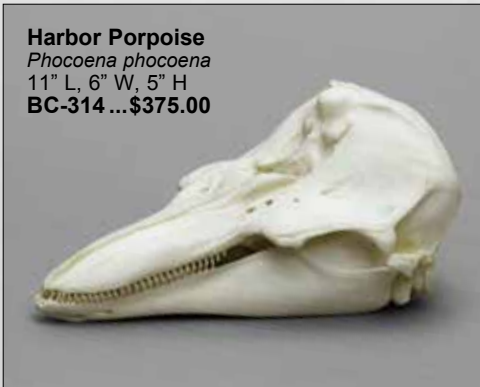
**Seal Forelimb**  
*Phoca vitulina*  
 KO-285...\$290.00



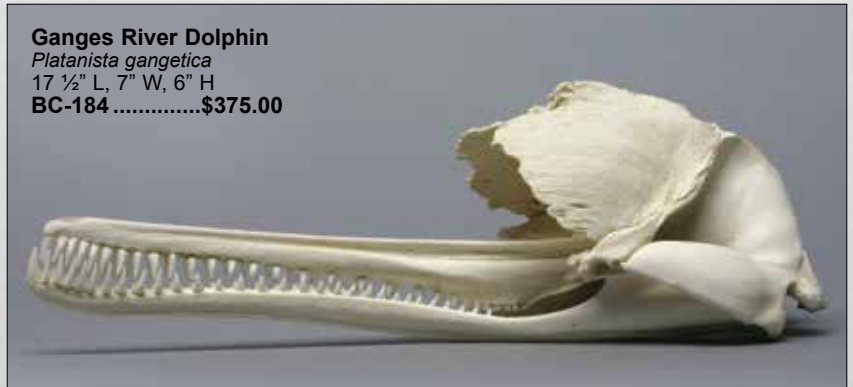
**Sea Otter** *Enhydra lutris*  
 6" L, 4 ½" W, 3" H  
 BC-014 .....\$164.00



**Harbor Seal** *Phoca vitulina*  
 8" L, 5" W, 4" H  
 BC-085 .....\$185.00



**Harbor Porpoise**  
*Phocoena phocoena*  
 11" L, 6" W, 5" H  
 BC-314 ...\$375.00



**Ganges River Dolphin**  
*Platanista gangetica*  
 17 ½" L, 7" W, 6" H  
 BC-184 .....\$375.00



**Right Whale Half Pelvis and Femur**  
*Eubalaena glacialis*  
 7" L x 6 ½" W  
 KO-096...\$68.00



**False Killer Whale**  
*Pseudorca crassidens*  
 23" L, 13 ½" W, 13 ½" H  
 BC-044 .....\$590.00





**Narwhal Tusks**  
*Monodon monoceros*  
 (Base Included)  
 7 1/2" H, 2" W  
**KO-256.....\$539.00**  
 6' H, 2 1/4" W  
**KO-254.....\$439.00**



**Walrus Baculum, Pathology**  
 Shows pathological details of a broken penile bone that healed.  
 21" L  
**KO-215.....\$75.00**



**Walrus Baculum, Straight**  
 The penile bone is called an oosik in Alaska.  
 24" L  
**CFM-05.....\$100.00**



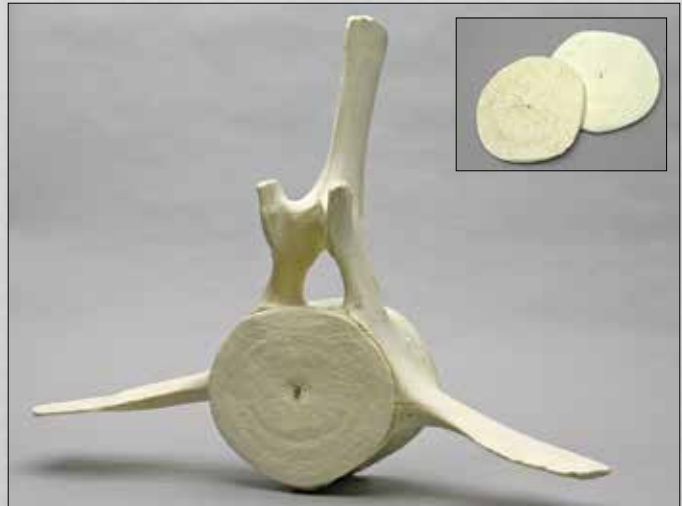
**Walrus Skull with Tusks**  
*Odobenus rosmarus*  
 Removable tusks.  
 26 3/4" L, 9 3/4" W, 7 1/2" H  
**BC-108 .....\$525.00**



**Walrus Tusks, Pair**  
 Tusks from walrus skull, BC-108.  
 26" L  
**KO-031 .....\$325.00**

**Walrus Tusk, Single**  
 Individual Walrus Tusk. 26" L  
**KO-031S.....\$180.00**

**Walrus Tusk, Giant**  
 Single tusk, 34" L  
**KO-032.....\$290.00**



**Humpback Whale Thoracic Vertebra and Intervertebral Discs**  
*Megaptera novaeangliae*  
 11 1/2" L, 33" W, 26 H"  
**KO-255.....\$650.00** (Vertebra with Removable Discs)  
**KO-255-ND.....\$490.00** (Vertebra Only, No Discs)  
**KO-255-DISC.....\$105.00** each (Disc Only)

**1. Stingray Jaw**

*Dasyatis* sp.

6 1/2" W, 4 1/2" H

**BC-230 .....\$145.00**

**2. Sandbar Shark Jaw**

*Carcharhinus plumbeus*

11" W, 9 1/2" H

**BC-231 .....\$240.00**

**3. Zebra Bullhead Shark Jaw**

*Heterodontus zebra*

3 3/4" W, 3 3/4" H

**BC-232 .....\$115.00**

**4. Kitefin Shark Jaw**

*Dalatias licha*

4 1/2" W, 3 1/2" H

**BC-233 .....\$125.00**

**5. Shark Ray Jaw**

*Rhina ancylostoma*

7 3/4" W, 5 1/4" H

**BC-234 .....\$125.00**

**6. Sharpnose Sevengill Shark Jaw**

*Heptranchias perlo*

5 1/4" W, 3 1/2" H

**BC-235 .....\$125.00**

**7. Shortfin Mako Shark Jaw**

*Isurus oxyrinchus*

9 1/4" W, 10" H

**BC-236 .....\$240.00**

**8. Zebra Shark Jaw**

*Stegostoma fasciatum*

4 1/2" W, 3" H

**BC-237 .....\$125.00**

**9. Bat Ray Jaw**

*Myliobatis californicus*

4" W, 5" H

**BC-238 .....\$115.00**

**10. Port Jackson Shark Jaw**

*Heterodontus portusjacksoni*

5 3/4" W, 5 3/4" H

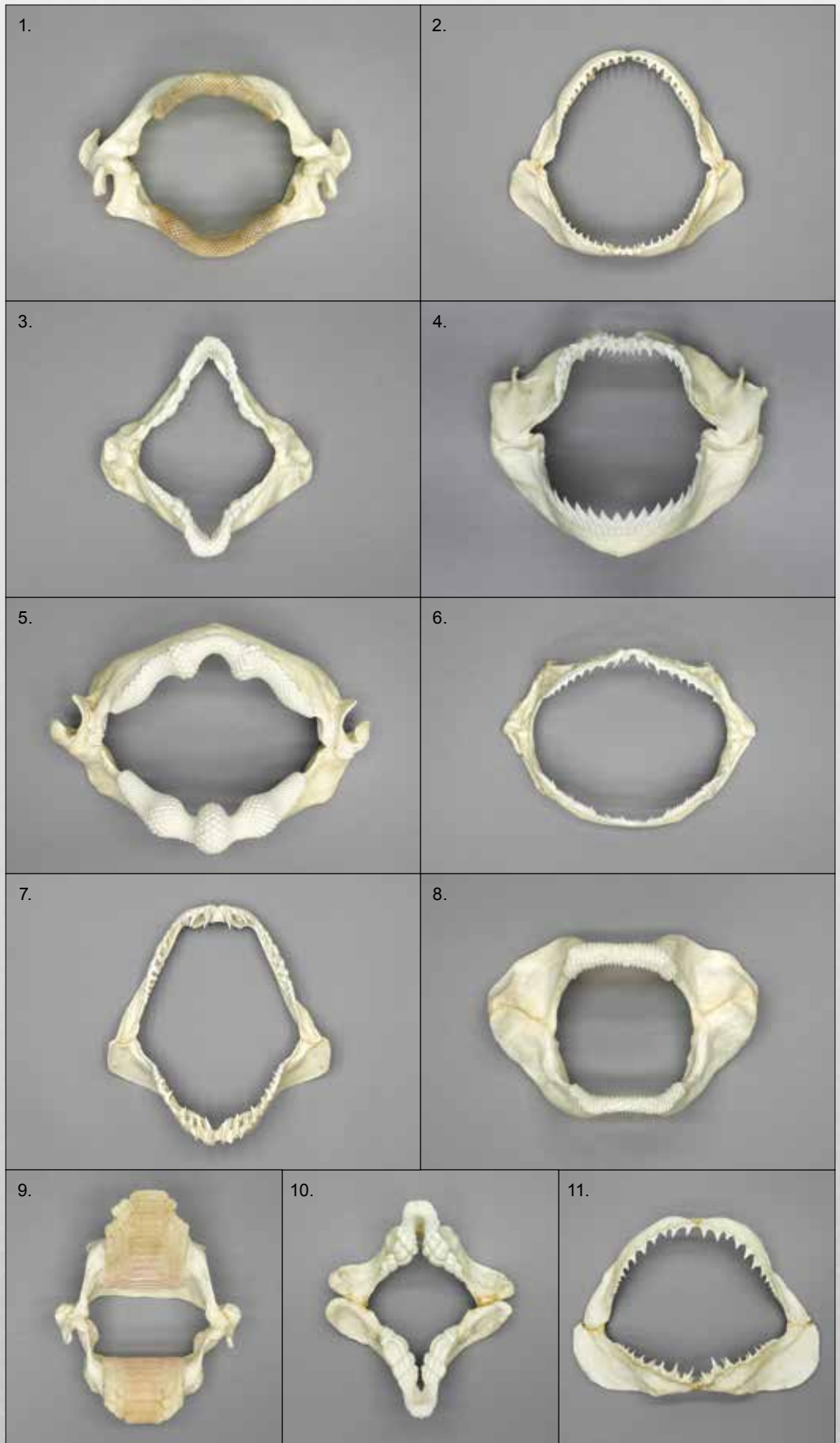
**BC-250 .....\$145.00**

**11. Great White Shark Jaw**

*Carcharodon carcharias*

9 1/4" W, 6 1/2" H

**BC-249 .....\$240.00**





**Giant Squid Beak**  
*Architeuthis dux*  
 2 ½" L, 1 ¾" W, 2 ¼" H  
 KO-222 ..... \$95.00



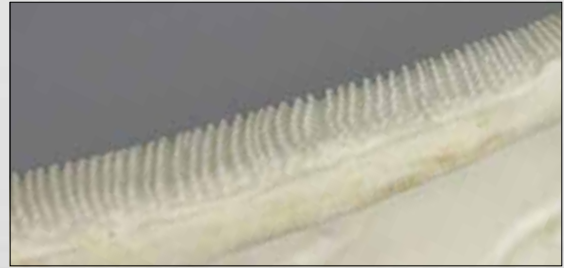
**Stingray Tail Spine**  
*Dasyatis* sp.  
 8 ½" L  
 KO-098 ..... \$39.00



**Tambaqui (Stand Included)**  
*Colossoma macropomum*  
 7 ¾" L, 4 ¼" W, 6" H  
 BC-120 ..... \$295.00



**Tiger Shark Jaw**  
*Galeocerdo cuvier*  
 12" W, 9 ½" H  
 BC-309 ..... \$325.00



**Whale Shark Jaw**  
*Rhincodon typus*  
 As the largest fish in the ocean, it's ironic that the whale shark would choose the smallest organisms, plankton, as its main nutritional source. It uses about 5,000 tiny teeth to filter feed. These sharks can open their jaws to over three feet wide to maximize feeding. The largest recorded whale shark was forty feet in length.  
 37 ½" W, 28" H  
 BC-307 ..... \$750.00



**Coelacanth Life Cast**  
*Latimeria chalumnae*  
 The coelacanth was thought to have become extinct 65-80 mya. That is, until it was rediscovered in the Indian Ocean in 1938. Often called a "living fossil," this lobe-finned fish is considered one of the most significant zoological discoveries of the 20th century. The coelacanth and the lungfish are the only extant lobe-finned fish; primitive lobe-finned fish are thought to have evolved into tetrapods, four-limbed vertebrates.  
 51" Long (Stand and Base Included)  
 LC-239 ..... \$5,000.00



Stands sold separately



**Great White Shark Jaw** *Carcharodon carcharias*

The original was prepared by Dr. Gordon Hubbell, a leading researcher in sharks, who estimates this shark to have been a 19 ½ ft. long female. It contains 230 teeth. Requires special crating and shipping, not included in price.

36 ¼" W, 28 ½" H, 21" jaw opening.

BC-095 ..... \$2,590.00 (Stand Not Included)

**Table-top Stand and Base for Great White Jaw**

S-BC-095-1 ..... \$190.00 (Stand Only)

**Floor Stand for Great White Jaw**

S-BC-095-2 ..... \$190.00 (Stand Only)



**Great White Shark Teeth, Set of 46**

A full first row, containing 46 teeth, mounted in a glass-fronted Riker box.

KO-009 ..... \$300.00



**Great White Shark Tooth**

The largest tooth from our jaw, BC-095. 2 ½"

KO-223 ..... \$8.50



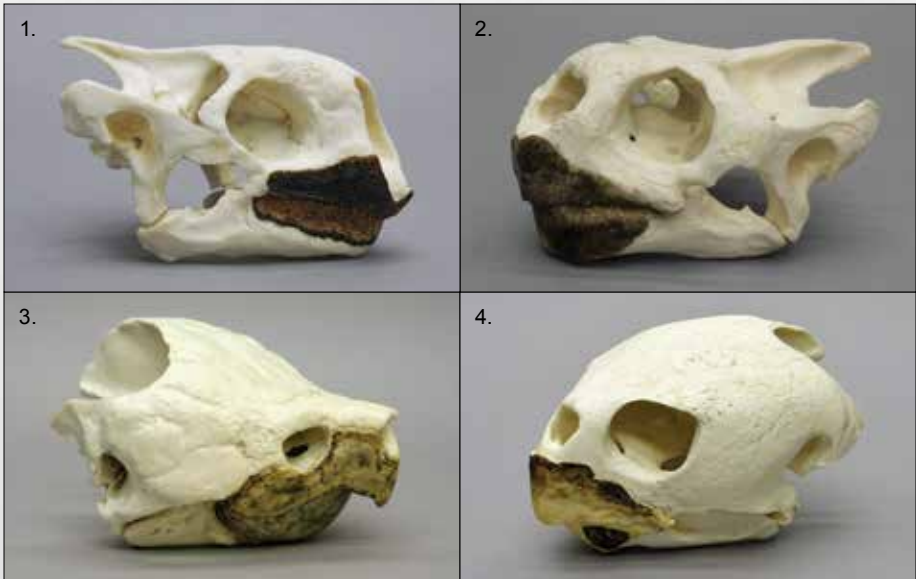
[www.boneclones.com](http://www.boneclones.com)



Bone Clones Osteological Reproductions

GREAT WHITE SHARK JAW

47



**Tuatara**  
*Sphenodon punctatus*  
 2 1/2" L, 2" W, 1 1/4" H  
**BC-028 .....\$130.00**



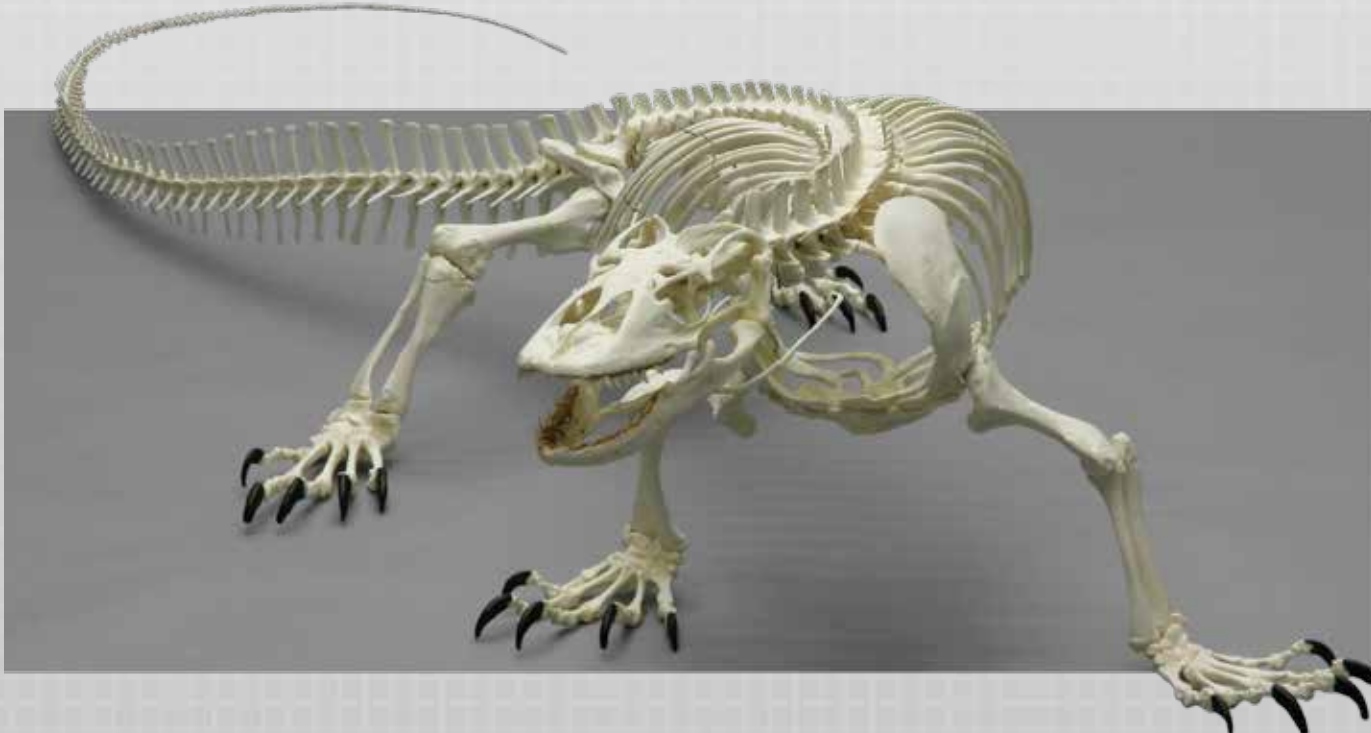
**Parson's Chameleon**  
*Chamaeleo parsonii*  
 3 1/4" L, 1 1/2" W, 1 3/4" H  
**BC-138 .....\$70.00**

**1. Aldabra Tortoise Skull**  
*Geochelone gigantea*  
 5 3/4" L, 3 3/4" W, 3 1/4" H  
**BC-318 .....\$215.00**

**2. Galapagos Tortoise Skull**  
*Geochelone nigra*  
 6 3/4" L, 5" W, 3 1/2" H  
**BC-317 .....\$215.00**

**3. Alligator Snapping Turtle**  
*Macrochelys temminckii*  
 8 3/4" L, 7 1/4" W, 5 1/4" H  
**BC-271 .....\$225.00**

**4. Loggerhead Sea Turtle**  
*Caretta caretta*  
 11 1/4" L, 8" W, 6 1/2" H  
**BC-064 .....\$240.00**



**Komodo Dragon Skeleton, Articulated**  
*Varanus komodoensis*  
 The largest lizard living today. 10' long  
**SC-027-A..... \$4,400.00**

**Komodo Dragon Skeleton, Disarticulated**  
**SC-027-D..... \$3,000.00**



**Komodo Dragon Skull**  
 8 3/4" L, 4 1/2" W, 3 1/4" H  
**BC-027 .....\$245.00**

**Komodo Dragon Claw**  
 2" L  
**KO-002 .....\$9.50**

**1. Moloch (Life Cast)**

*Moloch horridus*

5" L

**CTOM-01 .....\$190.00**

**2. Shingleback (Life Cast)**

*Tiliqua rugosa*

13" L

**CTOM-02 .....\$240.00**

**3. Gila Monster (Life Cast)**

*Heloderma suspectum*

19" L (Along the Curve)

**LC-270 .....\$280.00**

**4. Gaboon Viper**

*Bitis gabonica rhinoceros*

This African snake has the largest head and the longest fangs of any venomous snake.

3 3/4" L, 2 1/2" W, 4" H (Stand Included)

**BC-121 .....\$195.00**

**5. King Cobra**

*Ophiophagus hannah*

This is the largest of all the cobras, reaching a length of 18 feet.

3" L, 2 1/2" W, 2" H (Stand Included)

**BC-179 .....\$195.00**

**6. Black Mamba**

*Dendroaspis polylepis*

2 1/2" L, 1" W, 1 1/2" H (Stand Included)

**BC-329 .....\$195.00**

**7. Python**

*Python reticulatus*

5 1/2" L, 3" W, 2 1/2" H

**BC-118 .....\$215.00**

**8. Gila Monster**

*Heloderma suspectum*

3" L, 2 1/2" W, 1 1/2" H

**BC-006 .....\$130.00**

**9. Anaconda**

*Eunectes murinus*

5 3/4" L, 4" W, 3" H

**BC-119 .....\$215.00**

**10. Chinese Giant Salamander**

*Andrias davidianus*

4 3/4" L, 4 3/4" W, 1 1/2" H

**BC-122 .....\$110.00**



**Goliath Frog Skeleton, Articulated**

*Conraua goliath*

From West Africa's cascading mountain streams, this is the largest frog in the world. The goliath frog, weighing over 7 pounds, with a body length of 12 1/2 inches (measuring over 3 feet from nose to toe), has a 10-foot leap. This particular individual is reported to be of record size with a body length of 12 1/2".

**SC-094-A .....\$525.00**

**Goliath Frog Skeleton, Disarticulated**

**SC-094-D .....\$420.00**

**Goliath Frog Skull**

4" L, 4 1/2" W, 2" H

**BC-094 .....\$95.00**



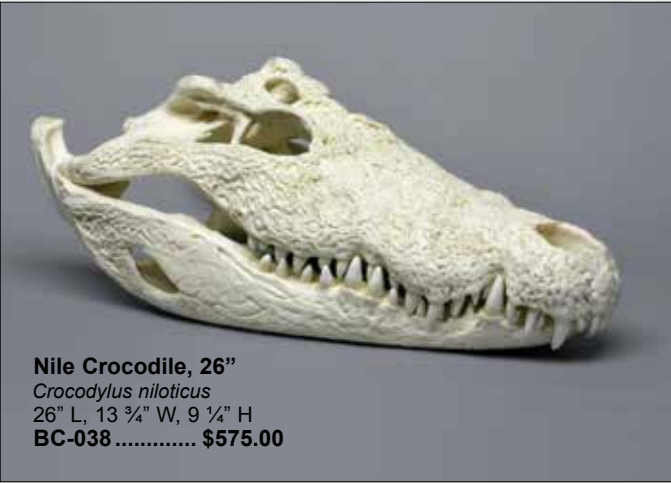
**Stands Available for Select Skulls**



**Saltwater Crocodile,**  
*Crocodylus porosus*  
6 1/2" L, 2 1/2" W, 1 3/4" H  
**BC-278 ..... \$155.00**



**Dwarf Crocodile**  
*Osteolaemus tetraspis*  
Smallest of the crocodylians.  
8" L, 5" W, 3 1/2" H  
**BC-009 ..... \$165.00**



**Nile Crocodile, 26"**  
*Crocodylus niloticus*  
26" L, 13 3/4" W, 9 1/4" H  
**BC-038 ..... \$575.00**



**Nile Crocodile Tooth**  
4 3/4" L  
**KO-159.....\$15.00**

**Nile Crocodile, 30"**  
*Crocodylus niloticus*  
30" L, 16" W, 10 1/4" H  
**BC-273 ..... \$750.00**



**Saltwater Crocodile**  
*Crocodylus porosus*  
32" L, 16" W, 10 1/4" H  
**BC-229 ..... \$775.00**

Stand sold separately  
**S-BC-229 ..... \$225.00**



**American Crocodile**  
*Crocodylus acutus*  
32" L, 13 1/2" W, 8" H  
**BC-272 ..... \$690.00**



## Alligators and Crocodiles



**American Alligator, 12"**  
 11 1/2" L, 5 1/4" W, 3 1/2" H  
**BC-105 .....\$210.00**



**American Alligator, 20"**  
 20" L, 9" W, 6" H  
**BC-129 .....\$350.00**



**American Alligator Tooth**  
 3 3/4" L  
**KO-160 ..... \$15.00**

**American Alligator, 29 1/2"**  
*Alligator mississippiensis*  
 29 1/2" L, 14 3/4" W, 9 1/4" H  
**BC-262..... \$685.00**



**Gavial**  
*Gavialis gangeticus*  
 From India, also known as the gharial,  
 this species grows up to 20 feet long.  
 29 1/4" L, 9 1/2" W, 5 1/4" H  
**BC-045 .....\$575.00**



# FOSSILS

**Sabertooth Cat,  
Smilodon Skeleton,  
Tarpit, Articulated**

*Smilodon fatalis (californicus)*  
A full skeleton (231 pieces)  
of the majestic sabertooth cat  
(*Smilodon fatalis*) from the La  
Brea Tar Pits and Museum in  
Los Angeles. Licensed to Bone  
Clones by the ©Natural History  
Museum of Los Angeles County.  
(Stand Included)  
67" L, 20" W, 53" H  
**SC-018T-A.....\$7,800.00**

**Sabertooth Cat,  
Smilodon Skeleton,  
Tarpit, Disarticulated**

(Not Shown)  
**SC-018T-D.....\$5,500.00**

**Sabertooth Cat,  
Smilodon Skeleton,  
Antique, Articulated**

(See Page 66)  
**SC-018A-A.....\$6,800.00**

**Sabertooth Cat,  
Smilodon Skeleton,  
Antique, Disarticulated**

(Not Shown)  
**SC-018A-D.....\$4,800.00**



**Sabertooth Cat,  
Smilodon Skull, Tarpit Finish**

*Smilodon fatalis (californicus)*  
Sabers are removeable.  
(Stands Sold Separately)  
13 3/4" L, 8 1/4" W, 6 1/4" H  
**BC-018T .....\$309.00**

**Smilodon, Antique Finish**

(See Page 66)  
**BC-018A..... \$295.00**

**Saber, Single or Pair, 11"**  
KO-212 ..... \$28.00  
KO-212-P ..... \$55.00





**American Lion, Tarpit Finish**

*Panthera atrox*

This 14,000 year old fossil was found at the La Brea Tar Pits and Museum, and was licensed to Bone Clones by the ©Natural History Museum of Los Angeles County.

(Stand Sold Separately)

17 3/4" L, 11 1/2" W, 8 1/4" H

**BC-019T .....\$435.00**

**American Lion, Antique Finish**

**BC-019A.....\$395.00**



**Cave Lion**

*Panthera spelaea*

From the North American Ice Age, a relative of the present day african lion.

(Stand Sold Separately)

15 1/4" L, 9 3/4" W, 7 1/4" H

**BC-104 .....\$440.00**



**Sabertooth Cat, Deluxe Smilodon, Tarpit**

Found in the 1930's across the street from the La Brea Tar Pits, this individual is remarkable in that it has its septum intact and has virtually no reconstruction. The sabers are complete and removable.

(Stand Sold Separately)

14" L, 8 1/2" W, 6 1/2" H

**BC-067T .....\$320.00**

**Deluxe Smilodon Sabers (PR.)**

Pair, 10 1/2" L

**KO-067P.....\$50.00**

**Sabertooth Cat, Deluxe Smilodon, Antique**

**BC-067A.....\$300.00**



**Sabertooth Cat, South American**

*Smilodon populator*

(Stand Sold Separately)

13 3/4" L, 8 1/4" W, 6 3/4" H

**BC-103 .....\$310.00**

**Sabertooth Cat, South American Sabers (Pair)**

Matched pair. Also available as a single saber.

12" L

**KO-103P.....\$40.00**

**KO-103 .....\$22.00**



**Sabertooth Cat, Dinictis**

*Dinictis felina*

Approximately 35 million years old, this rare specimen is from the Brule Formation in South Dakota.

(Stand Included)

7" L, 4 1/4" W, 3 3/4" H

**BC-030 ..... \$230.00**

Stands Available  
\$45.00 each



The Babiarez Institute of Paleontological Studies, Inc. has one of the finest collections of fossil cats. Bone Clones has replicated quite a few excellent examples from their collection, including the rare *Xenosmilus* skeleton.



**Sabertooth Cat, Homotherium**  
*Homotherium cf. crenatidens*  
(3 MYA)  
14" L, 5" W, 7" H  
CB-06 ..... \$390.00

**Sabertooth Cat, Chinese**  
**Megantereon nihowanensis**  
*Megantereon cultridens*  
(*nihowanensis*)  
(6-9 MYA)  
10 3/4" L, 4 3/4" W, 5 1/2" H  
BC-106 ..... \$350.00

**Ancestral Tiger**  
*Panthera zdanskyi* (2 MYA)  
10 1/2" L, 5" W, 5 3/4" H  
BC-294 ..... \$475.00

**Sabertooth Cat, Chinese**  
*Machairodus giganteus* (4.5-5 MYA)  
14" L, 7 1/2" W, 6 3/4" H  
BC-102 ..... \$350.00

**Right Saber** (Not Shown) 8"  
CB-06-S ..... \$32.00

Stands Sold Separately \$38.00-\$45.00 each



**Sabertooth Cat, Hoplophoneus**  
*Hoplophoneus occidentalis*  
(33-30.5 MYA)  
11" L, 5" W, 5 1/2" H  
CB-18 ..... \$325.00

**Sabertooth Cat, Chinese**  
**Megantereon #2**  
*Megantereon nihowanensis*  
(6 - 9 MYA)  
10" L, 4 1/2" W, 5 1/2" H  
CB-20 ..... \$320.00

**Sabertooth Cat, Juvenile**  
*Machairodus giganteus*  
(4.5 to 5 MYA)  
8 1/2" L, 5" W, 3 3/4" H  
BC-117 ..... \$370.00

**Sabertooth Cat, Eusmilus**  
*Eusmilus sicarius*  
(25.5-30.5 MYA)  
7 1/2" L, 3 1/2" W, 3 3/4" H  
CB-07 ..... \$300.00



**Sabertooth Cat, Xenosmilus Skull**  
13 1/4" L, 7" W, 6 1/2" H  
BC-113 ..... \$475.00

**Sabertooth Cat, Xenosmilus Skeleton, Articulated**  
*Xenosmilus hodsonae*  
Pleistocene (Irvingtonian) (1-1.7 MYBP)  
64" L, 21" W, 42" H (Stand Included)  
SCB-012-A ..... \$9,000.00

**Skeleton, Disarticulated**  
SCB-012P-D ..... \$6,500.00



**Short-faced Bear, Articulated, Upright**

*Arctodus simus* became extinct 11,000 years ago. This individual (found in Alaska) died 28,000 years ago. Both upright and quadruped versions are available, as are all postcranial parts. Please inquire.

(Stand and Base Included)

10' tall

**SC-114-A..... \$19,000.00**

**Short-faced Bear, Articulated, Quadruped Position** (Stands Included)

9' L, 3 1/2' W (On Base), 4 1/2' H

**SC-114-AQ..... \$19,000.00**

**Short-Faced Bear, Disarticulated**

**SC-114-D..... \$14,500.00**



**1. Short-faced Bear Femur**  
25" L  
**KO-114F..... \$460.00**

**2. Short-faced Bear Paw**  
14 1/2" L  
**KO-114W..... \$350.00**

**3. Short-faced Bear Canines, Pair**  
**KO-115P..... \$65.00**

**Short-faced Bear Canine, Single** (Not Shown) 5"  
**KO-115S..... \$35.00**

**4. Short-faced Bear Skull**  
Removable upper canines.  
(Stand Sold Separately)  
19" L , 12 1/2" W, 12" H  
**BC-114..... \$575.00**





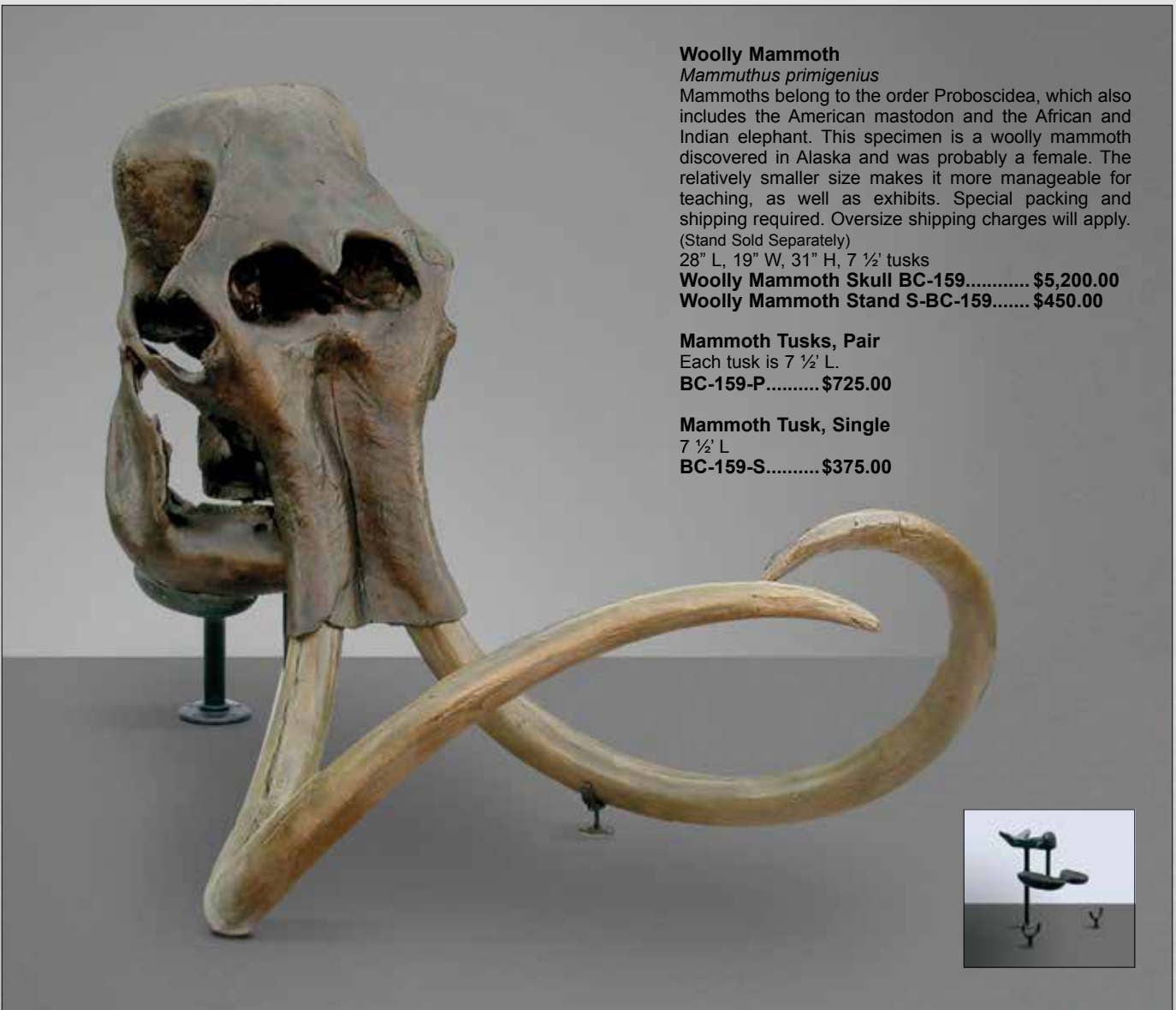
**Giant Fossil Hyena**  
*Dinocrocuta gigantea*  
 17 1/2" L, 10 1/2" W, 11" H  
**BC-223 ..... \$425.00**



**Fossil Giant Beaver, Tarpit**  
*Castoroides ohioensis*  
 12" L, 9" W, 8" H  
**BC-071T ..... \$325.00**  
**BC-071A..... \$295.00 (Antique Finish)**



**Dire Wolf, Tarpit**  
*Canis dirus*  
 12 1/2" L, 6 1/2" W, 6 1/2" H  
**BC-020T ..... \$249.00**  
**BC-020A..... \$230.00 (Antique Finish)**



**Woolly Mammoth**  
*Mammuthus primigenius*  
 Mammoths belong to the order Proboscidea, which also includes the American mastodon and the African and Indian elephant. This specimen is a woolly mammoth discovered in Alaska and was probably a female. The relatively smaller size makes it more manageable for teaching, as well as exhibits. Special packing and shipping required. Oversize shipping charges will apply. (Stand Sold Separately)  
 28" L, 19" W, 31" H, 7 1/2' tusks  
**Woolly Mammoth Skull BC-159..... \$5,200.00**  
**Woolly Mammoth Stand S-BC-159..... \$450.00**

**Mammoth Tusks, Pair**  
 Each tusk is 7 1/2' L.  
**BC-159-P..... \$725.00**

**Mammoth Tusk, Single**  
 7 1/2' L  
**BC-159-S..... \$375.00**





**Mosasaur Skull and Neck**  
*Platecarpus planifrons*  
 Lived approximately 86 MYA.  
 22" L, 5 3/4" W, 6" H  
 BC-160-N.....\$725.00

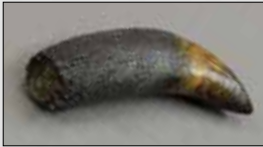
**Mosasaur Skull**  
 15" L, 5" W, 6" H  
 BC-160 .....\$525.00



**Thoosuchus** *Thoosuchus* sp.  
 This 230 million-year-old amphibian superficially resembles modern crocodilians except it has palatine teeth like modern amphibians.  
 5" L, 3 1/4" W, 1" H  
 BC-040 ..... \$60.00



**Cynodont (Sculpture)**  
*Probainognathus jenseni*  
 3 1/2" L, 2 1/2" W, 1 1/2" H  
 CD-01 ..... \$179.00



**Sarcosuchus Tooth, 6" L**  
 KO-156 .....\$32.00

**Sarcosuchus Skull**  
*Sarcosuchus imperator*  
 Living during the Cretaceous period (65-144 MYA), the "Supercroc" had an estimated body length of 40 feet, and a skull over 5 1/2 feet long. Shown here with full size human skull.  
 68" L, 35" W, 17" H  
 BC-156 .....\$6,200.00



**Gavialosuchus**  
*Gavialosuchus americanus*  
 51 1/4" L, 19 3/4" W, 11 1/2" H  
 BC-130 .....\$2,500.00





**Megalodon Shark Jaw, Assembled**

*Carcharocles megalodon*

**BC-295-A3 ..... \$24,000.00**

**BC-295-A4 ..... \$26,000.00**

**BC-295-A5 ..... \$27,000.00**

(Stands Included)

101" W, 78" H, Jaw opening: 56 1/2" W with 3-5 rows of 46 teeth per row.

The megalodon shark inhabited the warm coastal waters of the world approximately 17 million years ago to about 2 million years ago. The specimens from which these teeth came are estimated to have lived about 10 MYA. The teeth of the megalodon are similar in shape to those of the modern great white shark, *Carcharodon carcharias*, but are much larger and thicker and have finer serrations. Both *C. megalodon* and *C. carcharias* had a common boundary, although research suggests the great white frequented the cooler waters while megalodon was found in warmer waters. Sometime following the Pliocene, as the ocean currents changed and the waters cooled, the now infamous *C. megalodon* shark became extinct. The enormous size of the fossil teeth is reflected in the body size, with that of megalodon approaching 60' in length, while the largest recorded modern great white measured 19' 6". All the teeth (230 in the 5-row version) are cast from original megalodon teeth and painstakingly secured to the jaw frame one by one. The metal stands, as shown, are included along with a schematic of the layout. We are grateful to Babiartz Institute of Paleontological Studies for lending us the original teeth which they selected with meticulous care.







**Megalodon Shark Teeth, Set of 46, Large *Carcharocles megalodon***  
(Unmounted)  
**CB-11-46P.....\$1,850.00**



**Megalodon Shark Teeth, Set of 46**  
Miocene Era (10 MYA). This beautiful set of 46 teeth, from the collection of Dr. Gordon Hubbell, is the most complete set of associated megalodon teeth ever found. The unusual color is due to the phosphate mine where it was found. (Unmounted)  
**CH-31-46P..... \$1,650.00**



**Whorl Tooth Shark  
Teeth in Matrix**

*Helicoprion bessonowi*  
Very little is known about this unusual shark, except that the front teeth grew in a spiral, containing up to 180 teeth. This particular specimen contains 131 teeth, and is the holotype.  
10" L, 9" W, 1" H  
**KO-001.....\$145.00**



**Megalodon Shark Teeth, Set of 4, Large**  
A savings when purchased as a set.  
**KO-008-SET.....\$275.00**



**Megalodon Shark Tooth** 6 3/4" L  
**KO-008-3.....\$80.00**

**Megalodon Shark Tooth** 5 1/2" L  
**KO-218.....\$60.00**



**Megalodon Shark Tooth**  
This tooth is considered by many to be the largest megalodon tooth ever found and documented.  
7 1/8" L  
**KO-008.....\$80.00**

**Megalodon Shark Tooth**  
An extremely large and beautiful representation of the megalodon shark tooth.  
7" L  
**KO-008-2.....\$80.00**



## Mammoth and Mastodon Teeth

Mammoths and mastodons belong to the order Proboscidea, which also includes the African and Indian elephants. The mastodon's teeth have cone-shaped cusps and are built for chewing leaves, twigs and other plant species. The teeth of the mammoth have long ridges, suitable for grinding grass. As is the case with all Proboscideans, a worn down set of teeth would be replaced by another, for a total of six sets during their lifetime. See page 38 for modern elephant teeth.



**Columbian Mammoth Molar**  
*Mammuthus columbi*  
8" L, 3 1/2" W, 7 1/4" H  
KO-198.....\$180.00



**Woolly Mammoth Molar**  
*Mammuthus primigenius*  
7 1/2" L, 2 1/2" W, 6" H  
KO-197.....\$150.00



**Mastodon Molar**  
*Mammut americanum*  
4 1/2" L, 4 1/4" W, 4 3/4" H  
KO-158.....\$95.00



**Mastodon Molar**  
*Mammut americanum*  
8" L, 4 1/4" W, 6 1/2" H  
KO-199.....\$160.00

### MASTODON

**Mastodon Femur**  
*Mammut americanum*  
43" L  
KO-502.....\$650.00



**Mastodon Atlas**  
11" H, 19" W, 5" H  
KO-504.....\$375.00



**Mastodon Humerus**  
40" L  
KO-503.....\$650.00



**Mastodon Vertebra**  
29" L  
KO-501.....\$550.00





**Giant Sloth Claw**

*Eremotherium eomigrans*  
 1.4 MYA. Giant sloths weighed up to 6,000 pounds. Despite the size of their very dangerous looking claws, they were probably only used to strip leaves or bark from plants. Examination of their hip bones suggests that they could stand on their hind legs to extend their grazing as high as 20 feet.  
 (Stand Included)  
 23" Along the Curve  
**KO-157-S .....\$215.00**



**Fossil Bison Right Metatarsal**  
 11" L x 3 1/4" W  
**KO-119.....\$180.00**



**Fossil Bison Right Tibia**  
 The right distal tibia displays two deep V-section chopmarks, suggesting blows from a heavy object.  
 6 1/2" L x 3 1/2" W  
**KO-118 .....\$115.00**



**BISON**

Age: 12,000 years (late Pleistocene). Discovered at Ayer Pond, Orcas Island, in the Pacific Northwest in 2003. The skull of this specimen is considered to be one of the finest and largest found to date. With a horn spread of 31 inches, Bone Clones captured all the incredible detail of the original, including the intact nasals.

**Fossil Bison Skull**  
*Bison antiquus*  
 (Stand Included)  
 31" W  
**BC-313-ST.....\$910.00**



**1. Fossil Giant Sperm Whale Tooth**

*Physeter macrocephalus*  
This extinct sperm whale is the largest of the toothed whales and largest predator ever to live, reaching 60' and 45 tons.  
13" Long, 11 3/4" circumference  
**KO-042..... \$165.00**



**2. Fossil Armadillo**

*Holmesina floridanus*  
(1.2-1.8 MYA)  
9 3/4" L, 5 1/4" W, 3 1/2" H  
**BC-214..... \$175.00**



**3. Diplodocus Chevron**

*Diplodocus* sp.  
11" L, 4 1/2" W  
**KO-003..... \$125.00**



**4. Stegosaurus Spike**

*Stegosaurus unguatus*  
One of the largest, most complete and detailed spikes found.  
21" L  
**KO-015..... \$135.00**



**5. Apatosaurus Claw, Rear**

*Apatosaurus* sp.  
Jurassic Age (144 MYA).  
One of three claws from the rear foot. Found in the Morrison Formation in the western U.S.  
12" L  
**KO-063..... \$125.00**



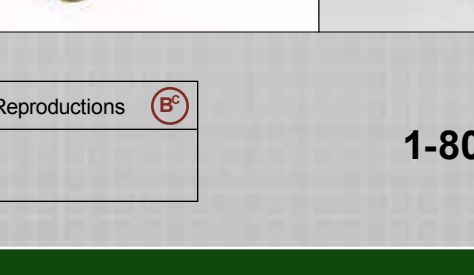
**6. Tarbosaurus bataar Fossil Claw**

*Tarbosaurus bataar*  
This claw is from the Mongolian equivalent of *Tyrannosaurus rex*.  
4 1/2" L  
**KO-073..... \$59.00**



**7. Allosaurus Claw**

*Allosaurus fragilis*  
The largest and most common carnivore found in the large Morrison Formation in the western United States.  
8 3/4" L  
**KO-037..... \$70.00**



**8. Tyrannosaurus rex Claw**

*Tyrannosaurus rex*  
Cast from an original pes or foot claw discovered in the late Cretaceous deposits of the Hell Creek Formation in Montana.  
7" L  
**KO-074..... \$45.00**

**9. Tyrannosaurus rex Tooth**

13 3/4" L  
**KO-039..... \$70.00**

**10. Tyrannosaurus rex 1:9 Scale Sculpted Model**

(Stand Included)  
6 1/2" L, 3 1/2" W, 4 1/2" H  
**CN-01..... \$259.00**



We are grateful to Black Hills Institute of Geological Research (BHIGR) for the opportunity to collaborate on the production of this 1:6 scale version of the *Tyrannosaurus rex* skull (BHI-3033), commonly known as STAN, the most complete and undistorted *T. rex* skull ever found. Thirty-nine individual elements (plus the brain case) were CT scanned; the resulting digital data were then transferred to a 3-D rapid prototype machine that created an exact 1:6 scale replica. This skull preserves every detail including bite marks and tiny foramina from the original five foot long skull, which has been reduced to a mere ten and one-half inches in length. The original skeleton of this Late Cretaceous (66 MYA) specimen, discovered by Stan Sacrison in 1992 and excavated by Black Hills, now resides in the permanent collection of BHIGR in Hill City, South Dakota.



***T. rex* STAN 1:6 Scale, Articulated** (Stand Included)  
10 1/2" L, 6 1/4" W, 8" H  
CN-02-A.....\$870.00



**Tray 1**



**Tray 2**



**Tray 3**



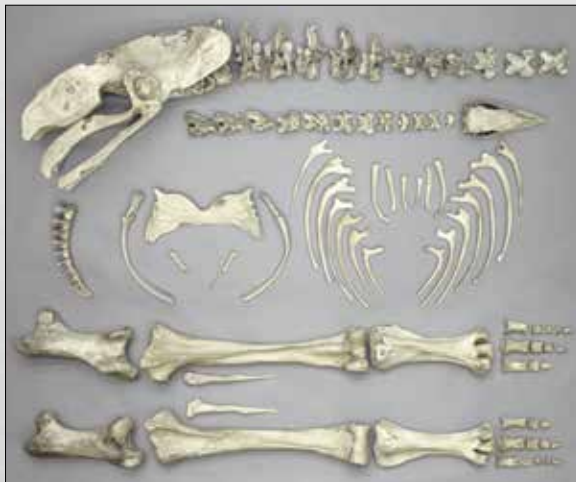
The premium quality hard case was custom-made specifically for this product to allow for convenient storage and transportation. Supplied with either version of the skull is a 12-page packet, which describes the discovery of STAN, provides photographs of each skull bone and includes an extensive report on the cranial morphology of *T. rex*.

***T. rex* STAN 1:6 Scale, Disarticulated** (Case Included)  
CN-02-D.....\$1,300.00

## About the Elephant Bird

The elephant bird is considered the largest bird in history. Possibly existing for nearly 2 million years in Madagascar, it faced extinction by the middle of the 17th century. The ancestors of the elephant bird may have arrived in Madagascar during the Miocene, as early as 24 million years ago. Related to other flightless birds like the ostrich and emu, this heavy-set herbivore measured approximately 10 feet and 1,000 pounds, three times the weight of an 8-foot ostrich. This member of the ratites (flightless birds), was known locally in the 1600's as "vouron patra". These birds were hunted by local inhabitants, and may have been seen by the first Europeans to visit the island. Likely not a fast runner as indicated by the relative lengths of its leg bones, it may have relied on its massive size and pointed beak to defend itself.

Bone Clones offers this skeleton fully articulated as shown, colored to match the original bone as found. Custom mounting is available.



**Elephant Bird,  
Disarticulated**  
SC-241-D.... \$14,400.00

**Elephant Bird Skull**  
12" L, 5" W, 5" H  
BC-241 ..... \$360.00



### Giant Elephant Bird Egg

The elephant bird egg is 15 times larger than an ostrich egg and 10,000 times larger than a hummingbird egg.

(Acrylic Stand Included)

12" L, 9" W

KO-005.....\$209.00



**Elephant Bird Egg and Custom Stand**  
KO-241-SE .....\$690.00

**Elephant Bird Egg Custom Stand Only**  
36"  
KO-241-S .....\$500.00



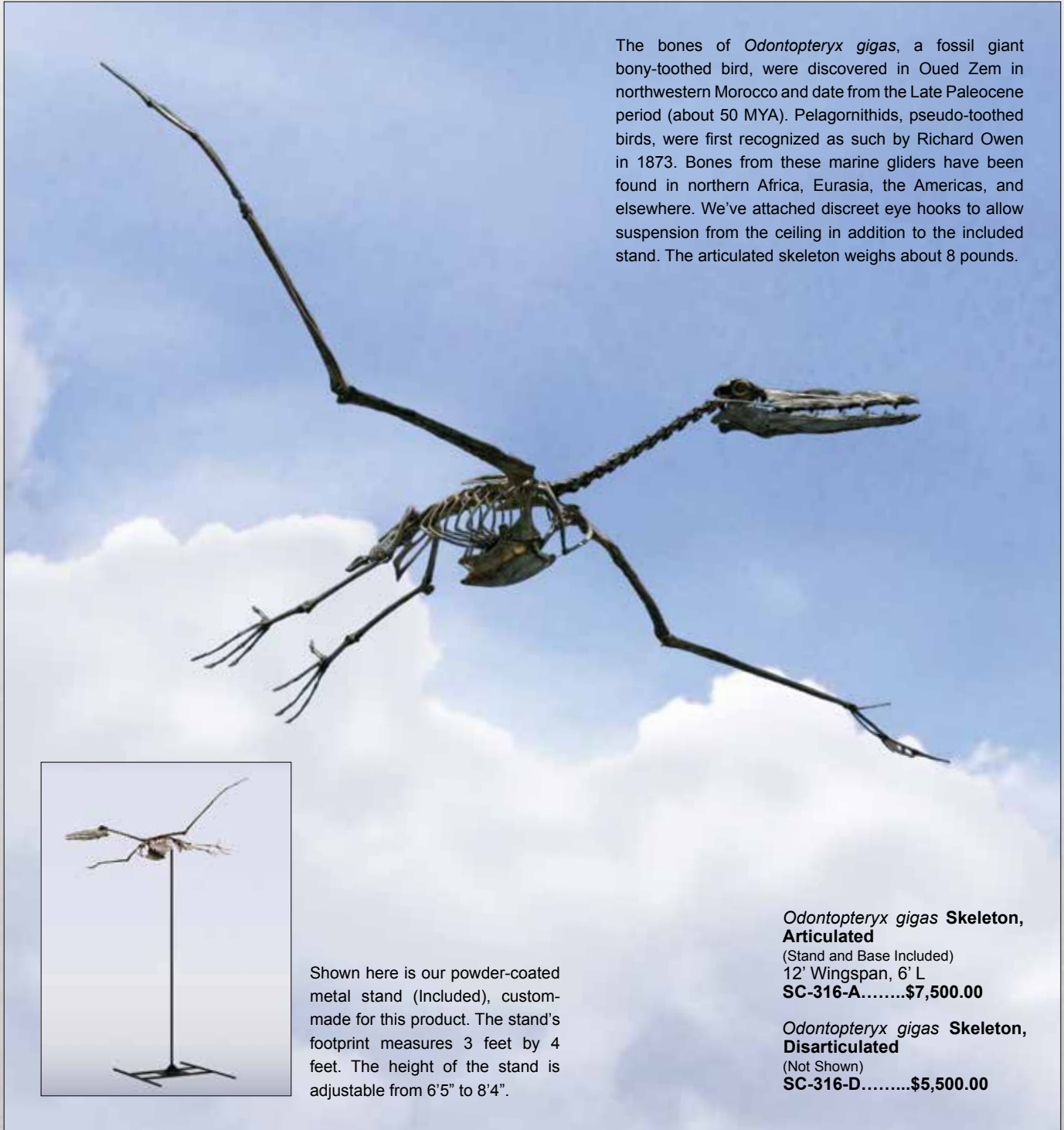
**Elephant Bird Skeleton,  
Articulated**  
*Aepyornis maximus*  
(Stand and Base Included)  
8 1/2' tall  
SC-241-A.....\$18,000.00



**Skull, Articulated**  
*Odontopteryx gigas*  
 19 1/2" L, 4 1/4" W, 5 1/4" H  
**BC-316.....\$1,100.00**

**Skull, Disarticulated**  
 (Not Shown)  
**BC-316-D.....\$900.00**

See our website  
 for photos of the  
 disarticulated  
 skull and  
 skeleton.



The bones of *Odontopteryx gigas*, a fossil giant bony-toothed bird, were discovered in Oued Zem in northwestern Morocco and date from the Late Paleocene period (about 50 MYA). Pelagornithids, pseudo-toothed birds, were first recognized as such by Richard Owen in 1873. Bones from these marine gliders have been found in northern Africa, Eurasia, the Americas, and elsewhere. We've attached discreet eye hooks to allow suspension from the ceiling in addition to the included stand. The articulated skeleton weighs about 8 pounds.



Shown here is our powder-coated metal stand (Included), custom-made for this product. The stand's footprint measures 3 feet by 4 feet. The height of the stand is adjustable from 6'5" to 8'4".

***Odontopteryx gigas* Skeleton, Articulated**  
 (Stand and Base Included)  
 12' Wingspan, 6' L  
**SC-316-A.....\$7,500.00**

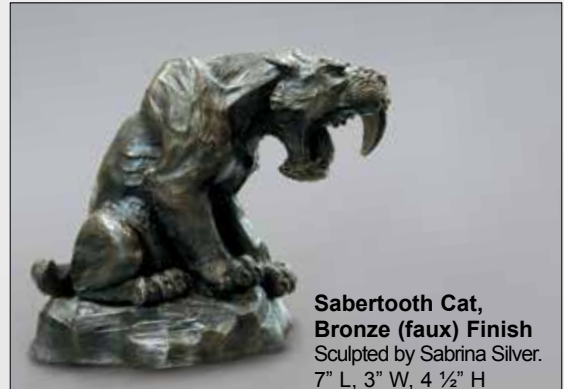
***Odontopteryx gigas* Skeleton, Disarticulated**  
 (Not Shown)  
**SC-316-D.....\$5,500.00**





**Wall-mounted, Large-scale Ape Busts** (Made of Durable Bronze-filled Fiberglass)

<b>Orangutan</b> 20" L, 18" W, 14" H CG-03.....\$2,650.00	<b>Chimpanzee</b> 23" L, 19" W, 13" H CG-01.....\$2,650.00	<b>Gorilla</b> 29" L, 23" W, 15" H CG-02.....\$2,975.00
-----------------------------------------------------------------	------------------------------------------------------------------	---------------------------------------------------------------



**Sabertooth Cat, Bronze (faux) Finish**  
Sculpted by Sabrina Silver.  
7" L, 3" W, 4 1/2" H  
CS-01B.....\$160.00

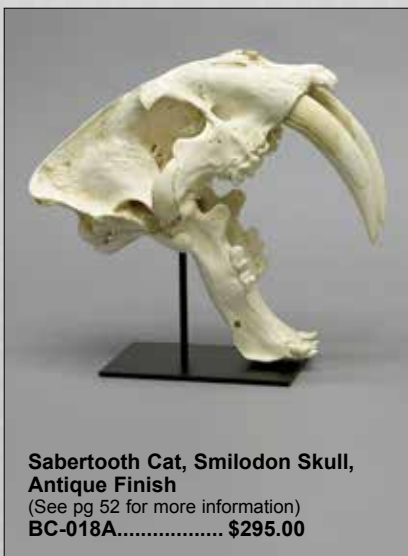
**Ivory (faux) Finish**  
(Not Shown)  
CS-01A.....\$150.00



**African Elephant Sculpture**  
(Base Included)  
Made of bronze-finished resin.  
16 1/2" L, 7" W, 10" H  
CH-35 .....\$1,100.00



**Indian Rhino Sculpture**  
(Base Included)  
Made of bronze-finished resin.  
13" L, 3 1/2" W, 6" H  
CH-34 .....\$500.00



**Sabertooth Cat, Smilodon Skull, Antique Finish**  
(See pg 52 for more information)  
BC-018A..... \$295.00



**Sabertooth Cat, Smilodon Skeleton, Antique, Articulated**  
(See pg 52 for more information)  
SC-018A-A..... \$6,800.00



Aardvark.....	32	Bat, Fruit.....	33	Cat Skulls (fossil).....	52-54	Dire Wolf.....	26, 56
<i>Aceros undulatus</i> .....	8	Bat, Scaled 8:1.....	34	Cat Skulls (modern).....	24-25, 36	Display Bases.....	4
<i>Acinonyx jubatus</i> .....	13, 25	Bat, Vampire.....	34	Cat, Common House.....	25, 36	Doe Deer.....	34, 37
<i>Aepyornis maximus</i> .....	64	Bear Claws.....	12-13, 27	<i>Cathartes aura</i> .....	11	Dog Skulls.....	26
African Elephant.....	38	Bear Skulls.....	27, 37, 55	Cave Bear.....	27	Dolphin, Atlantic Bottlenose.....	40
African Leopard.....	13, 24	Bear, Black.....	12-13, 27, 37	Cave Lion.....	53	Dolphin, Ganges River.....	43
African Lion.....	13, 24-25	Bear, Cave.....	27	Cave Myotis Bat.....	34	Dove.....	11
<i>Alluropoda melanoleuca</i> .....	31	Bear, Grizzly.....	12-13, 27	<i>Cebuella pygmaea</i> .....	21	<i>Dryocopus pileatus</i> .....	7, 9
<i>Ailurus fulgens</i> .....	31	Bear, Kodiak Grizzly.....	27	<i>Cebus olivaceus</i> .....	16	Duck.....	11
Airedale.....	26	Bear, Polar.....	12-13, 27	<i>Ceratotherium simum</i> .....	38	Dugong.....	41
<i>Ajaia ajaja</i> .....	8	Bear, Short-faced.....	55	Chacma Baboon.....	20	Dwarf Crocodile.....	50
Albatross, Black-browed.....	8	Bear, Sloth.....	12-13	<i>Chamaeleo parsonii</i> .....	48	Eagle, Bald.....	2, 6, 11-13
Albatross, Black-footed.....	3, 8	Beaver, American.....	12-13, 36	Chameleon, Parson's.....	48	Eagle, Golden.....	3, 6, 11-13
Aldabra Tortoise.....	48	Beaver, Giant Fossil.....	56	Cheetah.....	13, 25	Eagle, Harpy.....	2, 6-7, 10, 12-13
<i>Alligator mississippiensis</i> .....	51	Bengal Tiger.....	25	Chimpanzee.....	E, 14, 18-19, 22	Eastern Bluebird.....	11
Alligator Snapping Turtle.....	12-13, 48	Bird Eggs.....	4-6, 10-11	Chinese Giant Salamander.....	49	Eastern Screech Owl.....	11
Alligator, American.....	51	Bird Feet.....	10	Chinese Water Deer.....	31	Echidna.....	33
<i>Allosaurus fragilis</i> .....	62	Bird Skeletons.....	2-10	<i>Chlamyphorus truncatus</i> .....	35	Economy Series.....	36-37
<i>Alouatta palliata</i> .....	20	Bird Skulls.....	2-10	<i>Choeropsis liberiensis</i> .....	39	Egg, Bird.....	4-6, 10-11
American Alligator.....	51	Bird Talons.....	5-6, 12-13	<i>Choloepus hoffmanni</i> .....	12-13, 34	Egg, Elephant Bird.....	64
American Badger.....	12-13	Birds of Prey.....	6-7	<i>Chrysocyon brachyurus</i> .....	26	Egg, Platypus.....	33
American Beaver.....	12-13, 36	<i>Bison antiquus</i> .....	61	Claw, Dinosaur.....	62	Egret.....	11
American Crocodile.....	50	<i>Bitis gabonica</i> .....	49	Claw, Giant Sloth.....	61	Elephant.....	38
American Goldfinch.....	11	Black Bear.....	12-13, 27, 37	Claws.....	12-13	Elephant Bird.....	64
American Kestrel.....	7, 11	Black Hornbill.....	8	Clouded Leopard.....	24	Elephant Shrew.....	32
American Lion.....	53	Black Mamba.....	49	Cobra.....	49	<i>Elephantulus rufescens</i> .....	32
American Robin.....	9, 11	Black Rhinoceros.....	38	<i>Coccyzus americanus</i> .....	9	<i>Elephas maximus</i> .....	38
American White Pelican.....	8	Black Spider Monkey.....	16	Coelacanth Life Cast.....	46	English Bulldog.....	26
Amphibians.....	49	Black-browed Albatross.....	8	<i>Colossoma macropomum</i> .....	46	<i>Enhydra lutris</i> .....	43
Anaconda.....	49	Black-footed Albatross.....	3, 8	Colugo.....	32	<i>Equus caballus</i> .....	30
Ancestral Tiger.....	54	Black-footed Ferret.....	34	Columbian Mammoth.....	60	<i>Ereotherium eomigrans</i> .....	61
Andean Condor.....	7	Blue Jay.....	9, 11	Common Armadillo.....	35	<i>Erethizon dorsatum</i> .....	12-13
<i>Andrias davidianus</i> .....	49	Bluebird.....	11	Common House Cat.....	25, 36	<i>Eubalaena glacialis</i> .....	43
<i>Anodorhynchus hyacinthinus</i> .....	8, 10	Bobcat.....	13, 25, 36	Common Loon.....	11	<i>Eudocimus ruber</i> .....	9
Anteater.....	12-13, 35	Bonobo.....	15, 18-19	Common Marmoset.....	21	<i>Eumeces murinus</i> .....	49
<i>Anthracoceros malayanus</i> .....	8	Bornean Orangutan.....	18-19	Common Snipe.....	9	European Starling.....	11
<i>Aotus trivirgatus</i> .....	21	<i>Bos taurus</i> .....	23	Condor, Andean.....	7	<i>Eusmilus sicarius</i> .....	54
<i>Apatosaurus</i> .....	62	Bottlenose Dolphin.....	40	Condor, California.....	7, 10-11	Fairy Armadillo.....	35
Apes.....	14-15, 18-19, 22	<i>Brachyramphus marmoratus</i> .....	11	<i>Conraua goliath</i> .....	49	<i>Falco peregrinus</i> .....	6, 11-13
Apes, Fetal.....	22	<i>Bradypus tridactylus</i> .....	34	<i>Corvus brachyrhynchos</i> .....	7, 9, 11	<i>Falco sparverius</i> .....	7, 11
Apes, Infant.....	22	Brain, Orangutan.....	18	<i>Corvus corax</i> .....	5, 9, 12-13	Falcon, Peregrine.....	6, 11-13
<i>Aptenodytes patagonicus</i> .....	11	Brown Headed Cowbird.....	11	Cotton-top Tamarin.....	21	False Killer Whale.....	43
<i>Apteryx australis</i> .....	4	Brown Kiwi.....	4	Cougar.....	13, 24	<i>Felis catus (Felis domesticus)</i> .....	25, 36
<i>Aquila chrysaetos</i> .....	3, 6, 11-13	<i>Bubo virginianus</i> .....	6, 11-13	Coyote.....	12-13, 26, 36	Femur Comparative Set.....	23
<i>Ara macao</i> .....	8	<i>Bugeranus carunculatus</i> .....	10	Coyote Pathology.....	23	Ferret.....	34
<i>Archilochus colubris</i> .....	7, 10	Bulldog.....	26	Crane.....	9, 10-11	Fetal Apes.....	22
<i>Architeuthis dux</i> .....	46	Burrowing Owl.....	7	Crocodile, American.....	50	Flamingo.....	4
<i>Arctodus simus</i> .....	55	<i>Buteo jamaicensis</i> .....	6-7, 11-13	Crocodile, Dwarf.....	50	Flipper, Dolphin.....	40
<i>Ardea herodias</i> .....	9, 11	Calf, Two-faced.....	23	Crocodile, Nile.....	50	Flipper, Manatee.....	42
<i>Ardeotis kori</i> .....	10-11	California Condor.....	7, 10-11	Crocodile, Saltwater.....	50	Flipper, Seal.....	43
Armadillo, Common.....	35	<i>Callicebus torquatus</i> .....	20	Crocodylians, Fossil.....	57	Florida Manatee.....	42
Armadillo, Fairy.....	35	<i>Callithrix jacchus</i> .....	21	Crocodylians, Modern.....	50-51	Flying Fox.....	32
Armadillo, Fossil.....	62	Canada Goose.....	11	<i>Crocodylus acutus</i> .....	50	Flying Lemur.....	32
Armadillo, Giant Modern.....	35	Canadian Lynx.....	13	<i>Crocodylus niloticus</i> .....	50	Fossil Armadillo.....	62
Asian Elephant.....	38	Canid Claws.....	12-13	<i>Crocodylus porosus</i> .....	50	Fossil Bison.....	61
<i>Asio flammeus</i> .....	7	Canid Skulls.....	26	<i>Crocodylus crocuta</i> .....	26	Fossil Dugong.....	41
<i>Ateles paniscus</i> .....	16	<i>Canis dirus</i> .....	26, 56	Crow.....	7, 9, 11	Fossil Giant Beaver.....	56
<i>Athene cunicularia</i> .....	7	<i>Canis familiaris</i> .....	26	Cuckoo.....	9	Fossil Skeletons.....	52, 54-55, 64-65
Atlantic Bottlenose Dolphin.....	40	<i>Canis latrans</i> .....	12-13, 23, 26, 36	<i>Cyanocitta cristata</i> .....	9, 11	Fox, Gray.....	12-13, 26, 36
Australian Mammals.....	33	<i>Canis lupus</i> .....	12-13, 26	<i>Cynocephalus volans</i> .....	32	Fox, Greater Flying.....	32
Aye-Aye.....	21	<i>Canis lupus baileyi</i> .....	26	Cynodont.....	57	<i>Fratercula corniculata</i> .....	8, 11
Babirusa.....	29	<i>Canis rufus</i> .....	26	<i>Dalatias licha</i> .....	45	French Bulldog.....	26
Baboon, Chacma.....	20	<i>Capra hircus</i> .....	23	<i>Dasyypus novemcinctus</i> .....	35, 45	Frog.....	49
Baboon, Mandrill.....	15, 20	Capuchin.....	16	<i>Daubentonia madagascariensis</i> .....	21	Fruit Bat.....	33
Baboon Pathology.....	23	Capybara.....	35	Deer.....	23, 31, 34, 37	Gaboon Viper.....	49
<i>Babyrousa babyrussa</i> .....	29	<i>Carcharhinus plumbeus</i> .....	45	Deer Pathology.....	23	Galapagos Tortoise.....	48
Baculum, Cave Bear.....	27	<i>Carcharocles megalodon</i> .....	58-59	Deer, Chinese Water.....	31	<i>Galeocercdo cuvier</i> .....	46
Baculum, Walrus.....	44	<i>Carcharodon carcharias</i> .....	45, 47	Deer, White-tailed, Doe.....	34, 37	<i>Gallinago gallinago</i> .....	9
Badger.....	12-13	Cardinal.....	7, 9, 11	<i>Dendroaspis polylepis</i> .....	49	Ganges River Dolphin.....	43
Bald Eagle.....	2, 6, 11-13	<i>Cardinalis cardinalis</i> .....	7, 9, 11	<i>Desmodus rotundus</i> .....	34	Gavial.....	51
Barn Owl.....	6, 11-13	<i>Caretta caretta</i> .....	48	<i>Dicerorhinus sumatrensis</i> .....	38	<i>Gavialis gangeticus</i> .....	51
Barred Owl.....	7	Cassowary.....	4	<i>Diceros bicornis</i> .....	38	<i>Gavialosuchus americanus</i> .....	57
<i>Bassariscus astutus</i> .....	36	<i>Castor canadensis</i> .....	12-13, 36	<i>Dinictis felina</i> .....	53	<i>Geochelone gigantea</i> .....	48
Bat Ray.....	45	<i>Castoroides ohioensis</i> .....	56	<i>Dinocrocuta gigantea</i> .....	56	<i>Geochelone nigra</i> .....	48
Bat, Cave Myotis.....	4	<i>Casuarius casuarius</i> .....	4	Dinosaurs.....	62-63	<i>Geococcyx californianus</i> .....	10
Bat, Flying Fox.....	32	Cat Claws.....	13	<i>Diplodocus</i> .....	62	Giant Anteater.....	12-13, 35



Giant Fossil Hyena	56	Jack Rabbit	36	Mexican Wolf	26	Parson's Chameleon	48
Giant Modern Armadillo	35	Jaguar	13, 24	<i>Microcebus murinus</i>	21	Pathology	23
Giant Panda	31	Javan Rhinoceros	38	<i>Miopithecus talapoin</i>	20	<i>Pelecanus erythrorhynchos</i>	8
Giant Sloth	61	Javelina	37	Mockingbird	11	Pelican	8
Giant Squid	46	Kangaroo	33	<i>Moloch horridus</i>	49	Penguin, King	11
Gibbon	18-19	Kestrel, American	7, 11	Moloch Life Cast	49	Penguin, Magellanic	9
Gila Monster	49	Killdeer	11	Monkey	15-17, 20-21, 23	Peregrine Falcon	6, 11-13
<i>Giraffa camelopardalis</i>	28	Killer Whale	43	Monkey, Black Spider	16	<i>Phacochoerus aethiopicus</i>	29
Giraffe	28	King Cobra	49	Monkey, Capuchin	16	<i>Phascalartos cinereus</i>	33
Glaucous Gull	10	King Penguin	11	Monkey, Howler	20	<i>Phoca vitulina</i>	43
Goat Pathology	23	Kitefin Shark	45	Monkey, Owl	21	<i>Phocoena phocoena</i>	43
Golden Eagle	3, 6, 11-13	Kiwi Egg	4	Monkey, Rhesus	17	<i>Phoebastria nigripes</i>	3
Goliath Frog	49	Koala	3	Monkey, Saki	21	<i>Phoenicopterus ruber</i>	4
Goodall, Jane	22	Kodiak Grizzly Bear	27	Monkey, Squirrel	20	<i>Physeter catodon</i>	43
Goose	11	Komodo Dragon	12-13, 48	Monkey, Talapoin	20	<i>Physeter macrocephalus</i>	62
Gorilla	14, 18-19, 22	Kori Bustard	10-11	Monkey, Titi	20	<i>Pica nuttalli</i>	9
<i>Gorilla gorilla beringei</i>	19	Langur	20	Monkey, Vervet	17	Pika	35
Gorilla, Mountain	19	<i>Larus hyperboreus</i>	10	<i>Monodon monoceros</i>	44	Pileated Woodpecker	7, 9
Gray Catbird	11	<i>Latimeria chalumnae</i>	46	Mosasaur	57	Pitbull	26
Gray Fox	12-13, 26, 36	<i>Lemur catta</i>	21	Mountain Gorilla	19	<i>Pithecia pithecia</i>	21
Great Apes	14-15, 18-19, 22	Lemur, Indri	21-22	Mourning Dove	11	<i>Platanista gangetica</i>	43
Great Blue Heron	9, 11	Lemur, Mouse	21	Mouse Lemur	21	<i>Platycarpus planifrons</i>	57
Great Dane	26	Lemur, Ring-tailed	21	<i>Muntiacus reevesi</i>	31	Platypus	37
Great Egret	11	Lemur, Sifaka	11	Muntjac	31	Polar Bear	12-13, 27
Great Horned Owl	6, 11-13	Leopard, African	13, 24	<i>Mustela nigripes</i>	34	<i>Pongo abelii</i>	14, 18-19
Great White Shark	45, 47	Leopard, Clouded	24	<i>Myliobatis californicus</i>	45	<i>Pongo pygmaeus</i>	18-19, 22
Greater Flying Fox	32	Leopard, Snow	24	<i>Myotis velifer</i>	34	Porcupine	12-13
Griffon Vulture	7	<i>Leopardus pardalis</i>	25	<i>Myrmecophaga tridactyla</i>	12-13, 35	Porpoise	43
Grizzly Bear	12-13, 27	<i>Lepus townsendii</i>	36	Mystery Bone Box	37	Port Jackson Shark	45
<i>Grus canadensis</i>	9	Lesser Panda	31	Narwhal	44	<i>Prionodotes maximus</i>	35
Gull	10	Life Casts	10, 18, 22, 46, 49	Neofelis <i>nebulosa</i>	24	<i>Probainognathus jenseni</i>	57
<i>Gulo gulo</i>	34	Lion, African	13, 24-25	Nile Crocodile	50	<i>Procavia capensis</i>	31
<i>Gymnogyps californianus</i>	7, 10-11	Lion, American	53	Northern Cardinal	7, 9, 11	<i>Procyon lotor</i>	12-13, 36
<i>Gyps fulvus</i>	7	Lion, Cave	53	Northern Flicker	11	<i>Propithecus verreauxi</i>	21
<i>Haliaeetus leucocephalus</i>	2, 6, 11-13	Loggerhead Sea Turtle	48	Northern Mockingbird	11	<i>Pseudorca crassidens</i>	43
Hanuman Langur	20	Loon	11	<i>Nycticebus coucang</i>	21	<i>Pteropus poliocephalus</i>	33
Harbor Porpoise	43	<i>Loris tardigradus</i>	21	Ocelot	25	<i>Pteropus vampyrus</i>	32
Harbor Seal	43	Loris, Slender	21	<i>Ochotona collaris</i>	35	Puffin	8, 11
<i>Harpia harpyja</i>	2, 6-7, 10, 12-13	Loris, Slow	21	<i>Odobenus rosmarus</i>	44	<i>Puma concolor</i>	13, 24
Harpy Eagle	2, 6-7, 10, 12-13	<i>Loxodonta africana</i>	38	<i>Odocoileus virginianus</i>	23, 34, 37	Pygmy Hippopotamus	39
Hawk, Red-tailed	6-7, 11-13	<i>Loxodonta africana</i>	38	<i>Odontopteryx gigas</i>	65	Pygmy Marmoset	21
<i>Helicoprion bessonowi</i>	59	<i>Lynx canadensis</i>	13	Okapi	29	Python	49
<i>Heloderma suspectum</i>	49	<i>Lynx lynx</i>	13	<i>Okapia johnstoni</i>	29	<i>Python reticulatus</i>	49
<i>Heptanchias perlo</i>	45	<i>Lynx rufus</i>	13, 25, 36	<i>Ophiophagus hannah</i>	49	Rabbit	34, 36
Heron	9, 11	Lynx, Canadian	13	Orangutan	14, 18-19, 22	Raccoon	12-13, 36
<i>Heterodontus portusjacksoni</i>	45	Lynx, Russian	13	<i>Orcinus orca</i>	43	<i>Ramphastos toco</i>	8
<i>Heterodontus zebra</i>	45	<i>Macaca mulatta</i>	17	Ordering	D	Raptors	6, 12-13
Hippopotamus	39	Macaw	8, 10	<i>Ornithorhynchus anatinus</i>	33	Raven	5, 9, 12-13
<i>Hippopotamus amphibius</i>	39	<i>Machairodus giganteus</i>	54	<i>Orycteropus afer</i>	32	Red Kangaroo	33
<i>Holmesina floridanus</i>	62	<i>Macrochelys temminckii</i>	12-13, 48	Osprey	7, 11	Red Panda	31
<i>Homo sapiens</i>	18	<i>Macropus rufus</i>	33	<i>Osteolaemus tetraspis</i>	50	Red Wolf	26
<i>Homotherium cf. crenatidens</i>	54	Magellanic Penguin	9	Ostrich	10	Red-tailed Hawk	6-7, 11-13
<i>Hoplophonus occidentalis</i>	54	Magpie	9	Otter, Sea	43	Rhesus Macaque	17
Horn, Rhino	38	Mallard Duck	11	Owl Monkey	21	<i>Rhina ancylostoma</i>	45
Hornbill	8	Mammoth, Columbian	60	Owl	6-7, 11-13	<i>Rhinocodon typus</i>	46
Horned Puffin	8, 11	Mammoth, Woolly	56, 60	Owl, Barn	6, 11-13	<i>Rhinoceros sondaicus</i>	38
Horse	30	<i>Mammuthus americanum</i>	60	Owl, Barred	7	Rhinoceros, Black	38
House Finch	11	<i>Mammuthus columbi</i>	60	Owl, Burrowing	7	Rhinoceros, Javan	38
House Wren	11	<i>Mammuthus primigenius</i>	56, 60	Owl, Eastern Screech	11	Rhinoceros, Sumatran	38
Howler Monkey	20	Manatee	42	Owl, Great Horned	6, 11-13	Rhinoceros, White	38
Human	18	Mandrill Baboon	15, 20	Owl, Short-eared	7	Right Whale	43
Hummingbird	7, 10	<i>Mandrillus sphinx</i>	15, 20	Owl, Snowy	11	Ringtail	36
Humpback Whale	44	Maned Wolf	26	<i>Pan paniscus</i>	15, 18-19	Ring-tailed Lemur	21
Hyacinth Macaw	8, 10	Marbled Murrelet	11	<i>Pan troglodytes</i>	E, 14, 18-19, 22	Roadrunner	10
<i>Hydrochoerus hydrochaeris</i>	35	Marine Mammals	40-44	Panda, Giant	31	Robin	9, 11
<i>Hydropotes inermis</i>	31	Marmoset, Common	21	Panda, Lesser (Red)	31	Rock Dove	11
Hyena, Giant Fossil	56	Marmoset, Pygmy	21	<i>Pandion haliaetus</i>	7, 11	Rock Hyrax	31
Hyena, Spotted	26	Mastodon	60	<i>Panthera atrox</i>	53	Rock Rabbit	35
<i>Hylobates lar</i>	18-19	Meadowlark	11	<i>Panthera leo</i>	13, 24-25	Roseate Spoonbill	8
Hyoid, Horse	30	Meerkat	31	<i>Panthera onca</i>	13, 24	Ruby-throated Hummingbird	7, 10
Hyoid, Howler Monkey	20	Megalodon Shark	58-59	<i>Panthera pardus</i>	13, 24	Russian Lynx	13
Hyrax	31	<i>Megantereon cultridens</i>	54	<i>Panthera spelaea</i>	53	Sabers, Sabercat	52-54
Ibis	9	<i>Megantereon nihowanensis</i>	54	<i>Panthera tigris</i>	13, 24-25	Sabertooth Cat, <i>Dinictis</i>	53
Indri Lemur	21-22	<i>Megaptera novaeangliae</i>	44	<i>Panthera tigris</i>	13, 24-25	Sabertooth Cat, <i>Eusmilus</i>	53
Infant Apes	22	<i>Melursus ursinus</i>	12-13	<i>Panthera zdanskyi</i>	54	Sabertooth Cat, <i>Homotherium</i>	54
<i>Isurus oxyrinchus</i>	45	<i>Mephitis mephitis</i>	36	<i>Papio ursinus</i>	20	Sabertooth Cat, <i>Hoplophonus</i>	54
		<i>Metaxytherium floridanum</i>	41	Parrot	8, 10		

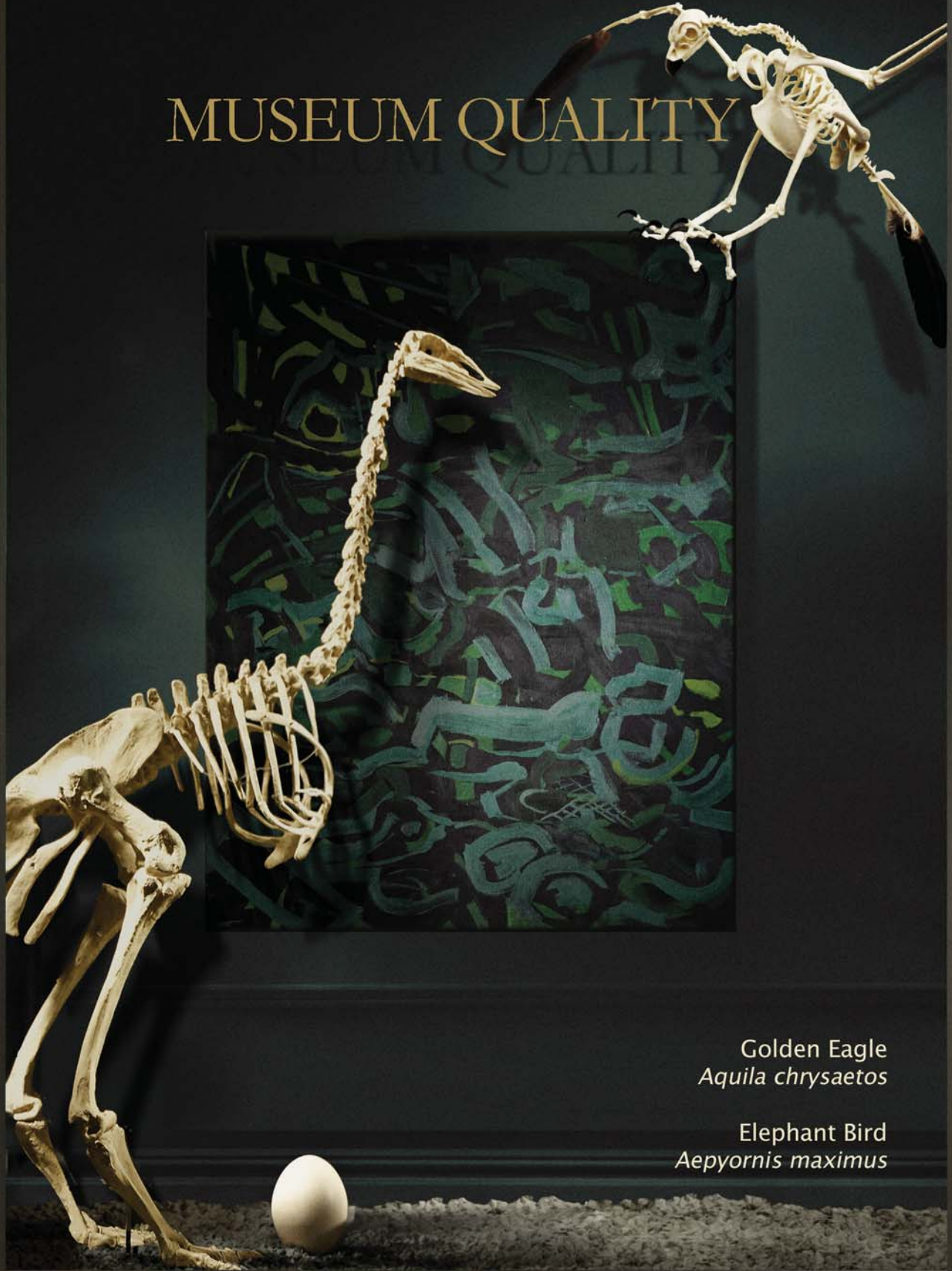
Sabertooth Cat, <i>Machairodus</i> .....	54	Skeleton, <i>Smilodon</i> .....	52	Tasmanian Devil .....	33	<i>Tyrannosaurus rex</i> .....	62-63
Sabertooth Cat, <i>Megantereon</i> .....	54	Skeleton, Vervet Monkey .....	17	Tasmanian Wolf .....	33	<i>Tyto alba</i> .....	6, 11-13
Sabertooth Cat, <i>Smilodon</i> .....	52-53	Skeleton, Weeping Capuchin .....	16	<i>Taxidea taxus</i> .....	12-13	<i>Uncia uncia</i> .....	24
Sabertooth Cat, South American .....	53	Skeleton, <i>Xenosmilus</i> .....	54	<i>Tayassu tajacu</i> .....	37	<i>Urocyon cinereoargenteus</i> .....	12-13, 26, 36
Sabertooth Cat, <i>Xenosmilus</i> .....	54	Skulls, Bear.....	27	Terrier .....	26	<i>Ursus americanus</i> .....	12-13, 27, 37
Sacred Ibis .....	9	Skulls, Bird.....	2-10	<i>Thalassarche melanophris</i> .....	8	<i>Ursus arctos</i> .....	12-13, 27
<i>Sagittarius serpentarius</i> .....	7	Skulls, Canid.....	26	<i>Thoosuchus</i> .....	57	<i>Ursus maritimus</i> .....	12-13, 27
<i>Saguinus oedipus</i> .....	21	Skulls, Cat.....	24-25	Three-toed Sloth.....	34	<i>Ursus spelaeus</i> .....	27
<i>Saimiri sciureus</i> .....	20	Skulls, Crocodylian.....	50-51	<i>Threskiornis aethiopicus</i> .....	9	Vampire Bat.....	34
Saki Monkey.....	21	Skulls, Economy.....	36-37	<i>Thylacinus cynocephalus</i> .....	33	<i>Varanus komodoensis</i> .....	12-13, 48
Salamander.....	49	Skulls, Primate.....	16-22	Tiger Shark.....	46	Vertebral Disk.....	44
Saltwater Crocodile.....	50	Skunk .....	36	Tiger, Ancestral.....	54	Vervet Monkey .....	17
Saluki.....	26	Slender Loris.....	21	Tiger, Bengal.....	25	Viper.....	49
Sandbar Shark.....	45	Sloth Bear.....	12-13	Tiger, Siberian.....	13, 24	<i>Vombatus ursinus</i> .....	33
Sandhill Crane .....	9	Sloth, Giant .....	61	<i>Tiliqua rugosa</i> .....	49	<i>Vultur gryphus</i> .....	7
<i>Sarcophilus harrisi</i> .....	33	Sloth, Three-toed .....	34	Titi Monkey.....	20	Vulture, Griffon .....	7
<i>Sarcosuchus imperator</i> .....	57	Sloth, Two-toed.....	12-13, 34	Toco Toucan.....	8	Vulture, Turkey.....	11
Scarlet Ibis .....	9	Slow Loris .....	21	Tooth, Alligator .....	51	Walrus.....	44
Scarlet Macaw.....	8	<i>Smilodon fatalis (californicus)</i> .....	52-53	Tooth, Cave Bear .....	27	Warhog.....	29
Scrub-Jay .....	11	<i>Smilodon populator</i> .....	53	Tooth, Crocodile.....	50	Wattled Crane.....	10
Sculpture.....	66	Snakes.....	49	Tooth, Elephant.....	38	Weeping Capuchin .....	16
Sea Otter.....	43	Snipe.....	9	Tooth, Hippopotamus.....	39	Western Meadowlark.....	11
Seal, Harbor .....	43	Snow Leopard.....	24	Tooth, Leopard.....	24	Western Scrub-Jay .....	11
Secretary Bird.....	7	Snowy Owl .....	11	Tooth, Lion.....	24	Whale Pelvis.....	43
<i>Semnopithecus entellus</i> .....	20	<i>Solenodon cubanus</i> .....	35	Tooth, Mammoth.....	60	Whale Shark.....	46
Sets, Bird Skull, Egg, Talon .....	6	<i>Solenodon paradoxus</i> .....	35	Tooth, Mastodon.....	60	Whale Vertebra.....	44
Sets, Bird Skulls .....	7	<i>Solenodon, Cuban</i> .....	35	Tooth, Megalodon.....	59	Whale, Humpback.....	44
Sets, Claw & Talon.....	6, 13	<i>Solenodon, Haitian</i> .....	35	Tooth, Sabercat.....	52-54	Whale, Killer.....	43
Sets, Comparison Economy.....	37	Sperm Whale, Fossil .....	62	Tooth, Sarcosuchus .....	57	Whale, Narwhal .....	44
Sets, Egg .....	11	Sperm Whale, Modern.....	43	Tooth, Shark.....	47, 59	Whale, Right.....	43
Sets, Femur Comparison .....	23	<i>Spheniscus magellanicus</i> .....	9	Tooth, Short-faced Bear .....	55	Whale, Sperm (fossil).....	62
Sets, Shark Teeth.....	47, 59	<i>Sphenodon punctatus</i> .....	48	Tooth, Tiger .....	24	Whale, Sperm (modern).....	43
Sets, Small Primate .....	21	Spoonbill.....	8	Tooth, T-rex.....	62	Whip-poor-will.....	11
Shark Jaws.....	45-47	Spotted Hyena .....	26	Tooth, Whale .....	43, 62	White Bull Terrier.....	26
Shark Ray.....	45	Squid.....	46	Tooth, Whorl Tooth.....	59	White Rhinoceros .....	38
Shark, Megalodon.....	58-59	Squirrel Monkey.....	20	Tortoise, Aldabra .....	48	White-handed Gibbon .....	18-19
Shark, Whorl Tooth.....	59	St. Bernard .....	26	Tortoise, Galapagos .....	48	White-tailed Deer .....	34, 37
Sharpnose Sevengill Shark .....	45	Starling .....	11	Toucan .....	8	Whooping Crane.....	11
Shingleback.....	49	<i>Stegosaurus unguatus</i> .....	62	Tree Shrew .....	32	Whorl Tooth Shark.....	59
Short-eared Owl.....	7	<i>Stegostoma fasciatum</i> .....	45	<i>Trichechus manatus</i> .....	42	Wild Eastern Turkey .....	11
Short-faced Bear.....	55	Stingray .....	45-46	Tuatara.....	48	Wolf, Dire.....	26, 56
Shortfin Mako Shark.....	45	<i>Strix varia</i> .....	7	<i>Tupaia glis</i> .....	32	Wolf, Maned.....	26
Shrew, Elephant.....	32	<i>Struthio camelus</i> .....	10	<i>Turdus migratorius</i> .....	9, 11	Wolf, Mexican.....	26
Shrew, Tree .....	32	Sumatran Orangutan.....	18-19	Turkey.....	11	Wolf, Red.....	26
Siamang.....	15, 19	Sumatran Rhinoceros .....	38	Turkey Vulture.....	11	Wolf, Siberian.....	26
Siberian Tiger.....	13, 24	<i>Suricata suricatta</i> .....	31	<i>Tursiops truncatus</i> .....	40	Wolf, Tasmanian .....	33
Siberian Wolf.....	26	<i>Symphalangus syndactylus</i> .....	15, 19	Turtle, Alligator Snapping.....	12-13, 48	Wolverine .....	34
Sifaka Lemur.....	21	<i>Tachyglossus aculeatus</i> .....	33	Turtle, Loggerhead .....	48	Wombat .....	33
Skeleton, Bald Eagle .....	2	Tail Spine, Stingray .....	46	Tusk, Babirusa .....	29	Woodpecker.....	7, 9
Skeleton, Black Spider Monkey .....	16	Talopin Monkey.....	20	Tusk, Hippopotamus .....	39	Woolly Mammoth.....	56, 60
Skeleton, Black-footed Albatross .....	3	Talons .....	5-6, 12-13	Tusk, Narwhal .....	44	Wreathed Hornbill.....	8
Skeleton, Bonobo .....	15	Tamarin.....	21	Tusk, Walrus .....	44	<i>Xenosmilus hodsonae</i> .....	54
Skeleton, Brown Kiwi .....	4	Tambaqui.....	46	Tusk, Warhog.....	29	Yellow-billed Cuckoo.....	9
Skeleton, Chimpanzee .....	14	<i>Tarbosaurus bataar</i> .....	62	Tusk, Woolly Mammoth.....	56	Yellow-billed Magpie.....	9
Skeleton, Dolphin .....	40	Tarsier .....	21	Two-faced Calf .....	23	Zebra Bullhead Shark.....	45
Skeleton, Elephant Bird .....	64	<i>Tarsius syrichta</i> .....	21	Two-toed Sloth.....	12-13, 34	Zebra Shark.....	45
Skeleton, Flying Lemur .....	32						
Skeleton, Fossil Dugong.....	41						
Skeleton, Golden Eagle.....	3						
Skeleton, Goliath Frog .....	49						
Skeleton, Gorilla .....	14						
Skeleton, Greater Flying Fox.....	32						
Skeleton, Harpy Eagle.....	2						
Skeleton, Horse .....	30						
Skeleton, Indri Lemur.....	22						
Skeleton, Komodo Dragon .....	48						
Skeleton, Manatee .....	42						
Skeleton, Mandrill Baboon .....	15						
Skeleton, <i>Odontopteryx gigas</i> .....	65						
Skeleton, Orangutan .....	14						
Skeleton, Platypus.....	33						
Skeleton, Raven.....	5						
Skeleton, Rhesus Macaque .....	17						
Skeleton, Short-faced Bear.....	55						
Skeleton, Siamang.....	15						



Illustration ©Sabrina Silver



MUSEUM QUALITY



Golden Eagle  
*Aquila chrysaetos*

Elephant Bird  
*Aepyornis maximus*

\$8.95

[www.boneclones.com](http://www.boneclones.com)

Made in the U.S.A.